

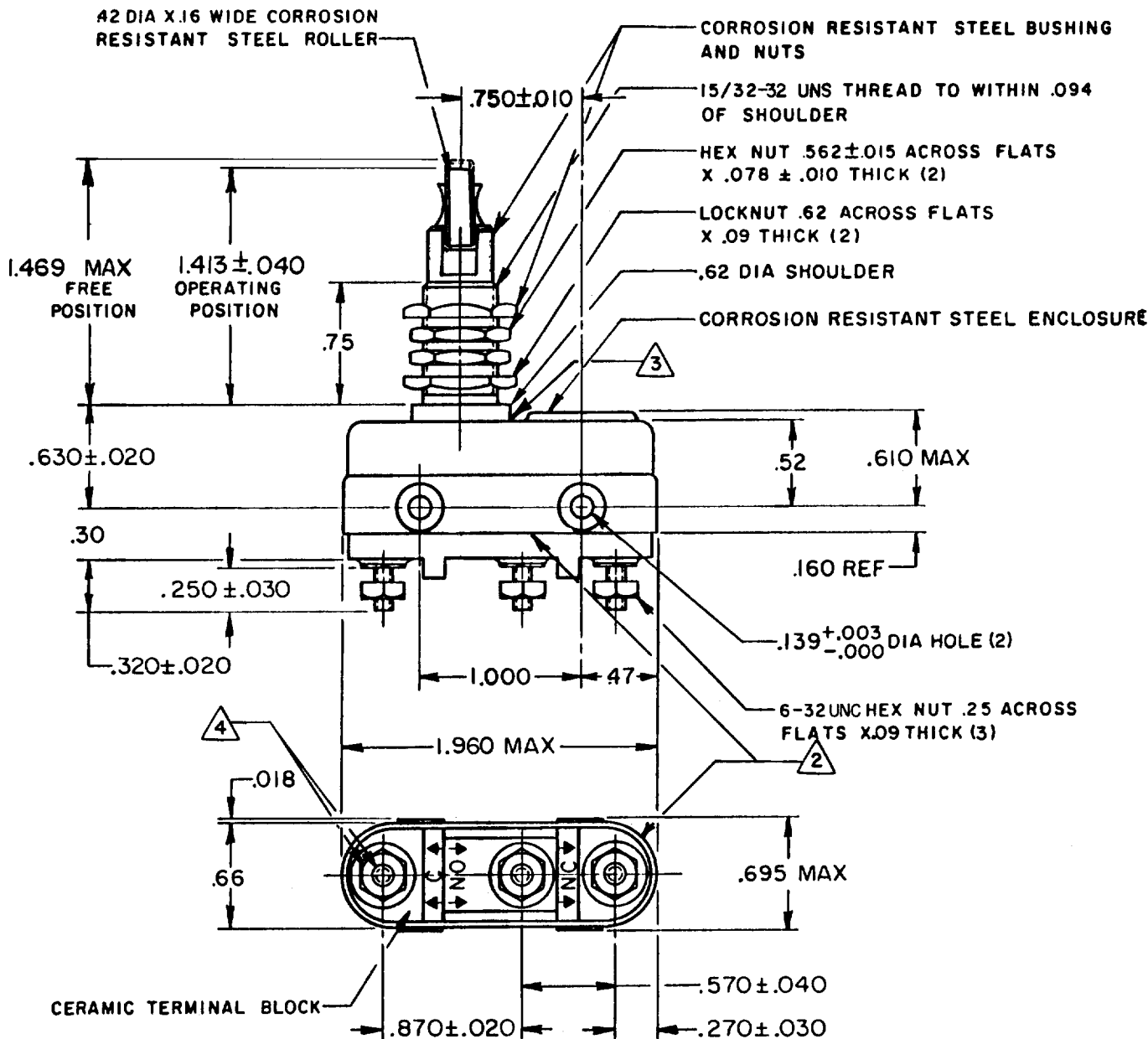
# MICRO SWITCH

FREERPORT ILLINOIS, U.S.A  
A DIVISION OF HONEYWELL  
FED. MFG. CODE 91929

# SWITCH - BASIC

CATALOG LISTING  
**3HT85**

CATALOG LISTING  
**3HT85**  
PAGE 1 OF 1  
RELEASE NO. PR-8065  
REPLACES  
DRAWING NUMBER  
**M**  
ISSUE  
**4**  
CHECK  
REVISIONS  
**A** CO 53398  
S L 21 JUN 83  
**B** CO 54474  
D J S 3 FEB 84  
**C** CO-92890  
CSL 7 MAY 98  
CHECK  
DRAWN  
**G J W** 8 AUG 79  
FORMTEK

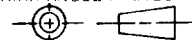


**NOTE-**

- 1-SWITCH WILL WITHSTAND TEMPERATURE OF 1000°F MAX
- △ HOUSING BASE JOINT IS FILLED WITH CA9R
- △ WELDED AND BRAZED JOINT
- △ RECOMENDED APPLIED TORQUE FOR A 6-32 UNC STAINLESS STEEL TERMINAL IS 10 IN LB MAX. EXCEEDING THIS TORQUE COULD DAMAGE THE SWITCH

THIS DRAWING COVERS A PROPRIETARY ITEM AND IS THE PROPERTY OF MICRO SWITCH, A DIVISION OF HONEYWELL. THIS DRAWING IS NOT TO BE COPIED OR USED WITHOUT THE APPROVAL OF MICRO SWITCH.

THIRD ANGLE PROJECTION



**CHARACTERISTICS**

OPERATING FORCE --- 30 OZ MAX

RELEASE FORCE ----- 6 OZ MIN

DIFFERENTIAL TRAVEL ---.010 MAX

OVERTRAVEL ----- .188 MIN

FULL OVERTRAVEL FORCE -- 6 LB APPROX

**ELECTRICAL DATA**

CONTACT ARRANGEMENT  
**S P D T**

L305 3A 1/10HP 125 VAC  
2A 1/6HP 250 VAC



**SCALE FULL**

DO NOT SCALE PRINT

**TOLERANCES**  
APPLY TO DESIGN UNITS. CONVERSIONS ARE ONLY FOR REFERENCE. UNLESS NOTED, TOLERANCES ARE ±

PLACES	DIM. mm	TOL. mm/in	DIM. in	TOL. mm/in
0 PLACES	X	1/64	X X	0.010
1 PLACES	X,X	0.4/016	X X X	0.38/016
2 PLACES	X,XX	0.15/006	X X X X	0.13/005
3 PLACES	X,XXX		X X X X X	

DESIGN UNITS  SI METRIC  US CUSTOMARY

WEIGHT 2.7 OZ MAX