

# MICRO SWITCH

A DIVISION OF MINNEAPOLIS-HONEYWELL REGULATOR COMPANY  
 FREEPORT, ILLINOIS  
 FED. MFR. CODE 91929

# SWITCH - BASIC

CATALOG LISTING  
**3HT2**

(M) 3HT2  
 ISSUE 3

CATALOG LISTING  
**M 3HT2**  
 PAGE 1 OF 1

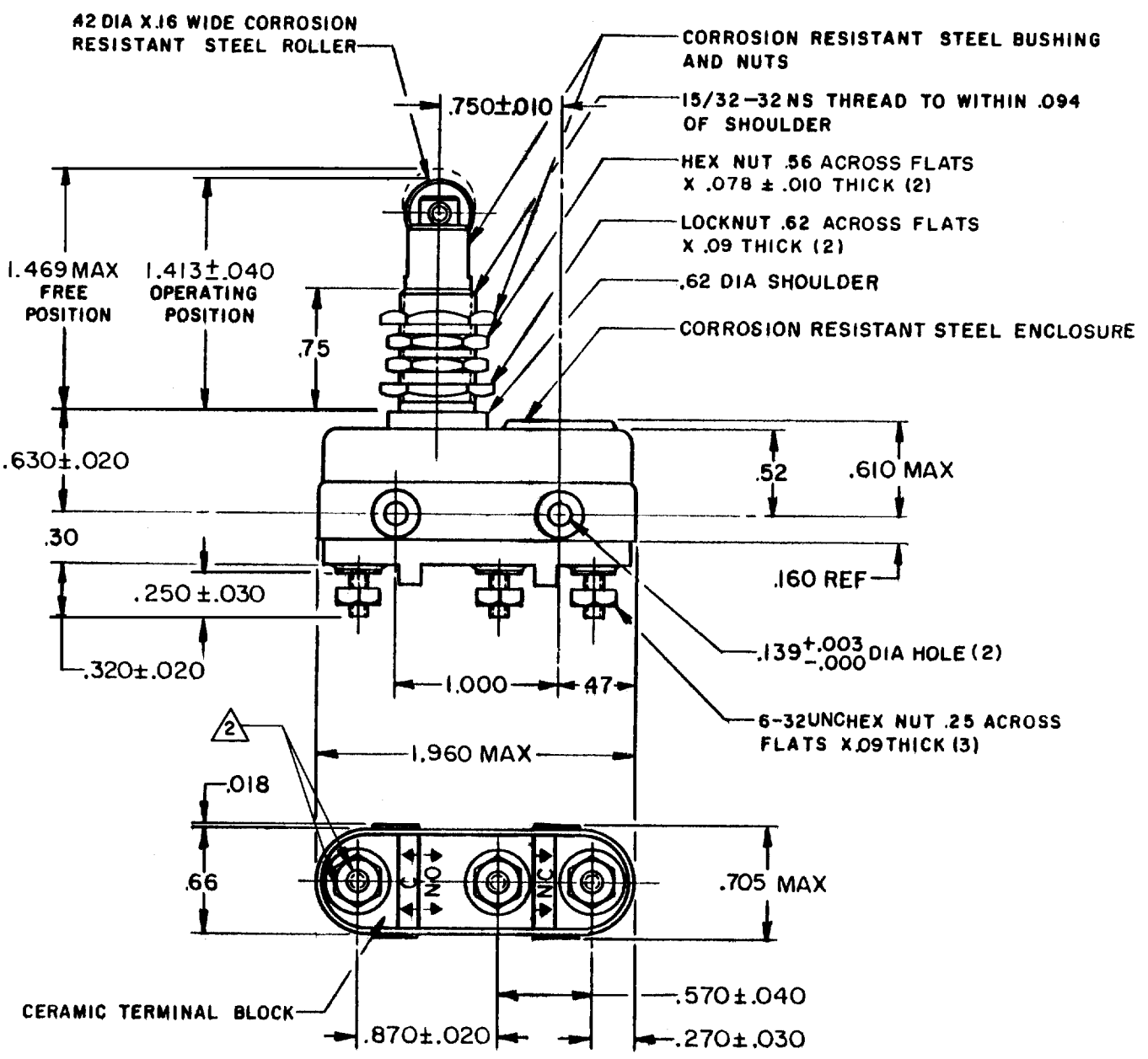
RELEASE NO.  
 DRAWING NUMBER  
**13**

ISSUE

REVISIONS

A	CO16180	RER	5 SEP 61
B	CO16367	RER	24 NOV 61
C	CO18487	LEB	26 SEPT 63
D	CO 21919	OMW	12 APR 67
E	CO29241	RER	28 AUG 71
F	CO32050	RER	17 MAY 73
G	CO 36610	KSW	11 FEB 76
H	53398	CO	
S	L B		
J	CO 54474		
D	J S		
K	CO-92890	CSL	7 MAY 98

FORMTEK  
 DRAWN  
 R E R 5 SEP 61



NOTE -

1 - SWITCH WILL WITHSTAND TEMPERATURE OF 1000°F MAX

2 - RECOMMENDED APPLIED TORQUE FOR A 6-32 UNC STAINLESS STEEL TERMINAL IS 10 IN LB MAX. EXCEEDING THIS TORQUE COULD DAMAGE THE SWITCH

THIS DRAWING COVERS A PROPRIETARY ITEM AND IS THE PROPERTY OF MICRO SWITCH, A DIVISION OF MINNEAPOLIS-HONEYWELL REGULATOR CO. THIS DRAWING IS NOT TO BE COPIED OR USED WITHOUT THE APPROVAL OF MICRO SWITCH.

CHARACTERISTICS	ELECTRICAL DATA	SCALE FULL
OPERATING FORCE - - - - - 30 OZ MAX	CONTACT ARRANGEMENT S P D T	DO NOT SCALE PRINT
RELEASE FORCE - - - - - 6 OZ MIN	L305 3A 1/10HP 125 VAC 2A 1/6HP 250 VAC	UNLESS OTHERWISE SPECIFIED
DIFFERENTIAL TRAVEL - - - - .010 MAX		DIMENSIONS ARE IN INCHES
OVERTRAVEL - - - - - .188 MIN		<b>TOLERANCES ARE:</b>
		ONE PLACE (.0) ±.030
		TWO PLACE (.00) ±.015
		THREE PLACE (.000) ±.005
		ANGLES ±
		WEIGHT 2.6 OZ MAX

