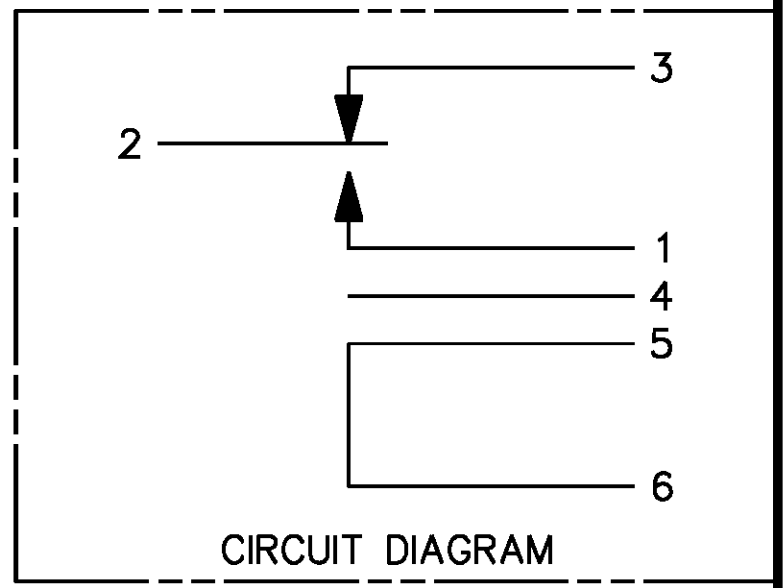
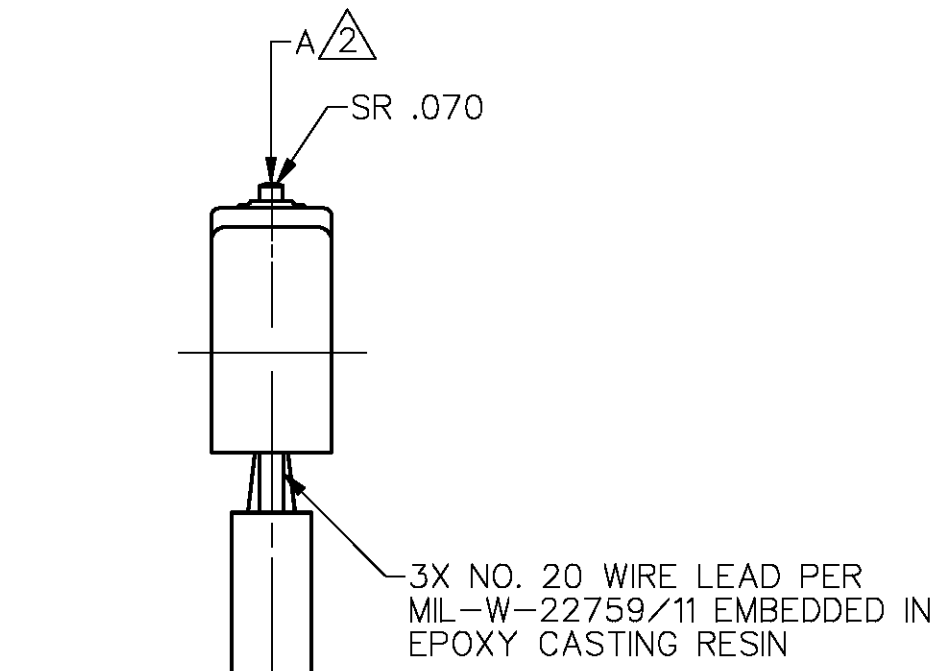
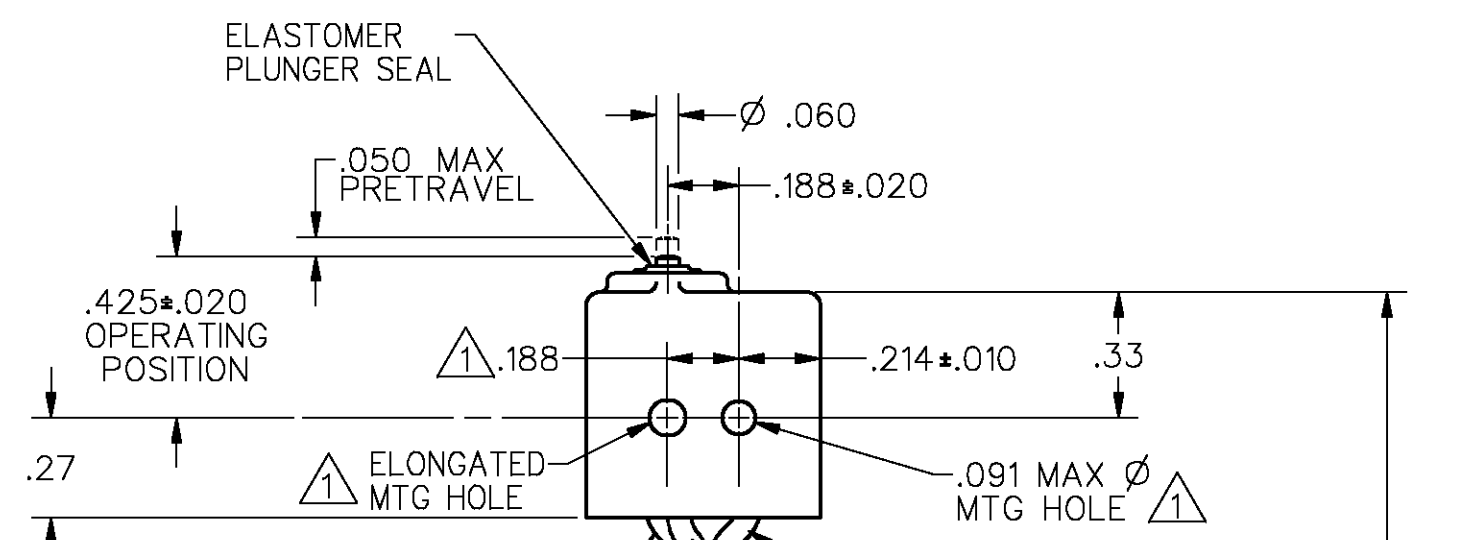
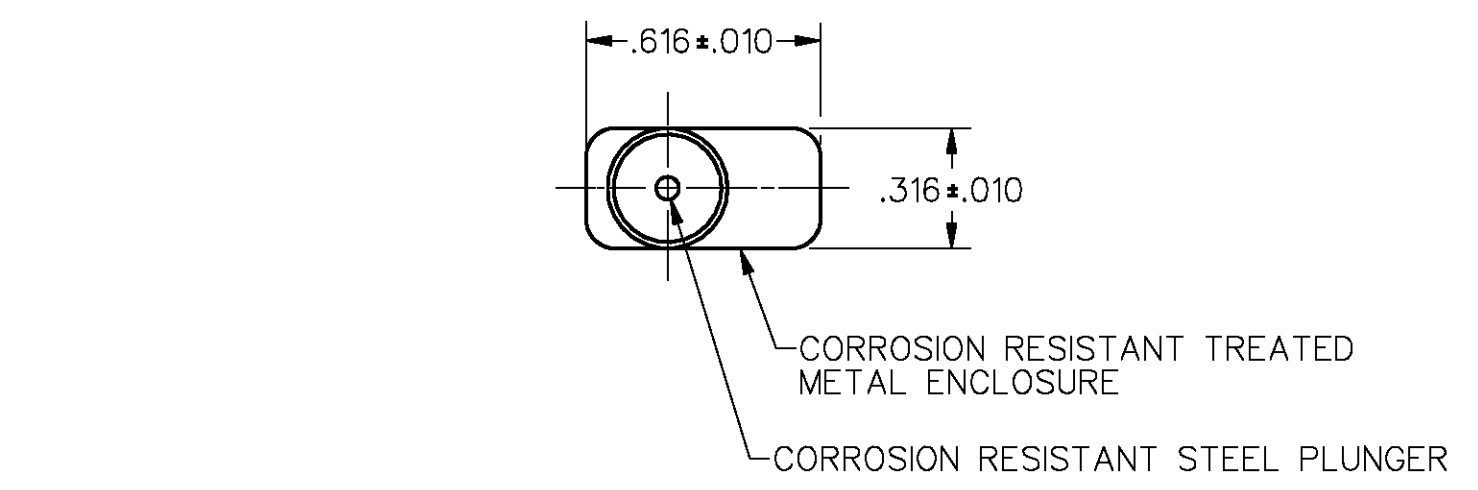


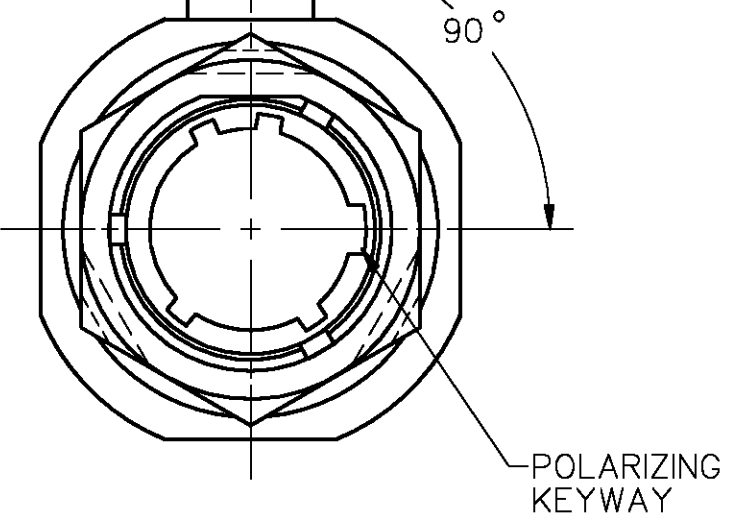
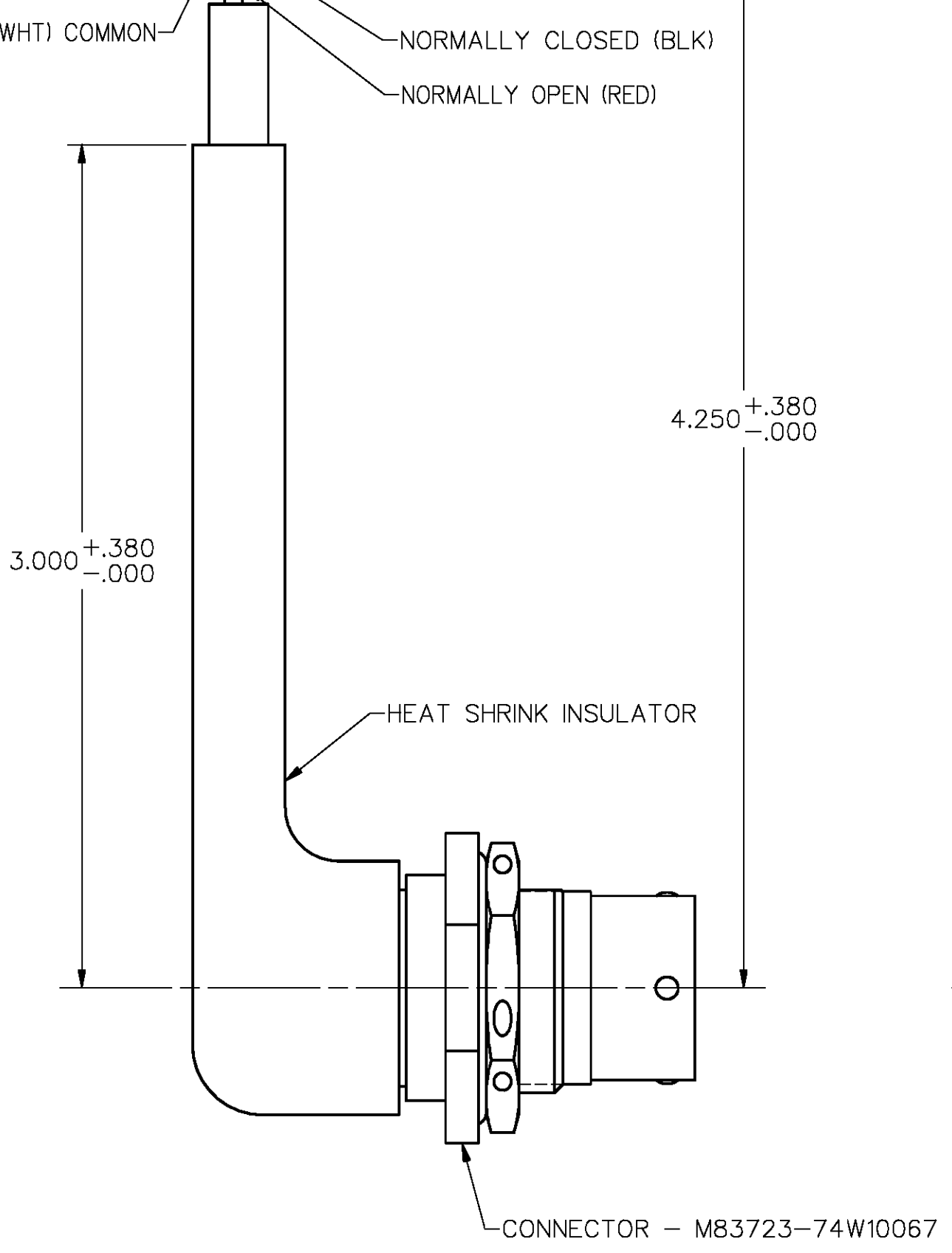
CHARACTERISTICS	
OPERATING FORCE	5-17 OZ
RELEASE FORCE	4 OZ MIN
RELEASE TRAVEL	.004 MIN
DIFFERENTIAL TRAVEL	.005 MAX
OVERTRAVEL	.004 MIN

ELECTRICAL DATA	
CONTACT ARRANGEMENT S P D T	
28 VOLTS DC RATING	
INDUCTIVE	SEA LEVEL-----4 AMP 50,000 FT-----2.5 AMP
RESISTIVE	SEA LEVEL-----7 AMP 50,000 FT-----7 AMP
LAMP	SEA LEVEL-----1 AMP
MOTOR	SEA LEVEL-----2.5 AMP
115 V 400 CYCLES	SEA LEVEL
RESISTIVE	-----7 AMP
INDUCTIVE	-----4 AMP
LAMP	-----1 AMP
MOTOR	-----1.5 AMP



NOTES
 ① MOUNTING HOLES WILL ACCEPT $\phi .087$ MAX PINS OR SCREWS ON $.188 \pm .002$ CENTERS
 ② ACTUATION IN LINE WITH ARROW "A" IS RECOMMENDED

DRAWING NUMBER 39XE96
 ISSUE 5
 PAGE 1 OF 1
 RELEASE NO. PR-19726
 REPLACES
 CHECK
 REVISIONS
 A PR19726
 22 JAN 92
 B 72785
 5 AUG 92
 C 74841
 19 APR 93
 D 94402
 5 MAR 99
 CHECK
 DDM/CAD
 DRAWN
 MAM 22 JAN 92
 CHECK



MASTER REDUCED
 ANSI Y14.5M-1982 APPLIES

THIS DRAWING COVERS A PROPRIETARY ITEM AND IS THE PROPERTY OF MICRO SWITCH, A DIVISION OF HONEYWELL. THIS DRAWING IS NOT TO BE COPIED OR USED WITHOUT THE APPROVAL OF MICRO SWITCH.		THIRD ANGLE PROJECTION
MICRO SWITCH a Honeywell Division		SCALE 2:1
SWITCH AND CONNECTOR ASSEMBLY		DO NOT SCALE PRINT
CATALOG LISTING 39XE96		UNLESS OTHERWISE SPECIFIED TOLERANCES ARE
FED. MFG. CODE 91929		ONE PLACE (.0) $\pm .030$
		TWO PLACES (.00) $\pm .015$
		THREE PLACES (.000) $\pm .005$
		ANGLES \pm
		WEIGHT