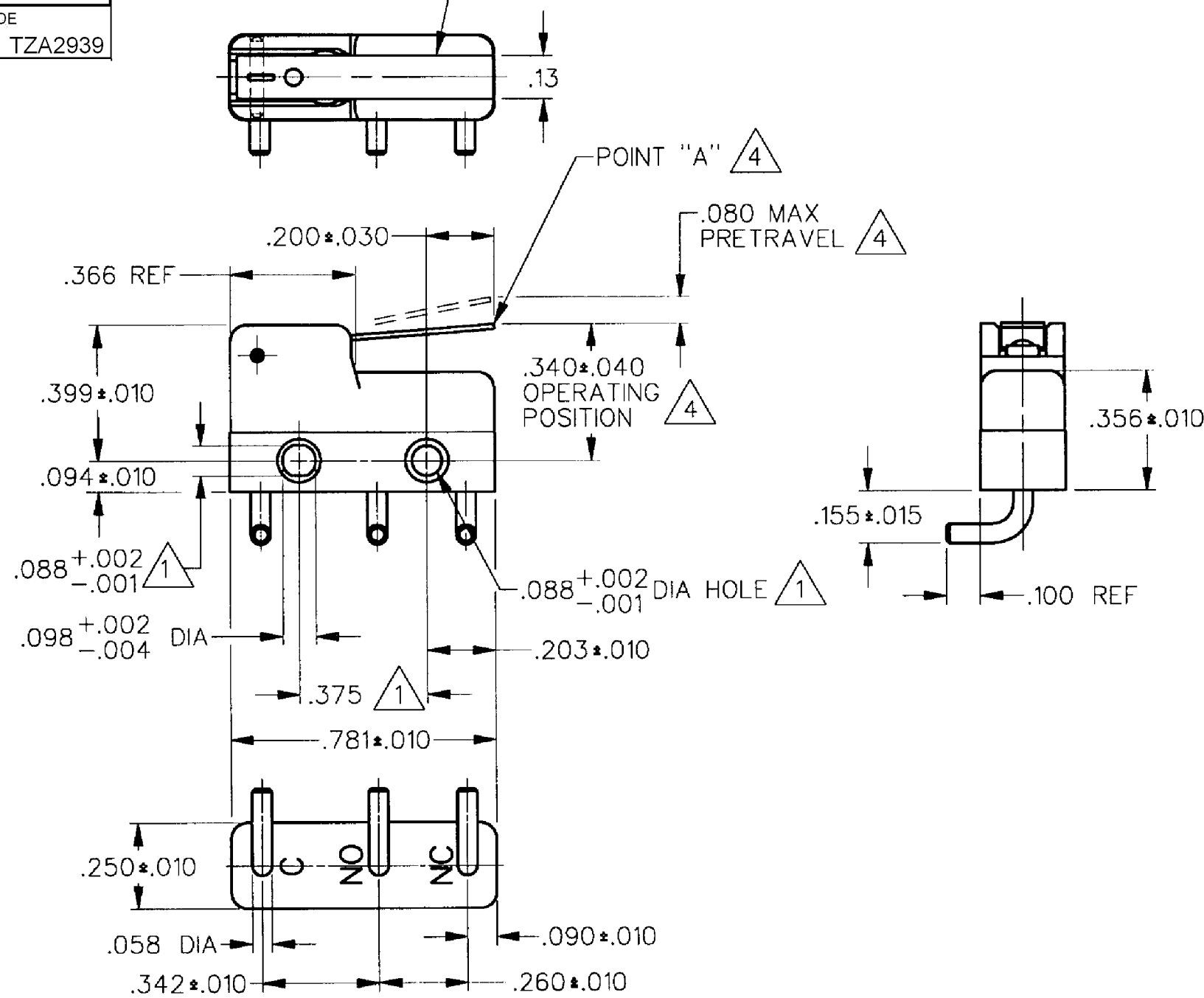


HONEYWELL
PART NUMBER
341SM169-H252
PRODUCT CODE
TZA2939

REV	DOCUMENT	CHANGED BY	CHECK
3	0041782	PK 21JUL08	ASD

CORROSION RESISTANT
STEEL ACTUATOR



- NOTES
- 1 MOUNTING HOLES WILL ACCEPT PINS OR SCREWS OF .087 MAX DIA ON .375 ± .002 CENTERS
 - 2 - TERMINALS ARE PLATED FOR SOLDERING
 - 3 - SWITCH WILL WITHSTAND TEMPERATURE OF 250°F
 - 4 CHARACTERISTICS TAKEN AT POINT "A"

RELEASE NO.	PR - 19095
REPLACES	X93276 - SM

CHARACTERISTICS	4
OPERATING FORCE	45 GRAMS MAX
RELEASE FORCE	7 GRAMS MIN
DIFFERENTIAL TRAVEL	.018 MAX
OVERTRAVEL	.017 MIN

ELECTRICAL DATA	
CONTACT ARRANGEMENT SPDT	
APPROVALS	KEMA, CE 11A 250V ~ T85 1E4 5A 30 Vdc T85 1E4
	UL, CSA 11A 1/4 HP 125 250 VAC 5A 30 VDC
	BRAND L190

DESIGN UNITS: INCH
TOLERANCES UNLESS NOTED:
NO PLACE X ±
ONE PLACE .X ±
TWO PLACE .XX ±
THREE PLACE .XXX ±
FOUR PLACE .XXXX ±
ANGLES ±
THIRD ANGLE PROJECTION

DRAWN	VK	03 DEC 07
CHECK	RJ	03 DEC 07
THIS DRAWING COVERS A PROPRIETARY ITEM AND IS THE PROPERTY OF HONEYWELL. THIS DRAWING IS NOT TO BE COPIED OR USED WITHOUT THE PERMISSION OF HONEYWELL.		
INTERPRET PER ANSI Y14.5M-1982 OTHER HONEYWELL ENGINEERING STANDARDS MAY APPLY		
RASTER		

Honeywell			
TITLE SWITCH - BASIC			
SIZE	TYPE	DRAWING NAME	REV
B	I	341SM169-H252	3
SCALE	-	WEIGHT .006 LB MAX	SHEET 1 OF 1