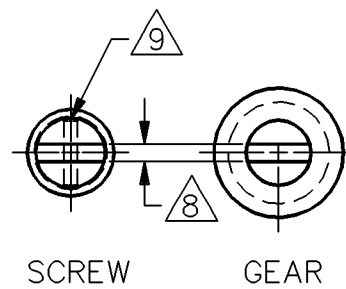
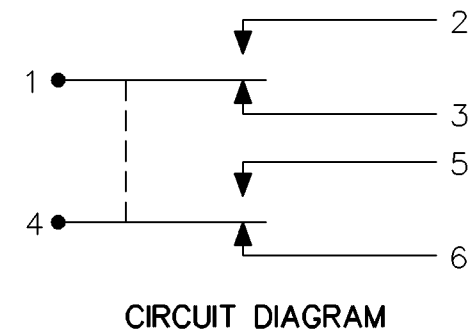


CHARACTERISTICS

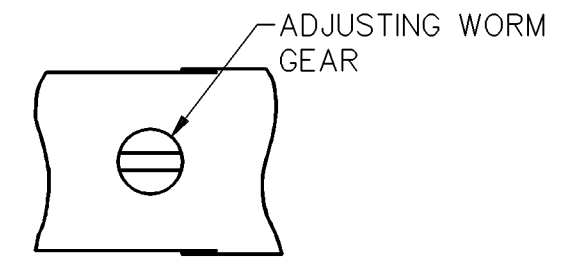


ROLLER LEVER MAY BE ADJUSTED FOR AN INFINITE NUMBER OF POSITIONS THRU 360°. ADJUSTMENT IS MADE BY LOOSENING THE LOCK NUT AND THEN THE SCREW AND TURNING GEAR UNTIL LEVER IS IN DESIRED POSITION. SCREW AND LOCK NUT ON SHAFT IS THEN TIGHTENED TO POSITIVELY LOCK LEVER IN POSITION.

LEVER ADJUSTMENT DETAIL  
SCALE 2:1



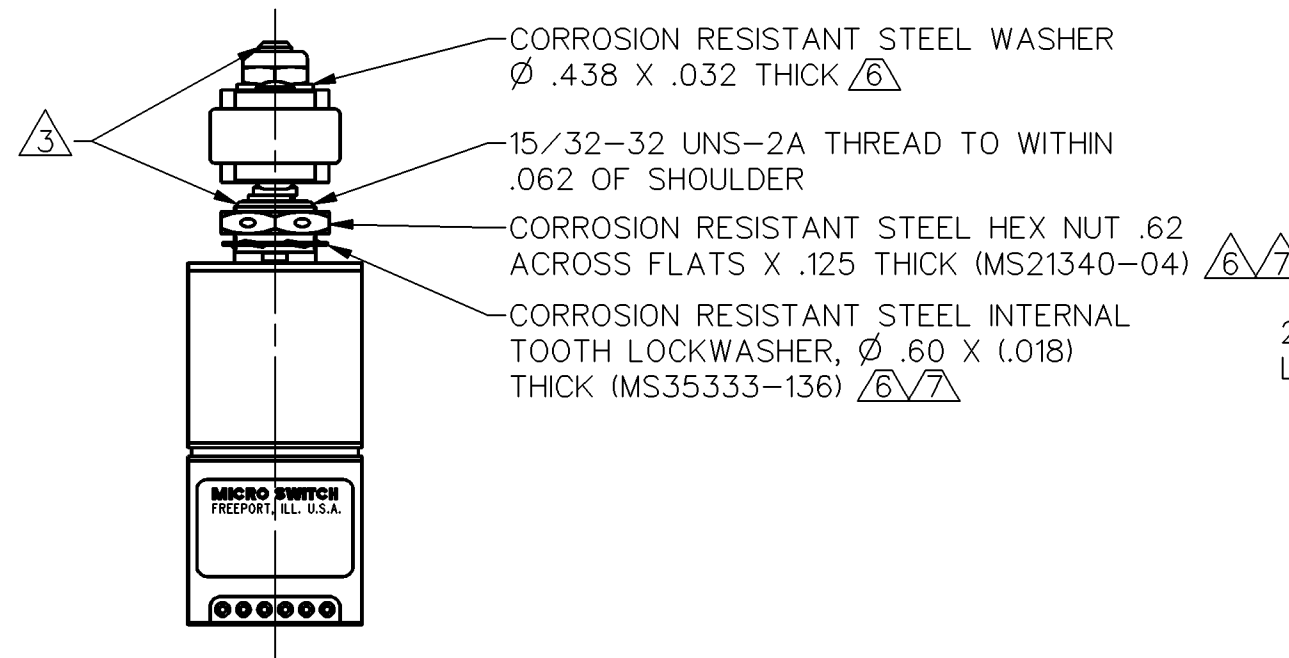
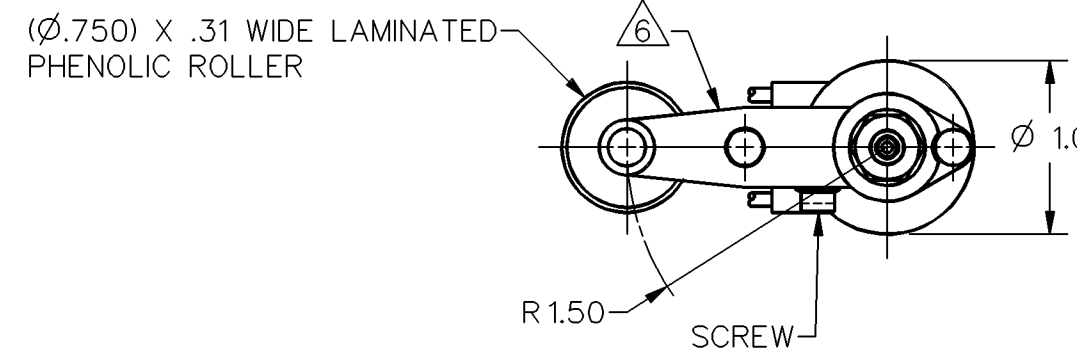
CIRCUIT DIAGRAM



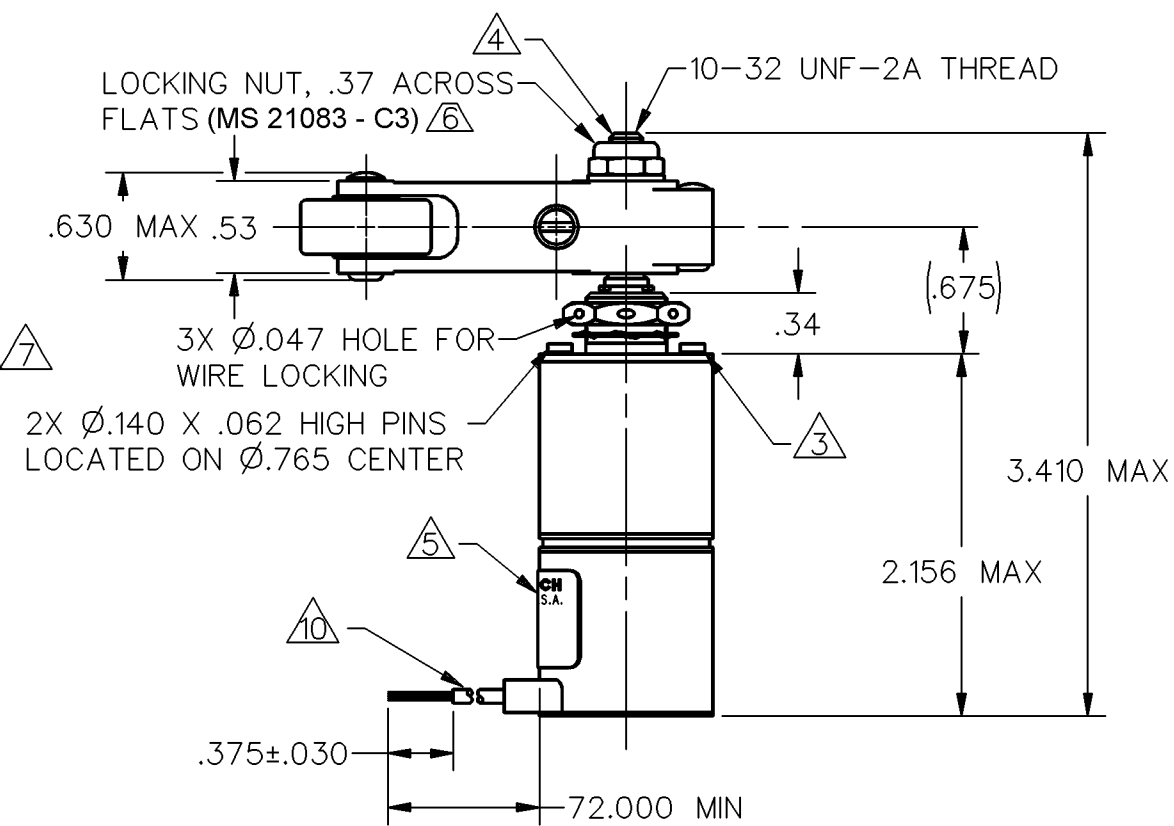
VIEW A-A  
SCALE 2:1

NOTES

- 1 - CORROSION RESISTANT STEEL ENCLOSURE
- 2 - SWITCH SEALED PER MIL-PRF-8805, SYMBOL 4
- 3 CORROSION RESISTANT STEEL SHAFT, BUSHING AND PINS
- 4 DO NOT APPLY MORE THAN 20-25 INCH-POUNDS OF TORQUE WHEN TIGHTENING LOCKING NUT
- 5 CIRCUIT DIAGRAM, CATALOG LISTING AND MILITARY STANDARD NO. MS 21320-2 ARE SHOWN ON NAMEPLATE
- 6 HARDWARE MAY BE PACKAGED UNASSEMBLED PER MIL-PRF-8805
- 7 REPLACEMENT MOUNTING HARDWARE - PACKET 19PA10
- 8 .050 WIDE X .050 DEEP SLOT
- 9 Ø.037 HOLE FOR WIRE LOCKING
- 10 6X NO 20 LEAD WIRE PER MIL-W-22759/7 MARKED WITH CIRCUIT IDENTIFICATION AND WIRE GAUGE (1-20, 2-20 ETC) PER MIL-W-5088



- CORROSION RESISTANT STEEL WASHER Ø .438 X .032 THICK 6
- 15/32-32 UNS-2A THREAD TO WITHIN .062 OF SHOULDER
- CORROSION RESISTANT STEEL HEX NUT .62 ACROSS FLATS X .125 THICK (MS21340-04) 6, 7
- CORROSION RESISTANT STEEL INTERNAL TOOTH LOCKWASHER, Ø .60 X (.018) THICK (MS35333-136) 6, 7



31EN1-6  
 M  
 38  
 REVISIONS  
 A 78965  
 G R T  
 10 JAN 94  
 B 78255  
 MAX  
 31 AUG 94  
 C 0064567  
 PRS  
 18MAY10  
 CHECK T S M 14 JAN 94  
 CHECK CMH 18MAY10  
 CHECK T S M 14 JAN 94  
 RASTER DRAWN  
 G R T 10 JAN 94

CHARACTERISTICS		ELECTRICAL DATA		
OPERATING TORQUE	12-25 IN LB	CONTACT ARRANGEMENT		
RELEASE TORQUE	9 IN LB MIN	2X S P D T (SEE CIRCUIT DIAGRAM)		
PRETRAVEL	SEE DETAIL	28 VDC		
DIFFERENTIAL TRAVEL		LOAD	SEA LEVEL	50,000 FT
OVERTRAVEL		RES	5	5
FREE POSITION		IND	3	2
FULL OVERTRAVEL TORQUE		MOTOR	4	
				40 IN LB MAX

MASTER REDUCED  
ANSI Y14.5M-1982 APPLIES

THIS DRAWING COVERS A PROPRIETARY ITEM AND IS THE PROPERTY OF MICRO SWITCH, A DIVISION OF HONEYWELL. THIS DRAWING IS NOT TO BE COPIED OR USED WITHOUT THE APPROVAL OF MICRO SWITCH.

**MICRO SWITCH**  
a Honeywell Division

SWITCH-ENCLOSED

CATALOG LISTING  
**31EN1-6**  
MILITARY STD PART NUMBER  
MS21320-2

THIRD ANGLE PROJECTION

SCALE FULL

DO NOT SCALE PRINT

UNLESS OTHERWISE SPECIFIED TOLERANCES ARE

ONE PLACE	(.0)	±.030
TWO PLACES	(.00)	±.015
THREE PLACES	(.000)	±.005
ANGLES		±

WEIGHT 9.5 OZ MAX