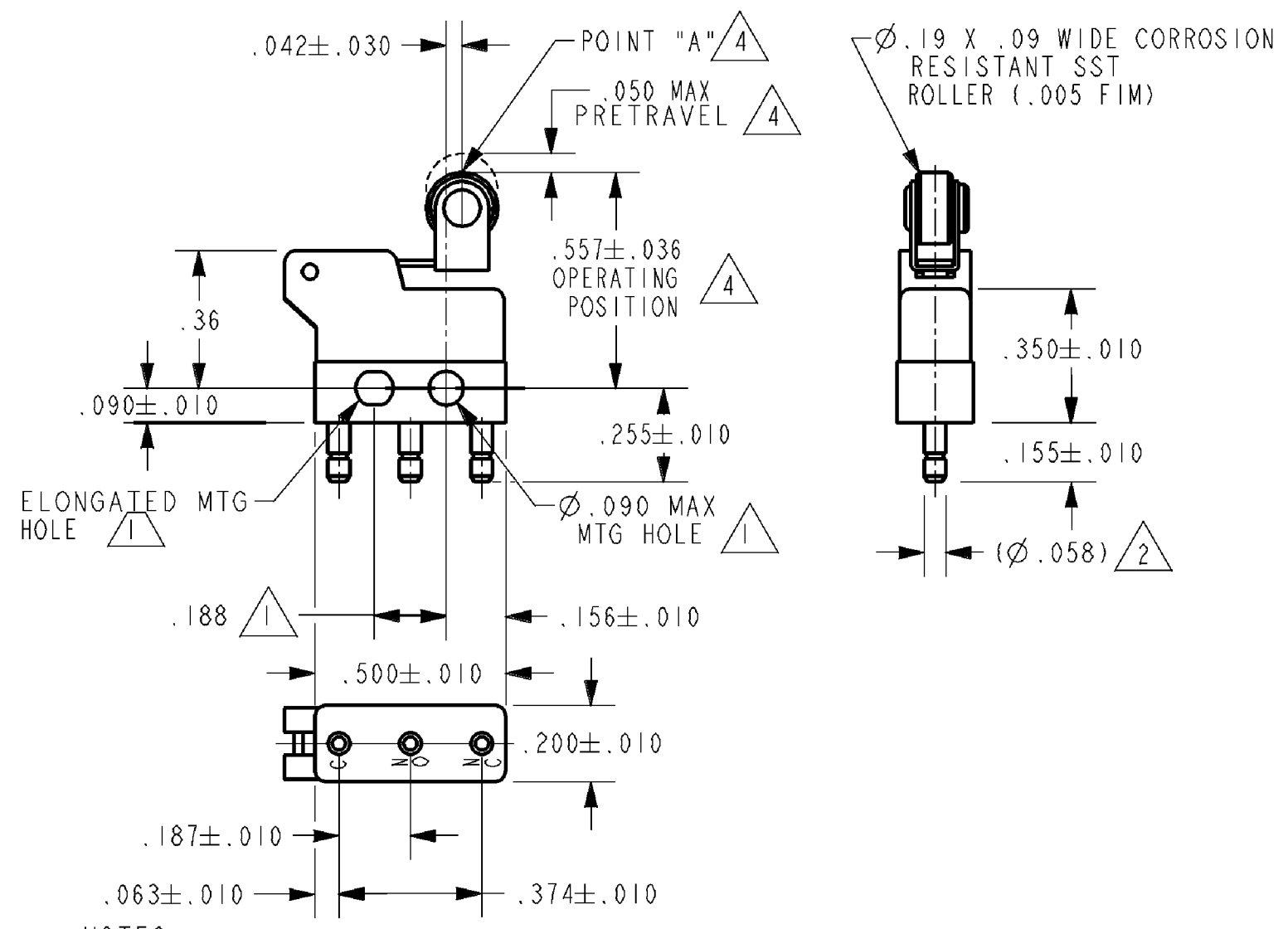
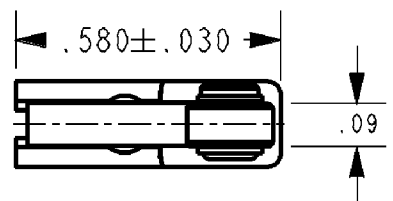


HONEYWELL  
PART NUMBER  
311SX64-H58  
PRODUCT CODE  
VDS0420

REV	DOCUMENT	CHANGED BY	CHECK
6	0038558	SS 08MAY08	BLR



- NOTES
- 1 MOUNTING HOLES WILL ACCEPT PINS OR SCREWS OF Ø.087 MAX ON .188 ± .002 CENTERS
  - 2 PLATED TERMINALS WILL ACCEPT "AMP INC" Ø.058 PIN RECEPTACLES
  - 3 - SWITCH WILL WITHSTAND TEMPERATURE OF 250° F
  - 4 CHARACTERISTICS ARE TAKEN AT POINT "A"

RELEASE NO.	PR-20528
REPLACES	X94378-SX

CHARACTERISTICS <sup>4</sup>	OPERATING FORCE -- -- 67 GRAM MAX
	RELEASE FORCE -- -- -- 11 GRAM MIN
	DIFFERENTIAL TRAVEL -- -- .015 MAX
	OVERTRAVEL -- -- -- .010 MIN

ELECTRICAL DATA			
CONTACT ARRANGEMENT SPDT			
	28 VOLTS DC RATING		115 VOLTS AC, 60 CPS
	SEA LEVEL	50,000 FT	SEA LEVEL
INDUCTIVE	3 AMP	2 AMP	5 AMP
RESISTIVE	5 AMP	4 AMP	5 AMP
APPROVALS	KEMA, CE 5A 250 V - T125 5E4 UL, CSA 5A 250 VAC   BRAND L4L		

DESIGN UNITS: INCH
TOLERANCES UNLESS NOTED:
NO PLACE X ±
ONE PLACE .X ±
TWO PLACE .XX ±
THREE PLACE .XXX ±
FOUR PLACE .XXXX ±
ANGLES ±
THIRD ANGLE PROJECTION

DRAWN	SPK	26FEB08
CHECK	RJ	26FEB08
THIS DRAWING COVERS A PROPRIETARY ITEM AND IS THE PROPERTY OF HONEYWELL. THIS DRAWING IS NOT TO BE COPIED OR USED WITHOUT THE PERMISSION OF HONEYWELL.		
INTERPRET PER ANSI Y14.5M-1982 OTHER HONEYWELL ENGINEERING STANDARDS MAY APPLY		
RASTER		

<b>Honeywell</b>			
TITLE SWITCH - BASIC			
SIZE	TYPE	DRAWING NAME	REV
<b>B</b>	<b>I</b>	<b>311SX64-H58</b>	<b>6</b>
SCALE	-	WEIGHT: .003 LB MAX	SHEET 1 OF 1