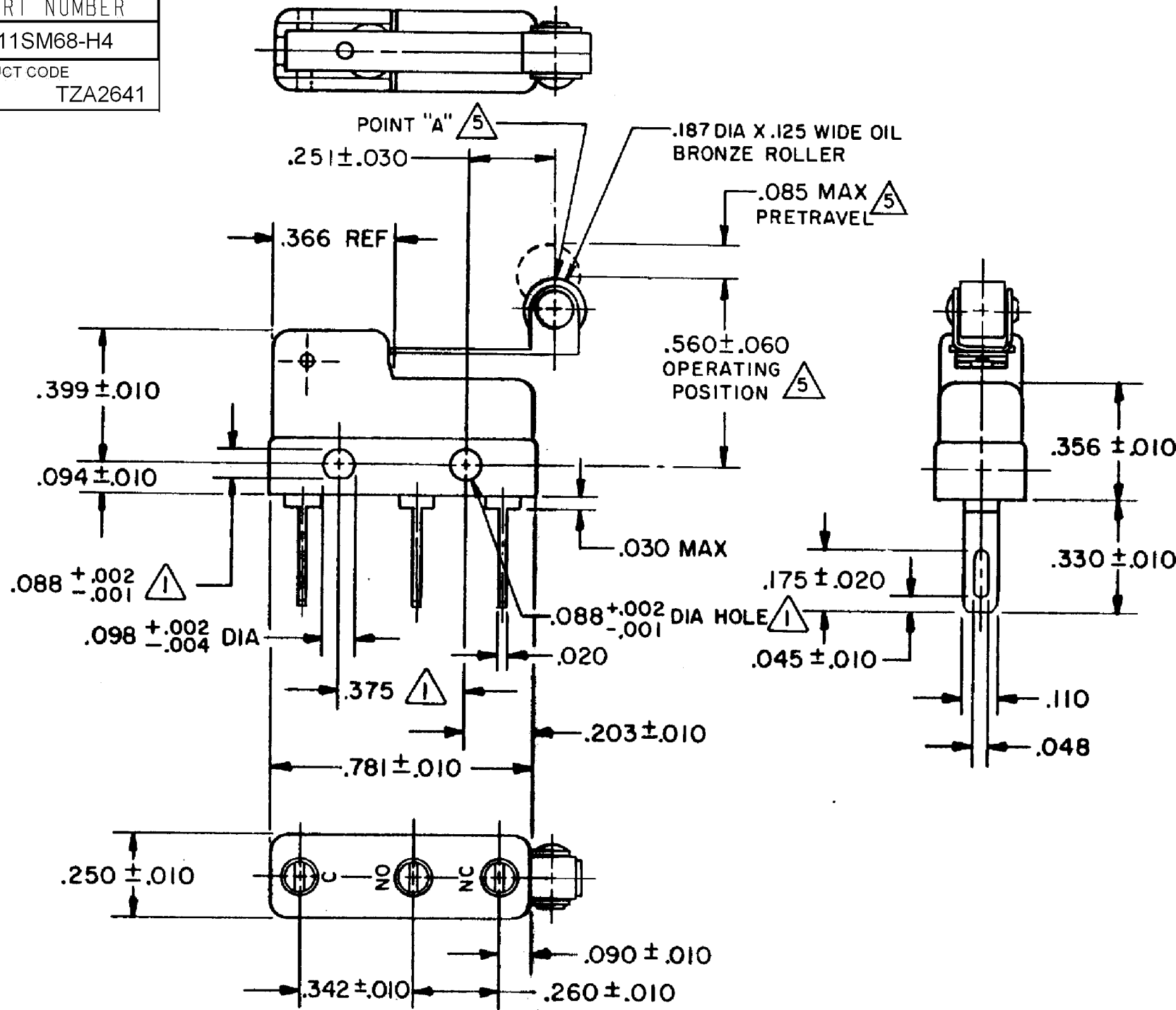


HONEYWELL PART NUMBER
311SM68-H4
PRODUCT CODE TZA2641

REV	DOCUMENT	CHANGED BY	CHECK
9	0038114	KVS 03JUN08	ASD



NOTES

- 1 MOUNTING HOLES WILL ACCEPT PINS OR SCREWS
- 2 - TERMINALS ARE PLATED FOR SOLDERING
- 3 - SWITCH WILL WITHSTAND TEMPERATURE OF 250°F
- 4 - MATING CONTACT SURFACES ARE 24K SOLID GOLD OVERLAY
- 5 - CHARACTERISTICS TAKEN AT POINT "A"

RELEASE NO.	PR - 5504
REPLACES	-

CHARACTERISTICS 5
OPERATING FORCE - - 40 GRAM MAX
RELEASE FORCE - - - - 7 GRAM MIN
DIFFERENTIAL TRAVEL - - - .019 MAX
OVERTRAVEL - - - - - .018 MIN

ELECTRICAL DATA		
CONTACT ARRANGEMENT SPDT		
30 VOLTS DC RATING		
	SEA LEVEL	50,000 FT
INDUCTIVE	1/2 AMP	1/2 AMP
RESISTIVE	1 AMP	1 AMP
MAXIMUM INRUSH 2 AMP		
APPROVALS	KEMA, CE	1A, 250V ~ T85 1E4
	UL, CSA	1A, 125 VAC

DESIGN UNITS: INCH
TOLERANCES UNLESS NOTED:
NO PLACE X ±
ONE PLACE .X ±
TWO PLACE .XX ±
THREE PLACE .XXX ±
FOUR PLACE .XXXX ±
ANGLES ±
THIRD ANGLE PROJECTION

DRAWN	VK	07 NOV 07
CHECK	RJ	07 NOV 07
THIS DRAWING COVERS A PROPRIETARY ITEM AND IS THE PROPERTY OF HONEYWELL. THIS DRAWING IS NOT TO BE COPIED OR USED WITHOUT THE PERMISSION OF HONEYWELL.		
INTERPRET PER ANSI Y14.5M-1982 OTHER HONEYWELL ENGINEERING STANDARDS MAY APPLY		

<b>Honeywell</b>			
TITLE <b>SWITCH - BASIC</b>			
SIZE	TYPE	DRAWING NAME	REV
<b>B</b>	<b>I</b>	<b>311SM68-H4</b>	<b>9</b>
SCALE	-	WEIGHT .006 LB MAX	SHEET 1 OF 1