

MICRO SWITCH

A DIVISION OF MINNEAPOLIS-HONEYWELL REGULATOR COMPANY
 FREEPORT, ILLINOIS

FED. MFR. CODE 91929

SWITCH - BASIC

CATALOG LISTING

IXEI-T

MILITARY STDS PART
 NO. MS - 27994 - 3

IXEI-T

M

DRAWING NUMBER

ISSUE

4

84

REPLACES

SR 10065

RELEASE NO.

15 FEB 62

15 FEB 62

15 FEB 62

15 FEB 62

15 FEB 62

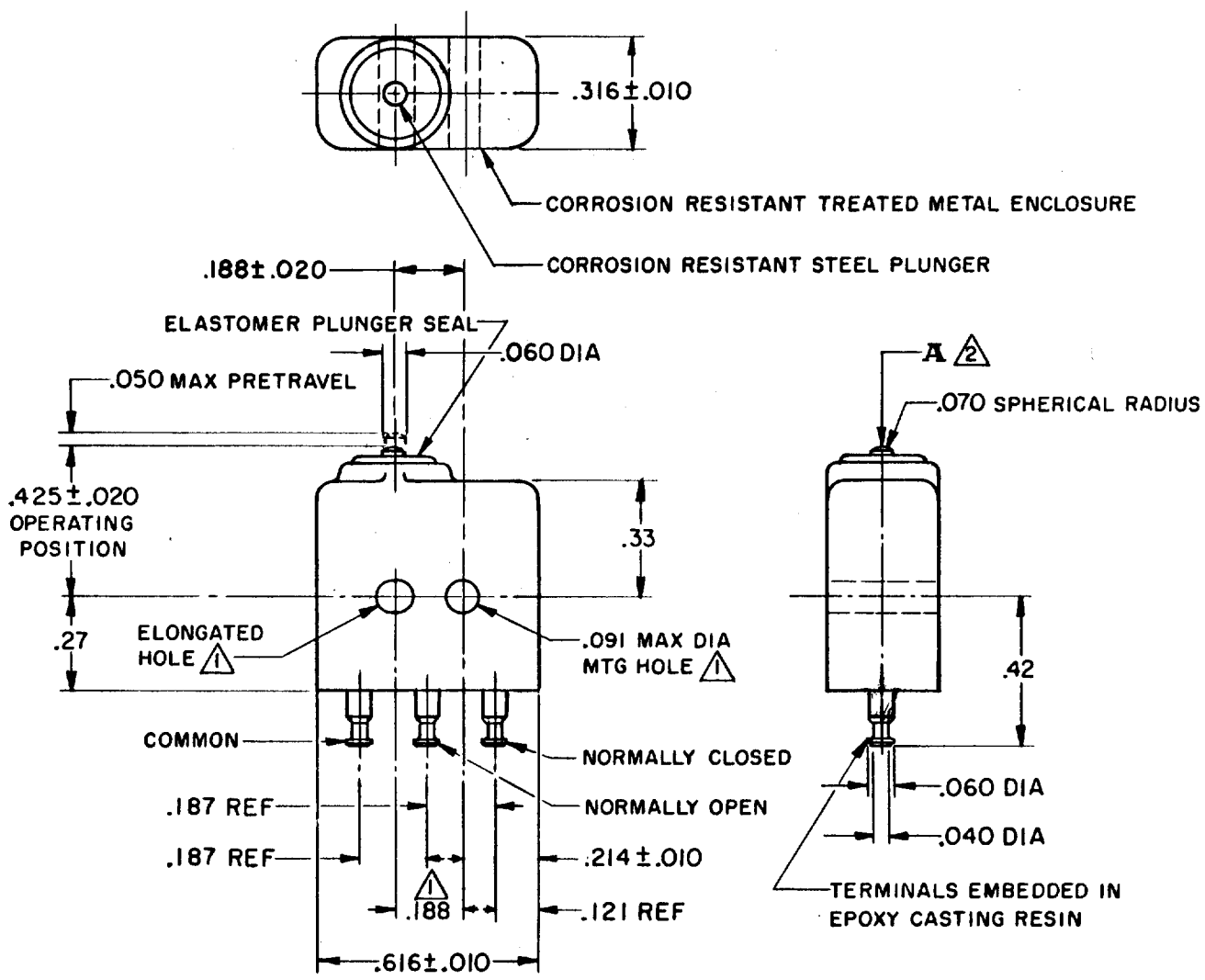
15 FEB 62

15 FEB 62

15 FEB 62

15 FEB 62

15 FEB 62



NOTE -
 ▲ MOUNTING HOLES WILL ACCEPT .087 MAX DIA PINS OR SCREWS ON $.188 \pm .002$ CENTERS
 ▲ ACTUATION IN LINE WITH ARROW "A" IS RECOMMENDED

THIS DRAWING COVERS A PROPRIETARY ITEM AND IS THE PROPERTY OF MICRO SWITCH, A DIVISION OF MINNEAPOLIS-HONEYWELL REGULATOR CO. THIS DRAWING IS NOT TO BE COPIED OR USED WITHOUT THE APPROVAL OF MICRO SWITCH.

CHARACTERISTICS	ELECTRICAL DATA	SCALE 2 TO 1
OPERATING FORCE ----- 5-17 OZ	CONTACT ARRANGEMENT S P D T	DO NOT SCALE PRINT
RELEASE FORCE ----- 4 OZ MIN	28 VOLTS DC RATING	UNLESS OTHERWISE SPECIFIED
RELEASE TRAVEL ----- .004 MIN	INDUCTIVE ----- SEA LEVEL ----- 4 AMP	DIMENSIONS ARE IN INCHES
DIFFERENTIAL TRAVEL ----- .005 MAX	INDUCTIVE ----- 50,000 FT ----- 2.5 AMP	TOLERANCES ARE:
OVERTRAVEL ----- .004 MIN	RESISTIVE ----- SEA LEVEL ----- 7 AMP	ONE PLACE (.0) ±.030
	RESISTIVE ----- 50,000 FT ----- 7 AMP	TWO PLACE (.00) ±.015
	LAMP ----- SEA LEVEL ----- 1 AMP	THREE PLACE (.000) ±.005
	MOTOR ----- SEA LEVEL ----- 2.5 AMP	ANGLES ±
	115 V 400 CYCLES ----- SEA LEVEL	WEIGHT .16 OZ MAX
	RESISTIVE ----- 7 AMP	
	INDUCTIVE ----- 4 AMP	
	LAMP ----- 1 AMP	
	MOTOR ----- 1.5 AMP	

FO-50378

DRAWN

D W V 13 FEB 62