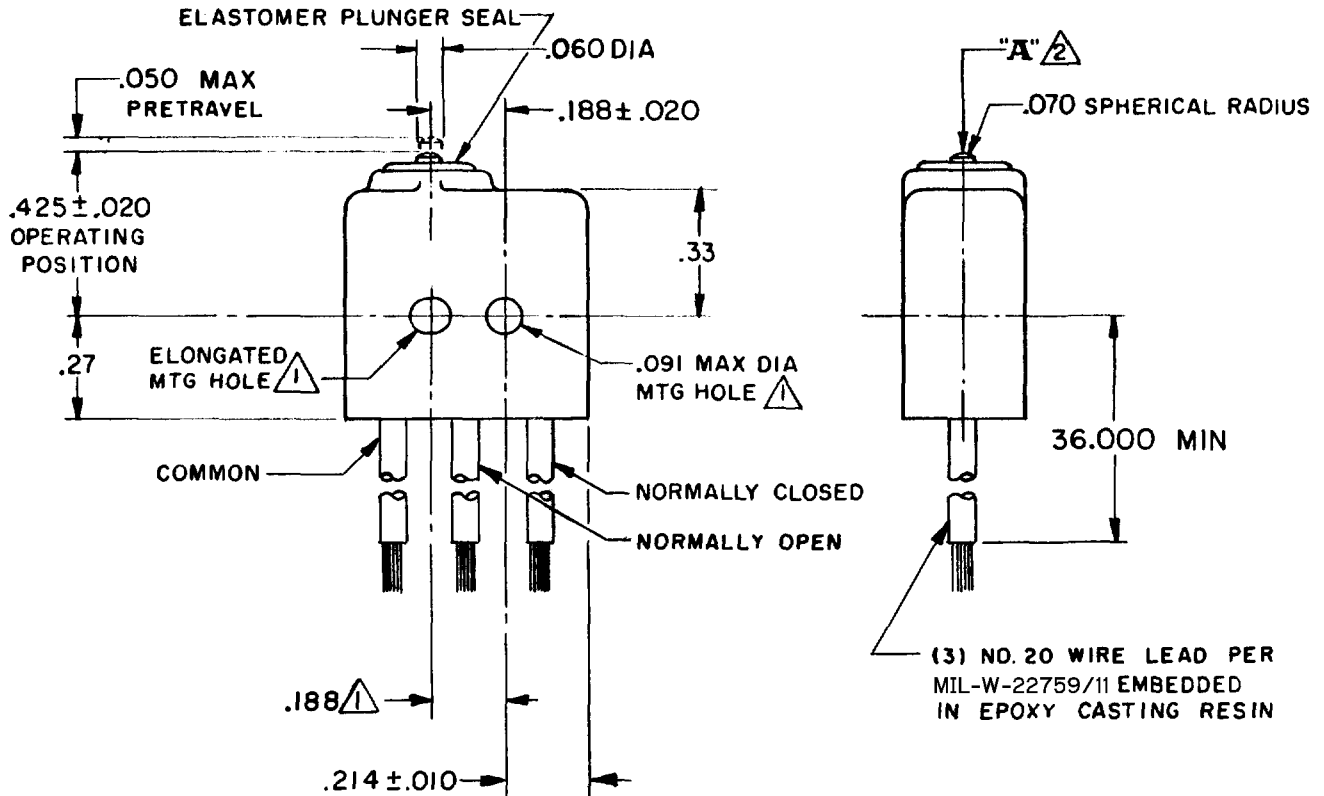
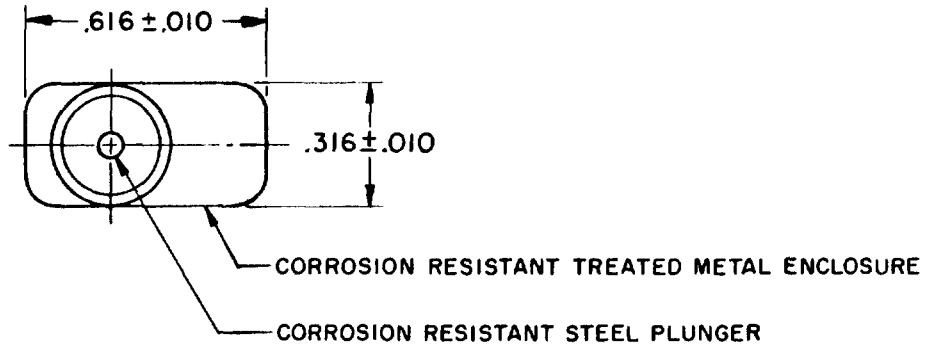


FED. MFG. CODE 91929



NOTE -

- ① MOUNTING HOLES WILL ACCEPT .087 MAX DIA PINS OR SCREWS ON .188 ± .002 CENTERS
- ② ACTUATION IN LINE WITH ARROW "A" IS RECOMMENDED
- ③ WEIGHT OF SWITCH ONLY IS .16 OZ MAX. WEIGHT OF SWITCH WITH WIRE LEADS IS 1.75 OZ MAX

THIS DRAWING COVERS A PROPRIETARY ITEM AND IS THE PROPERTY OF MICRO SWITCH, A DIVISION OF MINNEAPOLIS-HONEYWELL REGULATOR CO. THIS DRAWING IS NOT TO BE COPIED OR USED WITHOUT THE APPROVAL OF MICRO SWITCH.

CHARACTERISTICS

OPERATING FORCE ----- 5 - 17 OZ
 RELEASE FORCE ----- 4 OZ MIN
 RELEASE TRAVEL ----- .004 MIN
 DIFFERENTIAL TRAVEL ----- .005 MAX
 OVERTRAVEL ----- .004 MIN

ELECTRICAL DATA

CONTACT ARRANGEMENT
S P D T
 28 VOLTS DC RATING
 INDUCTIVE ----- SEA LEVEL ----- 4 AMP
 50,000 FT ----- 2.5 AMP
 RESISTIVE ----- SEA LEVEL ----- 7 AMP
 50,000 FT ----- 7 AMP
 MAXIMUM INRUSH ----- 24 AMP

SCALE 2 TO 1

DO NOT SCALE PRINT

UNLESS OTHERWISE NOTED
 DIMENSIONS ARE IN INCHES

TOLERANCES ARE:

ONE PLACE (.0) ± .030
 TWO PLACE (.00) ± .015
 THREE PLACE (.000) ± .005
 ANGLES ±

WEIGHT ③

IXE1-3
 PAGE 1 OF 1
M
 DRAWING NUMBER
X 2
 ISSUE
3 4
 REVISIONS
 A CO 51463-D
 16 JUL 82
 WJM
 B CO 57328-A
 15 APR 85
 WJM
 C C094274
 DLM
 MAR 99
 CHECK 21 FEB 64
 CHECK BRT
 CHECK 21 FEB 64
 CHECK DAW
 CHECK 19 FEB 64
 DRAWN
 FORMTEK
 FO-50378
 RELEASE NO. SR 11499
 REPLACES