

**MICRO SWITCH**  
 FREEPORT ILLINOIS U.S.A.  
 A DIVISION OF HONEYWELL  
 FED MFG CODE 91829

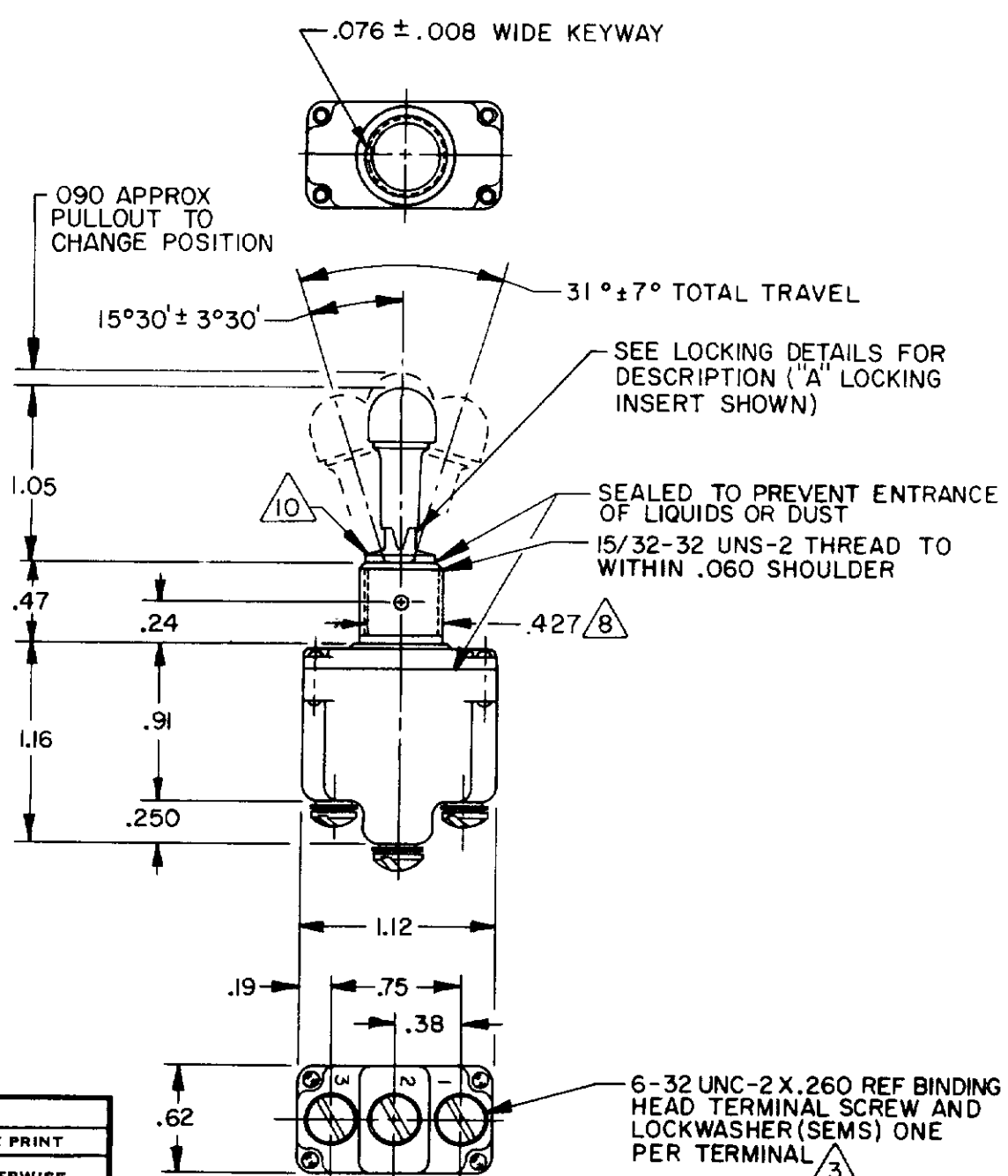
**SWITCH-TOGGLE**

CATALOG LISTING  
**1TL887 SERIES**  
**CHART 2**

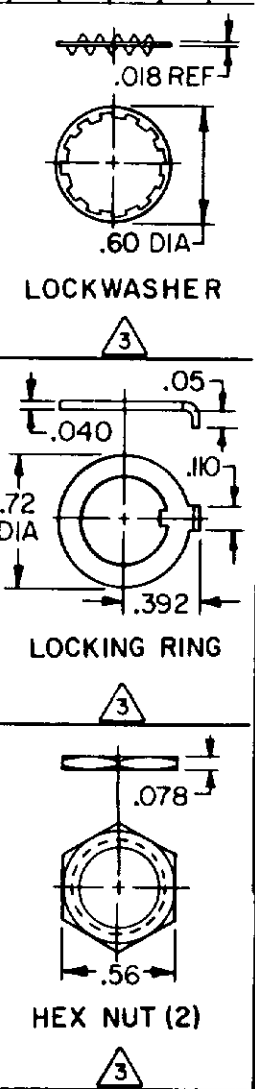
THIS DRAWING COVERS A PROPRIETARY ITEM AND IS THE PROPERTY OF MICRO SWITCH A DIVISION OF HONEYWELL THIS DRAWING IS NOT TO BE COPIED OR USED WITHOUT THE APPROVAL OF MICRO SWITCH

CATALOG LISTING	AVAILABLE LOCKING COMBINATIONS FOR CONFIGURATION SEE LETTERING DETAILS	CIRCUIT MADE WITH TOGGLE LEVER IN			CURRENT CAPACITY (AMPS)									
		KEYWAY SIDE (1-2)	CENTER (1-2)	OPPOSITE KEYWAY (2-3)	RESISTIVE LOAD DC VOLTS		LAMP LOAD IAC VOLTS		IND. LOAD					
					28	125	250	125	250	28	125	28	125	
ITL887-1	AB,DE,FG,H,J,K,L,M,NP	ON	OFF	ON										
ITL887-2	D,F,G	OFF	NONE	ON										
ITL887-3	D,F,G	ON	NONE	ON	20	.75	.5	15	6	5	3	15	10	
ITL887-2I	E,F,K,M	NONE	OFF	ON	(REFER TO L191 FOR UL LISTING)									
ITL887-3I	E,F,K,M	NONE	ON	ON	(REFER TO L191 FOR UL LISTING)									
ITL887-4	F	MOM OFF	NONE	ON										
ITL887-5	E,F,K,L,M,N	MOM ON	OFF	ON										
ITL887-6	F	MOM ON	NONE	OFF										
ITL887-7	E,L,N	MOM ON	OFF	MOM ON	15	.75	5	15	6	4	2	10	7	
ITL887-8	F	MOM ON	NONE	ON	(REFER TO L192 FOR UL LISTING)									
ITL887-5I	E	NONE	ON	MOM ON	(REFER TO L192 FOR UL LISTING)									
ITL887-6I	E	MOM ON	OFF	NONE	(REFER TO L192 FOR UL LISTING)									

CATALOG LISTING  
**1TL887 SERIES CHART 2**  
 PAGE 1 OF 1  
 ISSUE **M**  
 5  
 REVISIONS  
 A C077942 JAF 28 JUN 94  
 B CO-94432 CS-1 23 NOV 99  
 C 0012918 DVM 11 MAY 05  
 DRAWN RASTER  
 JAF 28 JUN 94  
 CHECK AK 11MAY05  
 RELEASE NO PR-14057-T REPLACES



"A" LOCKED IN THREE POSITIONS	"B" LOCKED IN CENTER AND EXTREME POSITION (KEYWAY SIDE)	"D" LOCKED OUT OF CENTER POSITION	"E" LOCKED IN CENTER POSITION	"F" LOCKED IN EXTREME POSITION (OPPOSITE KEYWAY)
"G" LOCKED IN EXTREME POSITION (KEYWAY SIDE)	"H" LOCKED OUT OF CENTER AND EXTREME POSITION (KEYWAY SIDE)	"J" LOCKED OUT OF CENTER AND EXTREME POSITION (OPPOSITE KEYWAY)	"K" LOCKED IN CENTER AND EXTREME POSITION (OPPOSITE KEYWAY)	"L" LOCKED OUT OF EXTREME POSITION (KEYWAY SIDE)
"M" LOCKED OUT OF AND INTO EXTREME POSITION (OPPOSITE KEYWAY)	"N" LOCKED OUT OF EXTREME POSITION (OPPOSITE KEYWAY)	"P" LOCKED OUT OF AND INTO EXTREME POSITION (KEYWAY SIDE)		



NOTES

- SWITCHES ARE CAPABLE OF WITHSTANDING A TEMPERATURE OF 160°F CONTINUOUSLY AT FULL RATED LOAD
- CIRCUIT DESIGNATION AND MICRO SWITCH CATALOG LISTING MARKED ON SIDE OF SWITCH
- FURNISHED UNASSEMBLED
- FOR TERMINAL COVER SEE MICRO SWITCH CAT. LIST. 5PA7
- KEYWAY SHOWN ON LEFT SIDE
- SUFFIX LETTER MUST BE ADDED FOR DESIRED TYPE OF TOGGLE LOCKING. SEE CHART FOR AVAILABLE LOCKING COMBINATIONS
- APPLIES ONLY TO "ON" AND "MOMENTARY ON" POSITIONS
- FROM BOTTOM OF KEYWAY TO MAJOR DIA. OF 15/32 THREAD
- CONFORMS TO REQUIRMENTS OF MIL-DTL-3950 EXCEPT: GOLD PLATED CONTACTS
- INSERT HAS A .15 WIDE CLEANING SLOT AT EACH END INLINE WITH TOGGLE TRAVEL

SCALE FULL  
 DO NOT SCALE PRINT  
 UNLESS OTHERWISE NOTED  
 DIMENSIONS ARE IN INCHES  
**TOLERANCES ARE**  
 ONE PLACE (.0) HHHH 030  
 TWO PLACE (.00) HHHH 018  
 THREE PLACE (.000) HHHH 008  
 ANGLES HHHH 005  
 WEIGHT .08 LBS APPROX

L 191	L 192
15A 125, 250, 277 VAC	10A 125, 250, 277 VAC
1/2 HP 125 VAC.	1/4 HP 125 VAC.
1 HP 250, 277 VAC	1/2 HP 250, 277 VAC
5A 125 VAC "L"	3A 125 VAC "L"
RU CE	RU CE