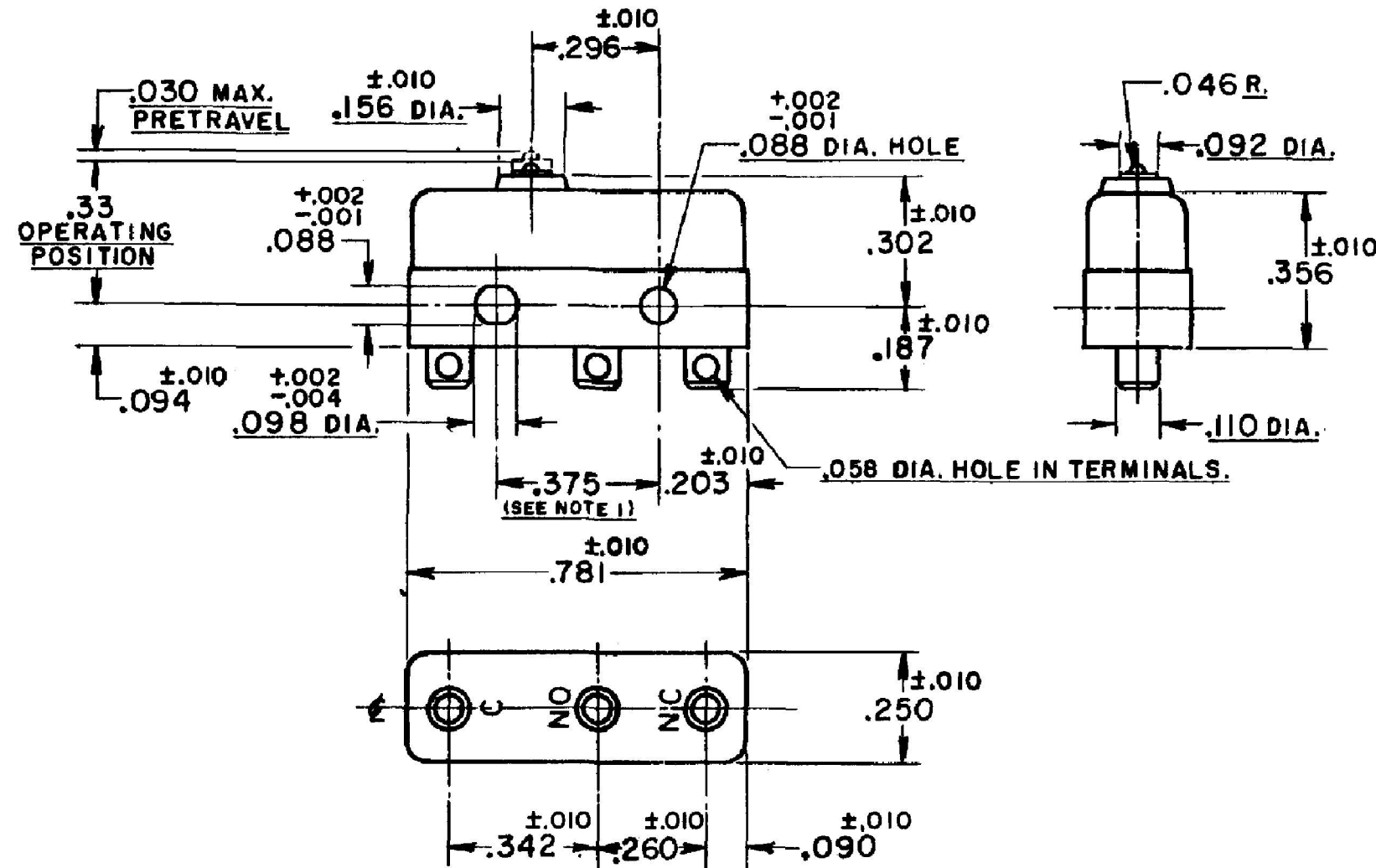
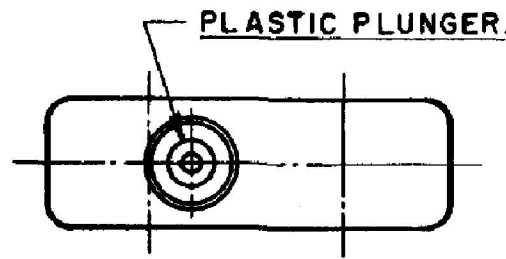


HONEYWELL PART NUMBER
1SM3
PRODUCT CODE: TWA0300 JG-80011J

REV	DOCUMENT	CHANGED BY	CHECK
13	0034444	JA 15OCT07	PSR



- NOTES**
- 1- MOUNTING HOLES WILL ACCEPT PINS OR SCREWS OF .087 MAX. DIA. ON .375^{±.002} CENTERS
 - 2- TERMINALS ARE PLATED FOR SOLDERING
 - 3- SWITCH WILL WITHSTAND TEMPERATURE OF 250°F

RELEASE NO.:
-
REPLACES
-

CHARACTERISTICS	
OPERATING FORCE	3-5 OZ.
RELEASE FORCE	1 OZ. MIN.
DIFFERENTIAL TRAVEL	.004 MAX.
OVERTRAVEL	.005 MIN.

ELECTRICAL DATA			
CONTACT ARRANGEMENT SPDT			
30 VOLTS DC RATING			
	SEA LEVEL	50,000 FT	
INDUCTIVE	3 AMP	2.5 AMP	
RESISTIVE	5 AMP	5 AMP	
MAXIMUM INRUSH 24 AMP			
APPROVALS	KEMA, CE	5A, 250V ~ T85 1E4	
	UL, CSA	5A, 250 VAC	

DESIGN UNITS: INCH
TOLERANCES UNLESS NOTED:
NO PLACE X ± 0.040
ONE PLACE .X ± 0.030
TWO PLACE .XX ± 0.015
THREE PLACE .XXX ± 0.005
FOUR PLACE .XXXX ± 0.0005
ANGLES ± 2
THIRD ANGLE PROJECTION

DRAWN	JA	15OCT07
CHECK	PSR	15OCT07
THIS DRAWING COVERS A PROPRIETARY ITEM AND IS THE PROPERTY OF HONEYWELL. THIS DRAWING IS NOT TO BE COPIED OR USED WITHOUT THE PERMISSION OF HONEYWELL.		
INTERPRET PER ASME Y14.5M-1994 OTHER HONEYWELL ENGINEERING STANDARDS MAY APPLY		
RASTER		

Honeywell			
TITLE SWITCH-BASIC			
SIZE	TYPE	DRAWING NAME	REV
B	I	1SM3	13
SCALE	-	WEIGHT .006 LB MAX	SHEET 1 OF 1