

MICRO SWITCH

A DIVISION OF HONEYWELL-INTERNATIONAL CORPORATION
 A DIVISION OF HONEYWELL INFORMATION SYSTEMS CORPORATION
 HARTFORD, CONNECTICUT

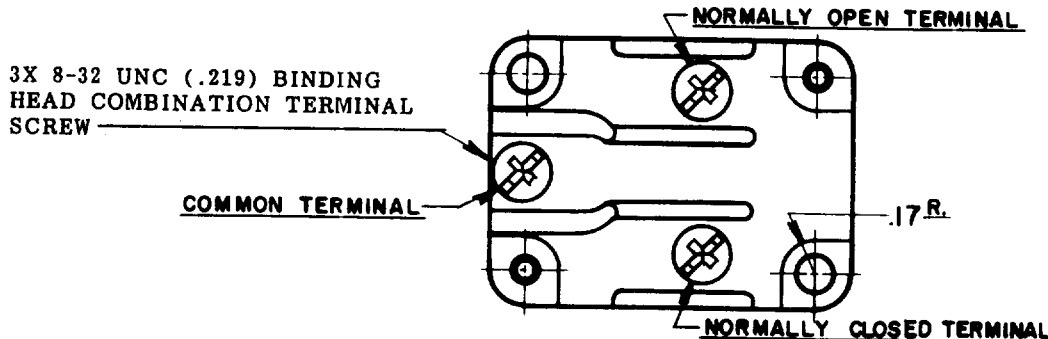
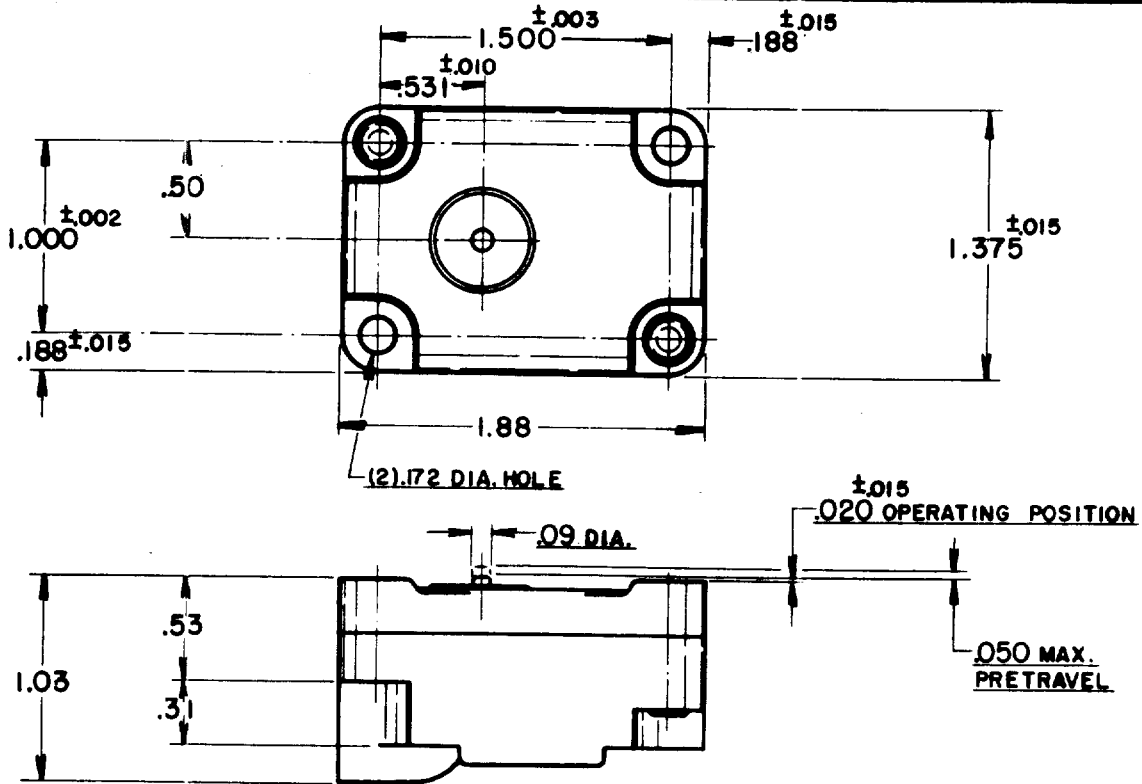
FED. MFR. CODE 91929

SWITCH - BASIC

CATALOG LISTING

1MK5

IMK5
 ISSUE 2



3X 8-32 UNC (.219) BINDING HEAD COMBINATION TERMINAL SCREW

NOTE -
 1- ONLY NO. 8 ROUND HEAD SCREWS AND SAE LIGHT SPRING WASHER SHOULD BE USED FOR MOUNTING SWITCH IN ORDER TO PROVIDE PROPER ELECTRICAL CLEARANCES.

THIS DRAWING COVERS A PROPRIETARY ITEM AND IS THE PROPERTY OF MICRO SWITCH, A DIVISION OF HONEYWELL. THIS DRAWING IS NOT TO BE COPIED OR USED WITHOUT THE APPROVAL OF MICRO SWITCH.

CHARACTERISTICS	ELECTRICAL DATA		SCALE FULL
OPERATING FORCE-----10 OZ. MAX.	CONTACT ARRANGEMENT	BREAK DISTANCE	DO NOT SCALE PRINT
DIFFERENTIAL TRAVEL-----.002-.0075	S. P. D. T.	.020 MIN.	UNLESS OTHERWISE SPECIFIED DIMENSIONS ARE IN INCHES
RELEASE FORCE-----4 OZ. MIN.			
OVERTRAVEL-----.010 MIN.			TOLERANCES ARE:
			ONE PLACE (.0) ±.030
			TWO PLACE (.00) ±.015
			THREE PLACE (.000) ±.005
			ANGLES ±
			WEIGHT

IMK5

M

DRAWING NUMBER

4

ISSUE

84

REVISIONS

A 001012Z

R. G. C.

9.11.56

B 173287-6

J. A. L.

20 OCT 93

CHECK

VHS

7 JAN. 56

CHECK

VHS

7 JAN. 56

CHECK

FVK

7 JAN. 56

CHECK

FVK

7 JAN. 56

CHECK

FVK

7 JAN. 56

CHECK

FVK

7 JAN. 56

CHECK

FVK

7 JAN. 56

CHECK

FVK

7 JAN. 56

74-86

DRAWN

R. G. C.

6, JAN. 56