

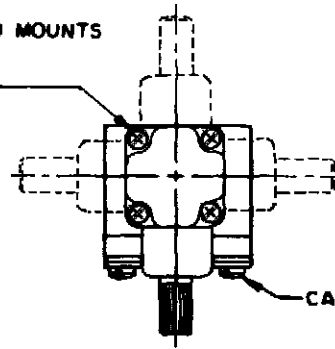
MICRO SWITCH
a Honeywell Division

SWITCH-ENCLOSED

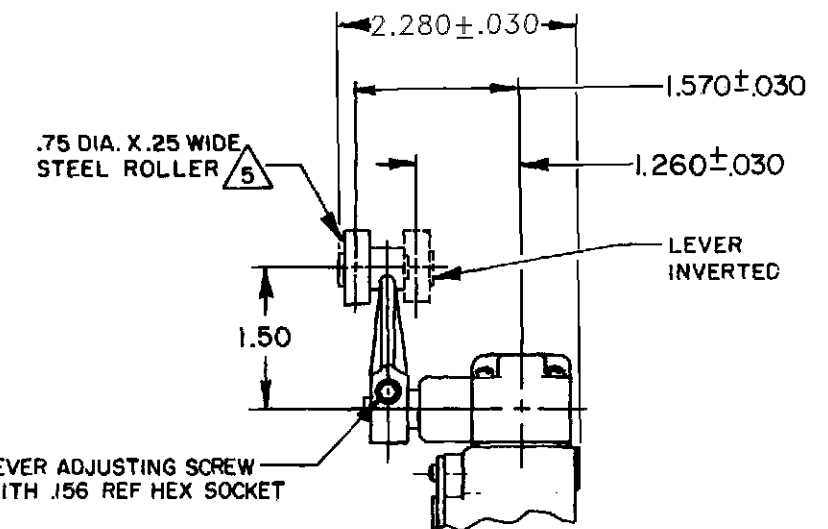
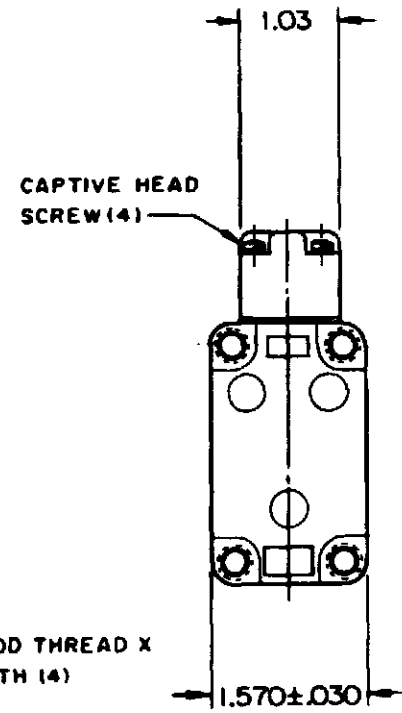
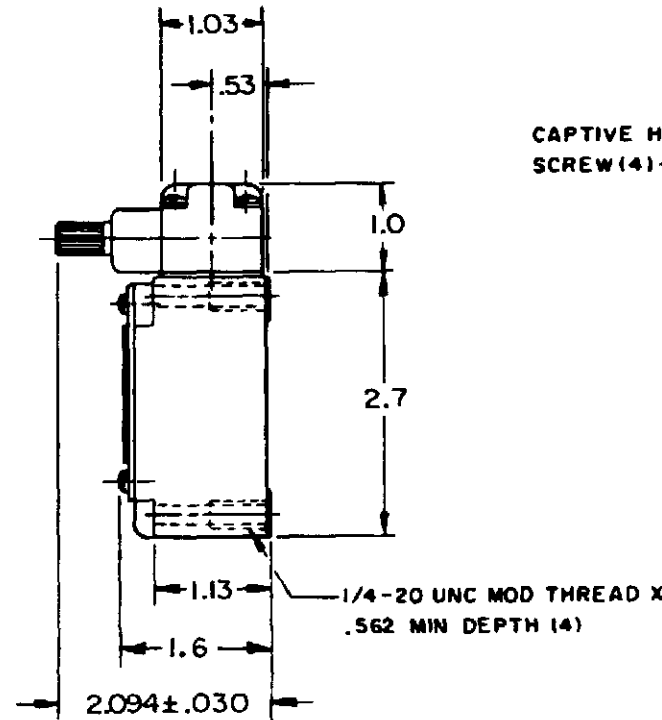
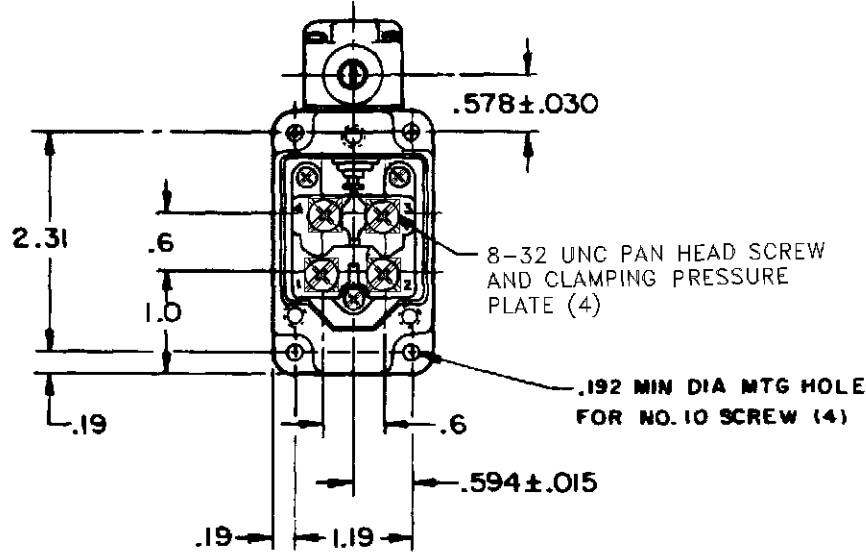
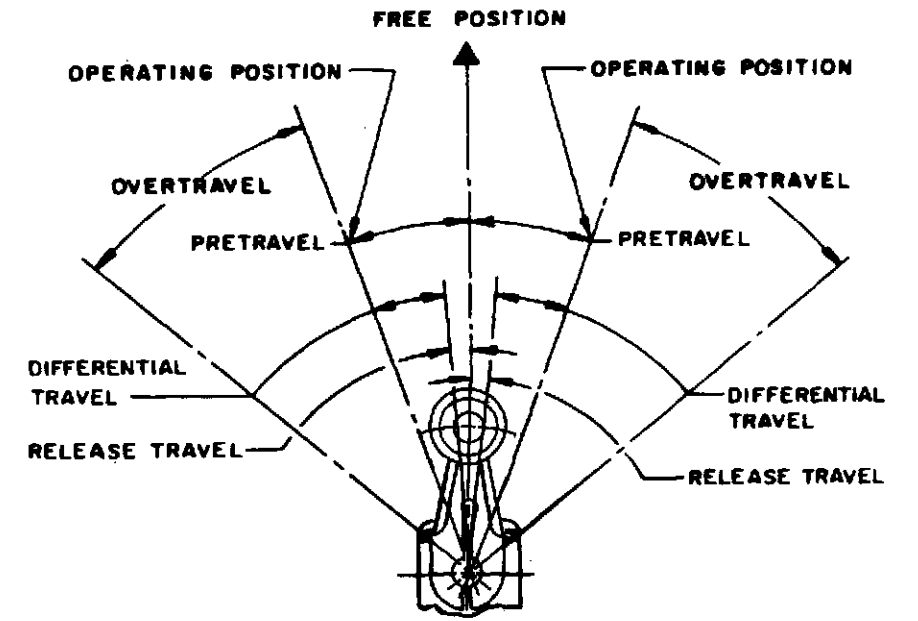
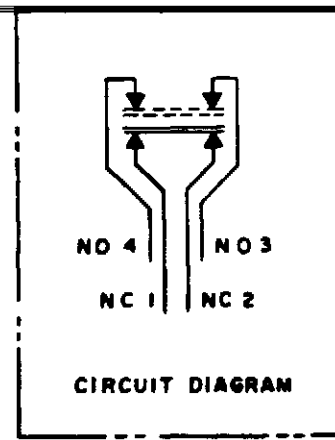
CATALOG LISTING
1LS1-L-SIG

FED. MFG. CODE 91929

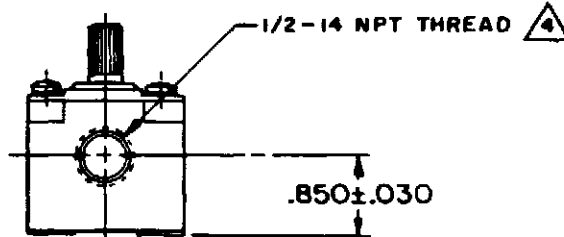
OPERATING HEAD MOUNTS
IN ANY OF FOUR
POSITIONS



CAPTIVE COVER SCREW (3)



CAM TRACKING VIEW



CATALOG LISTING
1LS1-L-SIG
PAGE 1 OF 1
REPLACES
RELEASE NO. PR-19752

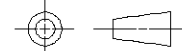
ISSUE
4

REVISIONS
A CO-76997
GJW 22 MAR 95
B CO-95463-B
DLT 3 SEP 99
C REINST PR-24387
GJW 29 FEB 00

CHECK
5 MAY 95
JAF
CHECK
22 MAR 95
GJW
DRAWN

THIS DRAWING COVERS A PROPRIETARY ITEM AND IS THE PROPERTY OF MICRO SWITCH, A DIVISION OF HONEYWELL. THIS DRAWING IS NOT TO BE COPIED OR USED WITHOUT THE APPROVAL OF MICRO SWITCH

THIRD ANGLE PROJECTION



CHARACTERISTICS

OPERATING TORQUE — 4 1/2 IN LB MAX
FULL OVERTRAVEL TORQUE — 6 IN LB MAX
RELEASE TORQUE — — 3/4 IN LB MIN
PRETRAVEL — — — — 20° MAX
DIFFERENTIAL TRAVEL — — — 12° MAX
OVERTRAVEL — — — — — 30° MIN
RELEASE TRAVEL — — — — — 5° MIN
SWITCH-BASIC REPLACEMENT — — — 2MNI-L

ELECTRICAL DATA

CONTACT ARRANGEMENT
(SEE CIRCUIT DIAGRAM)

L126 10A 125, 250 OR 480 VAC
1/3HP 125 VAC, 3/4HP 250 VAC
0.8A 125 VDC, 0.4A 250 VDC

SCALE 1/2 TO 1

DO NOT SCALE PRINT

UNLESS OTHERWISE SPECIFIED TOLERANCES ARE

ONE PLACE (.0) ±.030
TWO PLACE (.00) ±.015
THREE PLACE (.000) ±.005
ANGLES ±

WEIGHT



NOTES

- SWITCH IS ASSEMBLED FOR ACTUATION IN BOTH DIRECTIONS BUT MAY BE ADJUSTED TO ACTUATE IN EITHER THE CLOCKWISE DIRECTION ONLY OR THE COUNTERCLOCKWISE DIRECTION ONLY
- TO CONVERT SWITCH FOR ACTUATION IN EITHER THE CLOCKWISE OR COUNTERCLOCKWISE DIRECTION ONLY, REMOVE ACTUATOR HEAD AND ROTATE THE NOTCHED PLUNGER 90° TO THE RIGHT FOR CLOCKWISE ACTUATION OR 90° TO THE LEFT FOR COUNTERCLOCKWISE ACTUATION



SEAL TO BE FURNISHED BY USER



ROLLER LEVER MAY BE LOCKED IN ANY POSITION THRU 360°

6- LEVER FURNISHED UNASSEMBLED IN UNIT PACKING BOX

FORMTEK