

MICRO SWITCH

A DIVISION OF MINNEAPOLIS-HONEYWELL REGULATOR COMPANY
FROBDOPT, ILLINOIS

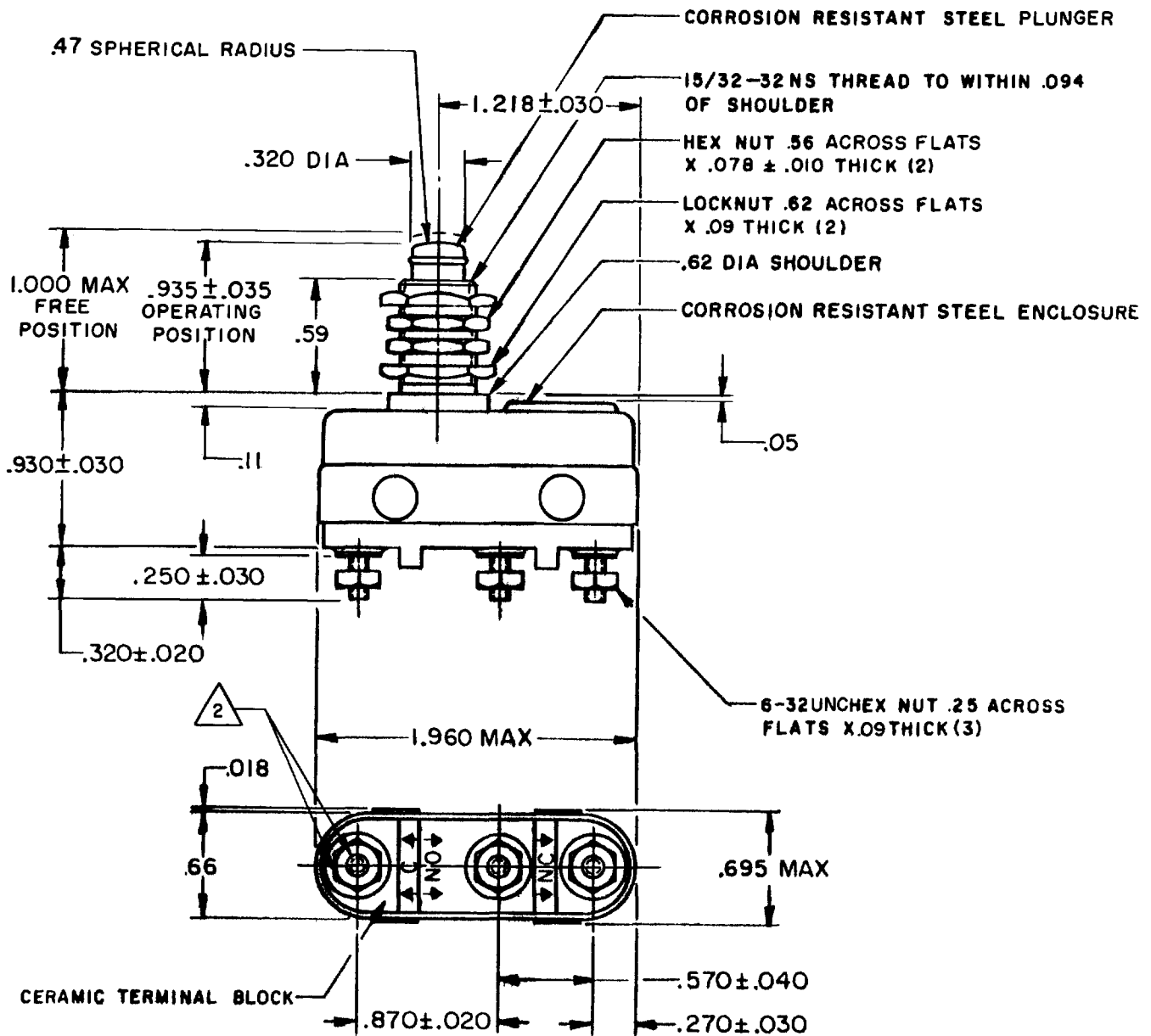
FED. MFR. CODE 91929

SWITCH - BASIC

CATALOG LISTING

IHTI

(M)IHTI
ISSUES



NOTE-

- 1-SWITCH WILL WITHSTAND TEMPERATURE OF 1000°F MAX
- 2 RECOMMENDED APPLIED TORQUE FOR A 6-32 UNC STAINLESS STEEL TERMINAL IS 10 IN LB MAX. EXCEEDING THIS TORQUE COULD DAMAGE THE SWITCH

THIS DRAWING COVERS A PROPRIETARY ITEM AND IS THE PROPERTY OF MICRO SWITCH, A DIVISION OF MINNEAPOLIS-HONEYWELL REGULATOR CO. THIS DRAWING IS NOT TO BE COPIED OR USED WITHOUT THE APPROVAL OF MICRO SWITCH.

CATALOG LISTING
IHTI
PAGE 1 OF 1
M
DRAWING NUMBER
ISSUE 19
RELEASE NO.
REPLACES
CHECK
REVISIONS
A CO16180 RER 1 SEP 61
B CO16367 RER 24 NOV 61
C CO18487 LEB 26 SEPT 63
D CO21919 OMW 12 APR 67
E CO29241 CO 29241
F CO32050 RER 30 AUG 71
G CO-36610 RER 17 MAY 73
H CO 53398 K'SW 10 FEB 76
I CO-92890 S L B 21 JUN 83
J CO-54474 DJ S 3 FEB 84
K CO-92890 CSL 6 MAY 98
FORMTEK
DRAWN
RER 1 SEP 61
CHECK DRAW 12 SEP 61
CHECK FTH 18 SEP 61

CHARACTERISTICS	
OPERATING FORCE	10-20 OZ
RELEASE FORCE	6 OZ MIN
PRETRAVEL	.065 MAX
DIFFERENTIAL TRAVEL	.010 MAX
OVERTRAVEL	.188 MIN

ELECTRICAL DATA	
CONTACT ARRANGEMENT S P D T	
L305 3A 1/10HP 125 VAC 2A 1/6HP 250 VAC	

SCALE FULL	
DO NOT SCALE PRINT	
UNLESS OTHERWISE SPECIFIED DIMENSIONS ARE IN INCHES	
TOLERANCES ARE:	
ONE PLACE (.0)	±.030
TWO PLACE (.00)	±.015
THREE PLACE (.000)	±.005
ANGLES	±
WEIGHT 2.4 OZ MAX	

