



MICRO SWITCH

FREEPORT ILLINOIS
A DIVISION OF HONEYWELL
FED. MFG. CODE 91929

SWITCH-BASIC

CATALOG LISTING

1HS3

1HS3

M
DRAWING NUMBER

ISSUE 17

PAGE 1 OF 1

REPLACES

RELEASE NO.

CHECK

CHECK

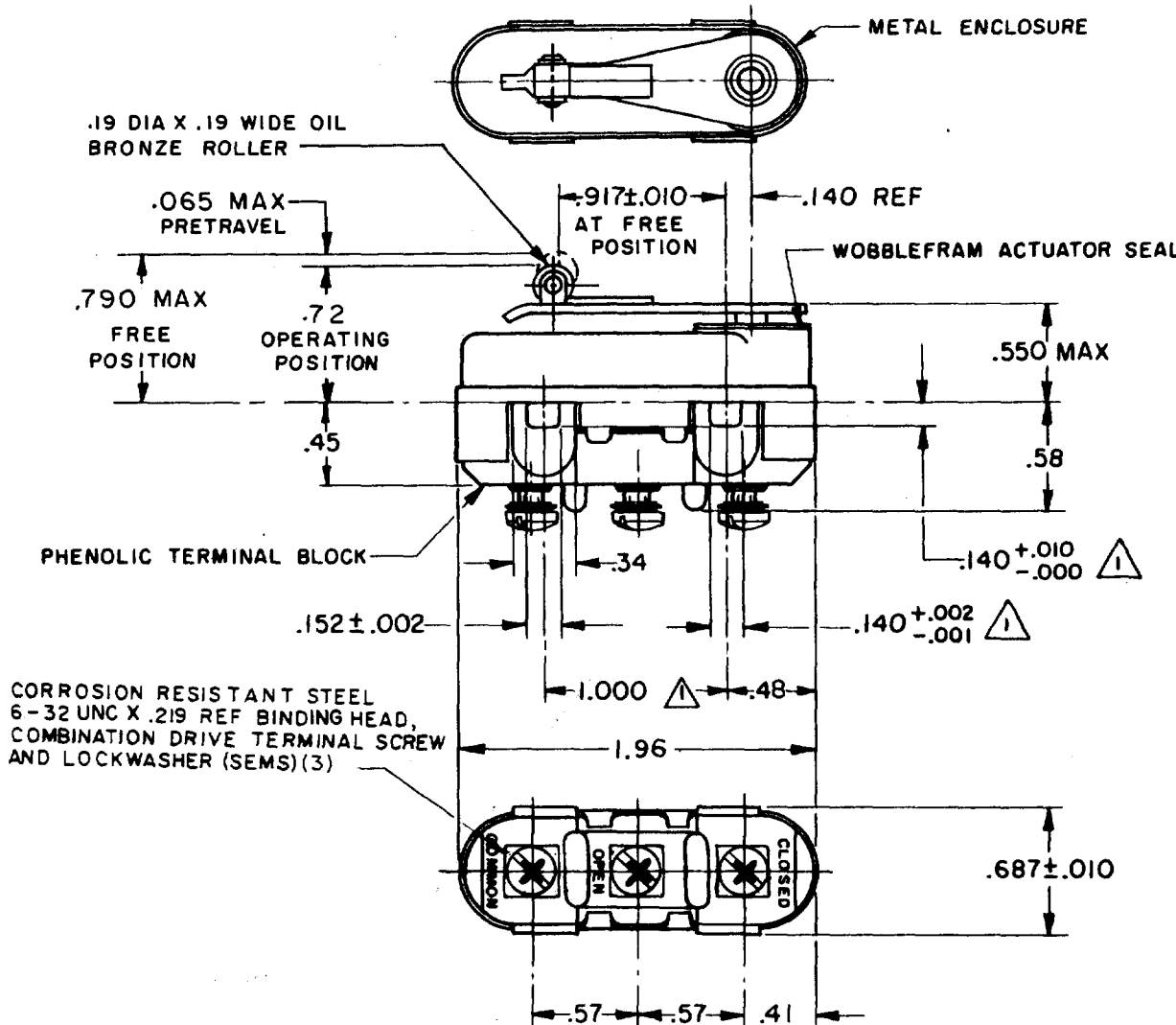
CHECK

CHECK

CHECK

CHECK

CHECK



NOTE -

▲ MOUNTING HOLES WILL ACCEPT PINS OR SCREWS OF .139 MAX DIA ON 1.000 ± .002 CENTERS

2 - TRAVEL CHARACTERISTICS ARE REFERENCED FROM THE UPPER SURFACE OF THE MOUNTING HOLES WITH THIS CONSTRUCTION

3 - FOR USE IN AMBIENT TEMPERATURE RANGE FROM MINUS 65° F TO PLUS 250° F

THIS DRAWING COVERS A PROPRIETARY ITEM AND IS THE PROPERTY OF MICRO SWITCH, A DIVISION OF MINNEAPOLIS-HONEYWELL REGULATOR CO. THIS DRAWING IS NOT TO BE COPIED OR USED WITHOUT THE APPROVAL OF MICRO SWITCH.

CHARACTERISTICS	ELECTRICAL DATA			SCALE FULL --
OPERATING FORCE --- 10-22 OZ	CONTACT ARRANGEMENT S P D T			DO NOT SCALE PRINT
RELEASE FORCE --- 4 OZ MIN	LINE VOLTAGE	INDUCTIVE LOAD	RESISTIVE LOAD	UNLESS OTHERWISE SPECIFIED DIMENSIONS ARE IN INCHES
DIFFERENTIAL TRAVEL --- .020 MAX	28 VDC	8 AMP (SEA LEVEL - 100,000 FT)	25 AMP	TOLERANCES ARE:
OVERTRAVEL --- .010 MIN	125 VAC	1 AMP (SEA LEVEL - 70,000 FT)	5 AMP	ONE PLACE (.0) ±.030
				TWO PLACE (.00) ±.015
				THREE PLACE (.000) ±.005
				ANGLES ±
	L277 1A-125VAC, 5A-28VDC			WEIGHT 1.6 OZ MAX

FO-50378
FORMTEK

DRAWN

REVISIONS

A	CO17633	M B F	14 FEB 63
B	CO30206	D B W	13 MAR 72
C	CO55162	T S K	27 NOV 85
D	CO62736	M A M	15 MAR 88
E	CO61043	B G S	16 SEP 88
F	CO72580	D A W	20 AUG 92
G	CO75625	J D B	14 JULY 93
H	CO76375	W E S	31 AUG 93
J	CO94122	T S M	12 MAR 99

REVISIONS

15 MAR 88

16 SEP 88

20 AUG 92

14 JULY 93

31 AUG 93

12 MAR 99

14 FEB 63

14 FEB 63