

# MICRO SWITCH

FREEMONT ILLINOIS, U.S.A.  
A DIVISION OF HONEYWELL  
FED. MFG. CODE 91929

## SWITCH - BASIC

CATALOG LISTING

14XE17-T

14XE17-T

REPLACES

RELEASE NO. PR-10524

M

DRAWING NUMBER

3

ISSUE

3

CHECK

REVISIONS

A	OBS DWG CO-79135
	CSL 26 SEP 94
B	REINST PR-21552
	DLT 2 MAR 95

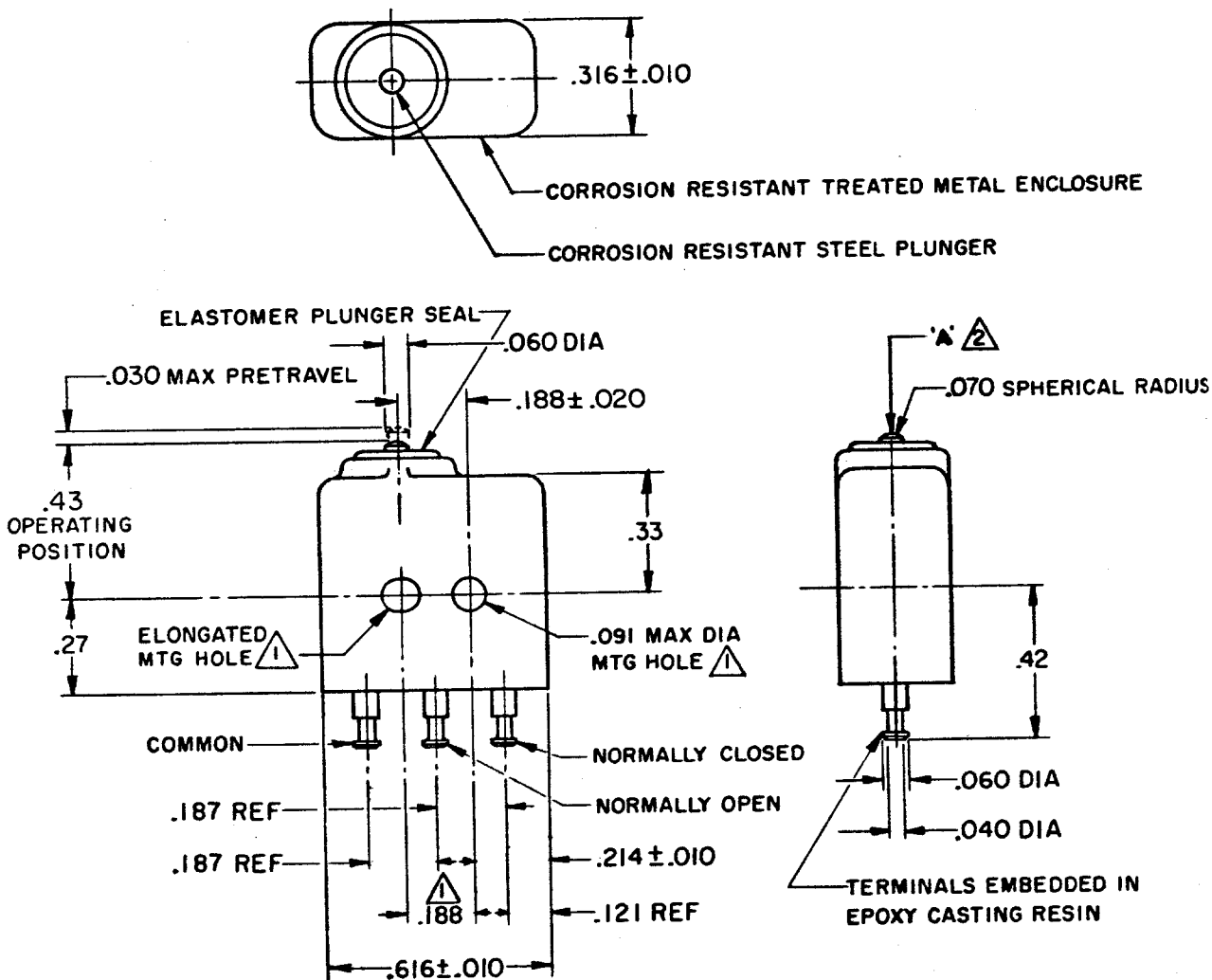
CHECK

CHECK

CHECK

CHECK

FO-52848-A



NOTES

- 1 MOUNTING HOLES WILL ACCEPT  $.087$  MAX DIA PINS OR SCREWS ON  $.188 \pm .002$  CENTERS
- 2 ACTUATION IN LINE WITH ARROW "A" IS RECOMMENDED
- 3 FOR USE IN TEMPERATURE RANGE FROM  $-65^{\circ}\text{F}$  TO  $+300^{\circ}\text{F}$
- 4 GOLD CONTACT SWITCH

THIS DRAWING COVERS A PROPRIETARY ITEM AND IS THE PROPERTY OF MICRO SWITCH, A DIVISION OF HONEYWELL. THIS DRAWING IS NOT TO BE COPIED OR USED WITHOUT THE APPROVAL OF MICRO SWITCH.

THIRD ANGLE PROJECTION

CHARACTERISTICS

OPERATING FORCE ----- 9 OZ MAX  
RELEASE FORCE ----- 2 OZ MIN  
PRETRAVEL ----- .004 MIN  
DIFFERENTIAL TRAVEL ----- .005 MAX  
OVERTRAVEL ----- .004 MIN

ELECTRICAL DATA

CONTACT ARRANGEMENT  
S P D T  
**28 VOLTS DC RATING**  
INDUCTIVE ----- SEA LEVEL --- 1/2 AMP  
50,000 FT --- 1/2 AMP  
RESISTIVE ----- SEA LEVEL --- 1 AMP  
30,000 FT --- 1 AMP  
MAXIMUM INRUSH ----- 2 AMP

SCALE 2:1

DO NOT SCALE PRINT

TOLERANCES  
APPLY TO DESIGN UNITS. CONVERSIONS ARE ONLY FOR REFERENCE. UNLESS NOTED, TOLERANCES ARE ±

	DES. UNITS	TOL. mm/in	DIM. in	TOL. mm/in
NO PLACES	X	1/64	X	0.01
ONE PLACE	X,X	0.4/0.016	X,X	0.38/0.015
TWO PLACES	X,XX	0.15/0.008	X,XX	0.13/0.008
THREE PLACES	X,XXX		X,XXX	
ANGLES				

DESIGN UNITS  SI METRIC  US CUSTOMARY

WEIGHT .16 OZ MAX

2 SEPT 81 CHECK CEB 2 SEPT 81 CHECK

DRAWN