

Honeywell Sensing and Control

Search



1TP1-6 (Home : Products : Switches » MICRO SWITCH™ Rocker Switches » Power-duty Rocker Switches » TP)

narrow your search

Products

- Controls Monitoring and Lighting (352)
- Machine Safety (1701)
- Sensors (6224)
- Switches (9749)
- Wireless (39)

Technology

- Control and Instrumentation (1052)
- Electromechanical (9301)
- Magnetic (541)
- Optical/Infrared (1042)
- Thick Film (1764)
- More...

new products

New Wireless Products

Go farther. Work smarter. Explore new possibilities. Just by cutting the cord and making the switch.



Wireless Web Site WGLA and WPMM XYR6000™

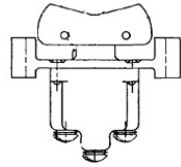
find out more

white papers

- Wireless Switches Offer Unlimited Benefit
- Basic Switches Are Not Created Equal
- Applying Precision Switches
- Sensors for Medical Devices
- New Ways to Measure Torque
- Choosing Safety Switches
- Specifying Hour Meters

Need help?

Click here to contact us



TP Series Rocker Switch, 1 pole, 2 position, Screw terminal, Flush Panel Mounting

Actual product appearance may vary.

Sales & Service

Distributor Inventory

Overview Specs Documentation Application Notes

Product Specifications

Product Type	MICRO SWITCH™ Rocker												
Contact Type	Silver Cadmium Oxide Contacts												
Circuitry	SPST												
Action	2 position												
Circuitry/Operating action	<table border="0"> <tr> <td>Keyway</td> <td>Opposite</td> </tr> <tr> <td>Momentary</td> <td>Keyway</td> </tr> <tr> <td>Position</td> <td>Position</td> </tr> <tr> <td></td> <td></td> </tr> <tr> <td>1 2</td> <td>1 2</td> </tr> <tr> <td>ON</td> <td>OFF</td> </tr> </table>	Keyway	Opposite	Momentary	Keyway	Position	Position			1 2	1 2	ON	OFF
Keyway	Opposite												
Momentary	Keyway												
Position	Position												
1 2	1 2												
ON	OFF												
Mounting	Flush Panel												
Lamp Type	Translucent												
Termination	Screw												
Ampere/Voltage Range (Resistive Load)	0.75 A at 115 Vdc, 0.5 A at 250 Vdc, 0.5 A to 15 A at 0.5 Vdc to 28 Vdc, 0.5 A to 10 A at 0.5 Vac to 7 Vac												
LED/Lamp/Neon Voltage	L192: 10 A-125, 250, 277 Vac; 1/4 Hp-125 Vac; 1/2 Hp-250, 277 Vac; 3 A-125 Vac "L"												
Comment	Silver cadmium oxide contacts												
Availability	Global												
UNSPSC Code	302119												
UNSPSC Commodity	302119 Switches and controls and relays												
Series Name	TP												

contacts

- Customer Service
- Technical Support
- Global Sales & Service
- View Site Demo
- Site Comments?

meet dr. larry

VIDEO - Dr. Larry Goldstein explains our newest and best technologies.



Meet Dr. Larry

my links

- Login to iCOM
- Login to Rep/AD Portal
- Login to Digital University

News Center

HONEYWELL ANNOUNCES ADDITION TO RELIALIGN™ RESIDENTIAL DOOR INTERLOCK SWITCHES THAT FEATURE RUGGED, PLASTIC HOUSING

HONEYWELL RELEASES UNLIMITED POTENTIAL WITH NEW LIMITLESS™ WIRELESS SWITCHES

HONEYWELL'S XYR6000 WIRELESS POSITION SENSOR ENABLES MONITORING IN HAZARDOUS AREAS AND REMOTE LOCATIONS

MICRO SWITCH Anniversary site