

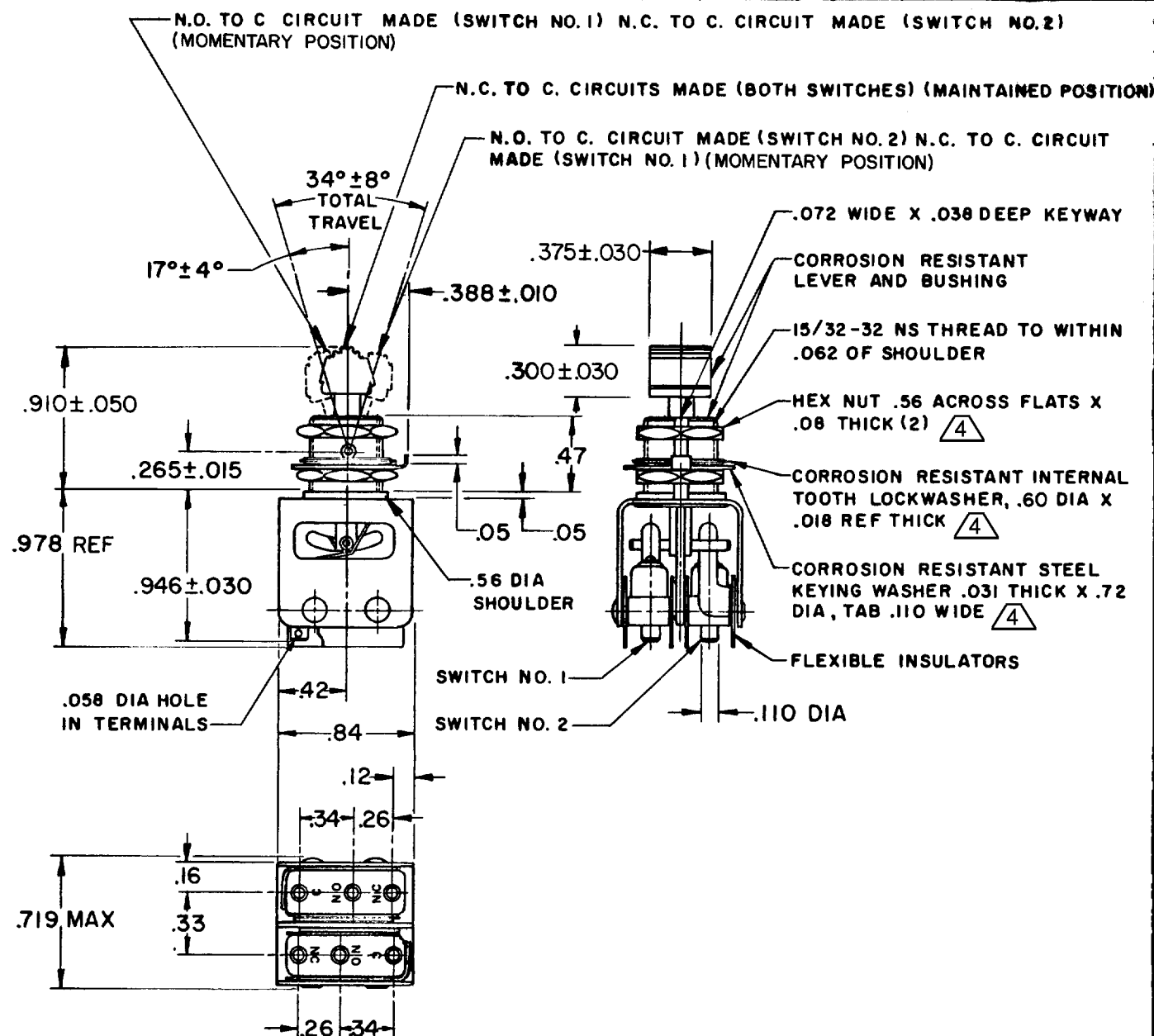
# MICRO SWITCH

FREEMONT ILLINOIS, U.S.A  
A DIVISION OF HONEYWELL  
FED. MFG. CODE 91929

# ASSEMBLY- TOGGLE SWITCH

CATALOG LISTING  
**13AT280**

CATALOG LISTING  
**13AT280**  
 PAGE 1 OF 1  
 RELEASE NO. PR-4513  
 REPLACES  
 M  
 ISSUE 7  
 CHECK  
 REVISIONS  
 A NEW DWG PR-4513  
 15 OCT 74  
 B CO 50566-B WJM MAY 82  
 C 0052725 R J H 24 MAY 83  
 D 0056281 G J W 28 SEP 85  
 E CO66089  
 DAW 20 FEB 91  
 F 205419 CSL 24 APR 02  
 CHECK  
 DRAWN  
 RASTER  
 FO-52848-A  
 K P K15 OCT 74 CHECK

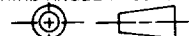


## NOTES

- 1 - UNIT INCLUDES CAT. LISTING 21SM284 (MS25085-1) BASIC SWITCH (2)
- 2 - TERMINALS ARE PLATED FOR SOLDERING
- 3 - KNOB PORTION OF TOGGLE LEVER BLACK ANODIZED
- 4 - HARDWARE FURNISHED ASSEMBLED WITH SWITCH OR IN PACKET PER MIL-PRF-8805
- 5 - REPLACEMENT MOUNTING HARDWARE PACKET 15PA312-AT

THIS DRAWING COVERS A PROPRIETARY ITEM AND IS THE PROPERTY OF MICRO SWITCH, A DIVISION OF HONEYWELL. THIS DRAWING IS NOT TO BE COPIED OR USED WITHOUT THE APPROVAL OF MICRO SWITCH.

THIRD ANGLE PROJECTION



## CHARACTERISTICS

## ELECTRICAL DATA

SCALE FULL

CONTACT ARRANGEMENT  
S P D T (2)

DO NOT SCALE PRINT

250 VAC ----- 5 AMP

TOLERANCES  
APPLY TO DESIGN UNITS. CONVERSIONS ARE ONLY FOR REFERENCE. UNLESS NOTED, TOLERANCES ARE ±

30 VOLTS DC RATING

INDUCTIVE	SEA LEVEL	3 AMP
	50,000 FT	2.5 AMP
RESISTIVE	SEA LEVEL	5 AMP
	50,000 FT	5 AMP
MAXIMUM INRUSH		24 AMP

DIM.	TOL.	DIM.	TOL.
mm	mm/in	in	mm/in
	1/04		
NO PLACES	X	X	0.87/03
ONE PLACE	X,X	X,X	0.387/015
TWO PLACES	X,XX	X,XXX	0.137/005
THREE PLACES	X,XXX		
ANGLES			

SI METRIC

US CUSTOMARY

DESIGN UNITS

WEIGHT