

MICRO SWITCH

FREEPORT ILLINOIS, U S A
A DIVISION OF HONEYWELL

FED. MFG. CODE 91928

SWITCH - TOGGLE

CATALOG LISTING
12TS95-70

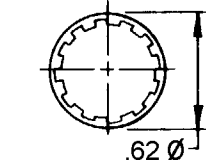
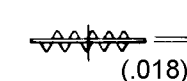
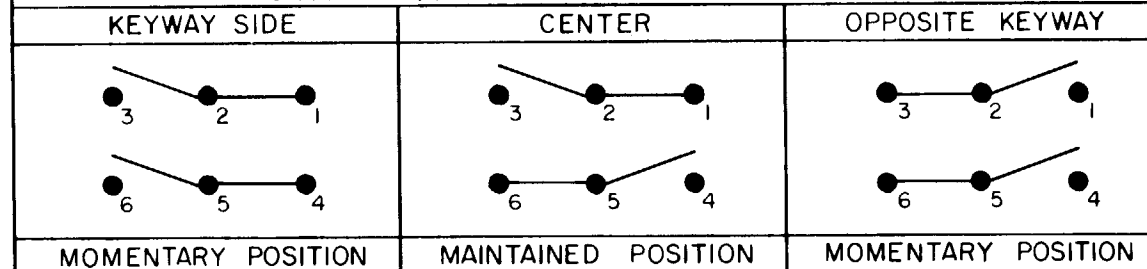
ELECTRICAL DATA

L312
10A 277 VAC, 20A 125 VAC
1 1/2 HP 125, 250 VAC

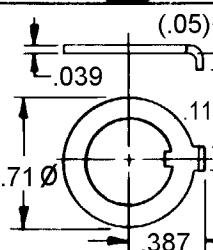


THIS DRAWING COVERS A PROPRIETARY ITEM AND IS THE PROPERTY OF MICRO SWITCH, A DIVISION OF HONEYWELL. THIS DRAWING IS NOT TO BE COPIED OR USED WITHOUT THE APPROVAL OF MICRO SWITCH.

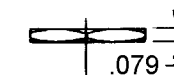
CIRCUIT MADE WITH TOGGLE LEVER IN



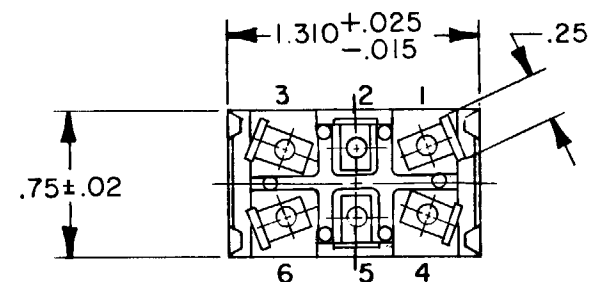
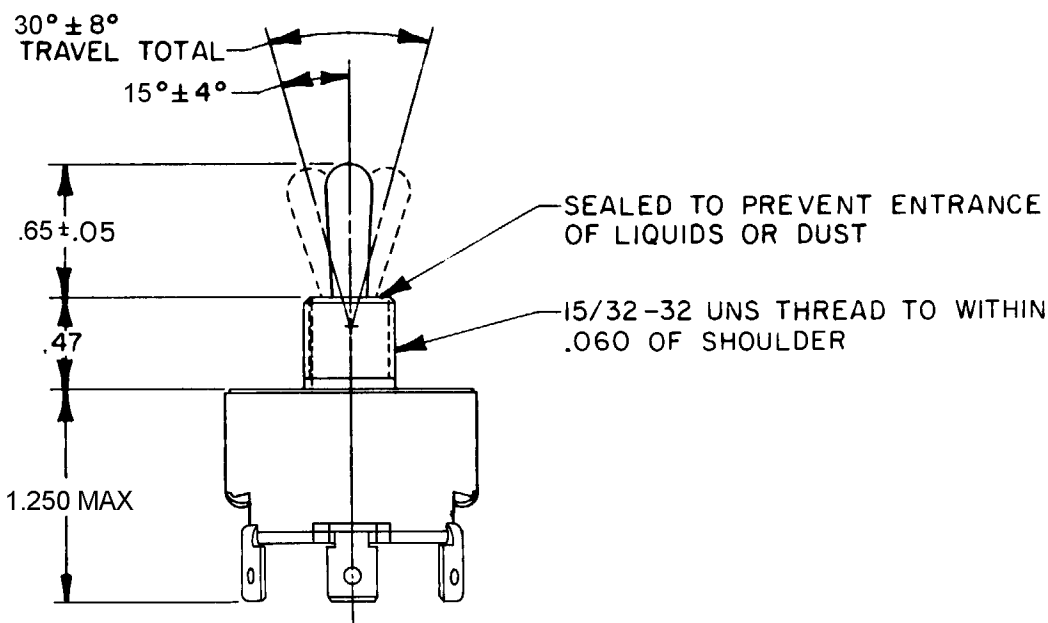
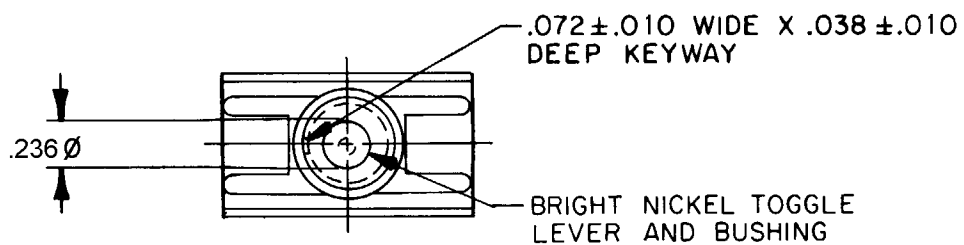
LOCKWASHER



LOCKING RING



2X HEX NUT

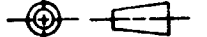


NOTES

- 1 - FURNISHED UNASSEMBLED
- 2 - CIRCUIT DESIGNATION AND MICRO SWITCH CAT. LISTING STAMPED ON SIDE OF SWITCH
- 3 - SWITCH TERMINALS MAY BE USED WITH AMP RECEPTACLE NO. 41194 (OR EQUIVALENT)
- 4 - VISUAL DIFFERENCES IN TERMINAL SHAPES AND PLATING POSSIBLE

12TS95-70
 PAGE 1 OF 1
 DRAWING NUMBER
 ISSUE 6
 REVISIONS
 A C080402 JALA 11 APR 95
 B C093667 JAF 26 JAN 99
 C 0001107 KED 11AUG03
 CHECK C E 3
 APR 12 82
 RASTER
 DRAWN
 C J H

THIRD ANGLE PROJECTION



SCALE FULL

DO NOT SCALE PRINT

TOLERANCES

APPLY TO DESIGN UNITS. CONVERSIONS ARE ONLY FOR REFERENCE. UNLESS NOTED, TOLERANCES ARE ±

	DIM.	TOL.	DIM.	TOL.
	in	mm/in	in	mm/in
NO PLACES	X	17/99	X X	0.01/03
ONE PLACE	X X	0.41/018	X X X	0.38/015
TWO PLACES	X X X	0.15/008	X X X X	0.13/006
THREE PLACES	X X X X		X X X X X	
ANGLES				

DESIGN UNITS SI METRIC US CUSTOMARY

WEIGHT .10 LB MAX