

MICRO SWITCH

FREELPORT ILLINOIS U.S.A.
A DIVISION OF HONEYWELL

FED. MFG. CODE 91929

SWITCH - ENCLOSED

CATALOG LISTING
125EN56-RB

125EN56-RB

M

DRAWING NUMBER

ISSUE

II

REPLACES

SR-12398

RELEASE NO.

CHECK

REVISIONS

A	CO 44351
C E B	
14	FEB 80
B	CO 47573
PART 4	
R J H	
14	AUG 80

CHECK

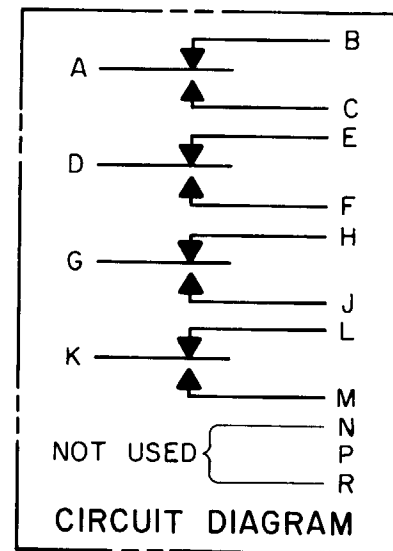
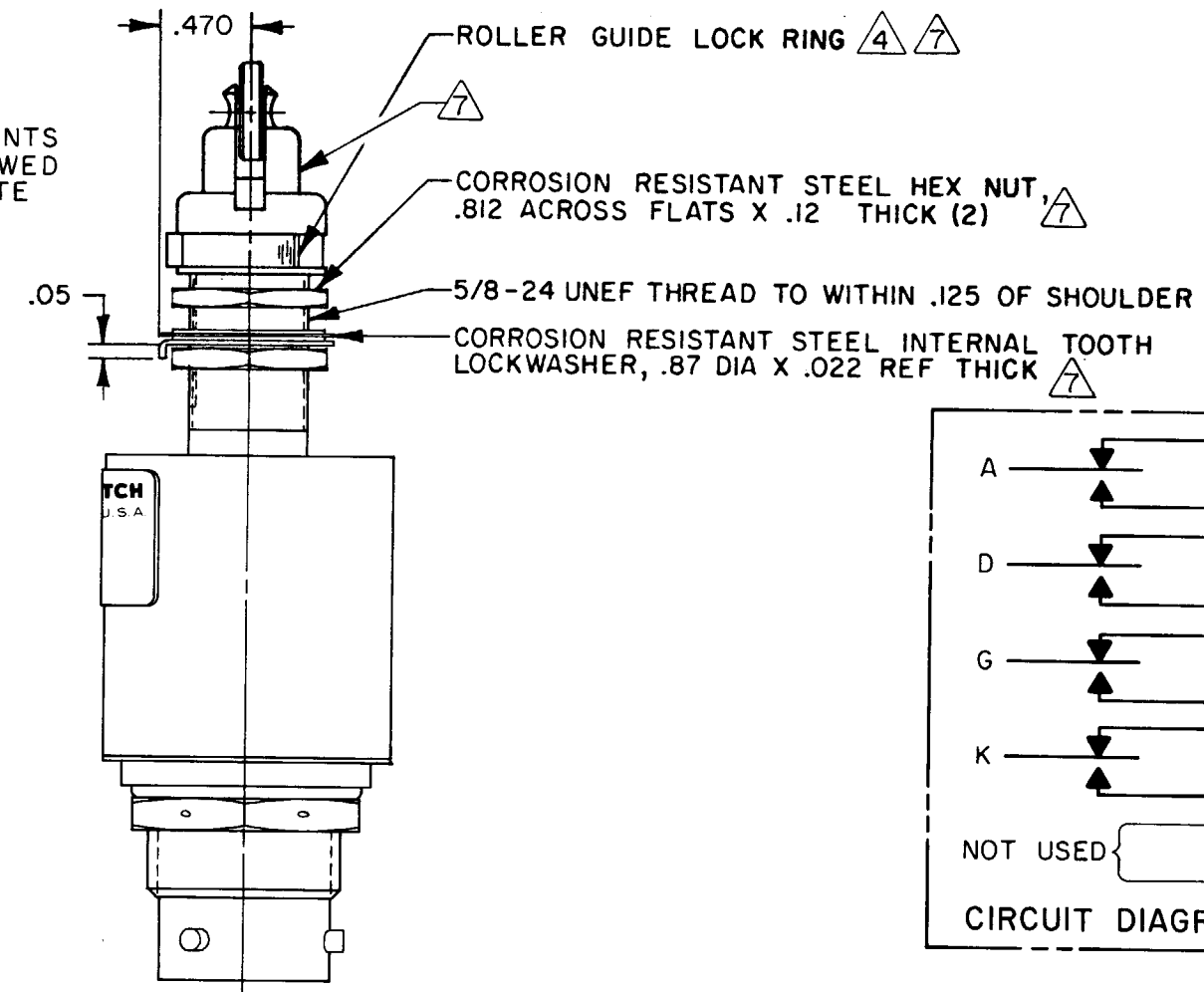
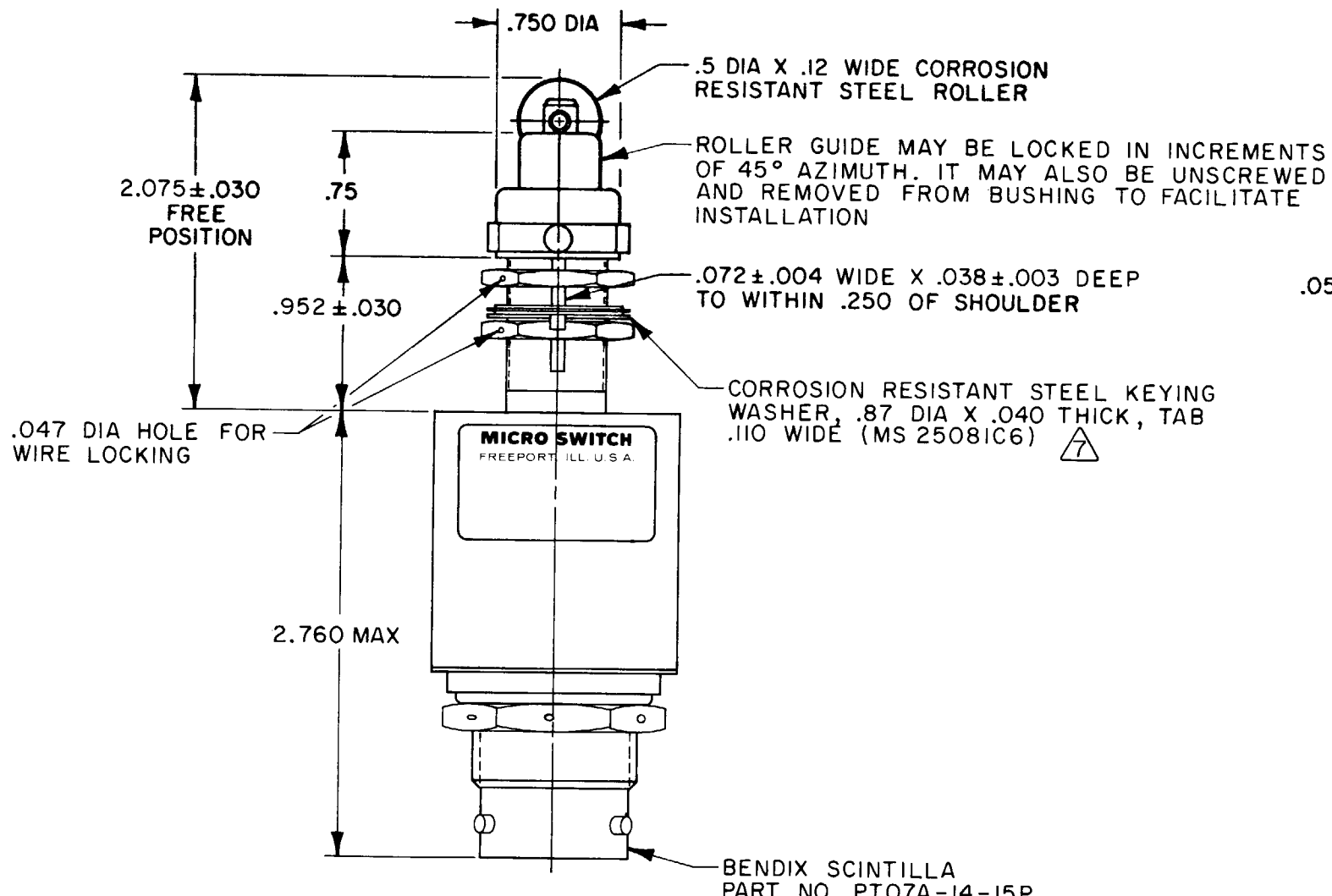
16 FEB 80

CEB

14 FEB 80

FO-5285 1-A

DRAWN



- NOTES**
- 1 - CORROSION RESISTANT STEEL ENCLOSURE
 - 2 - SWITCH SEALED PER MIL-S-8805 SYMBOL 4
 - 3 - CIRCUIT DIAGRAM AND CATALOG LISTING ARE SHOWN ON NAMEPLATE
 - 4 - TO ADJUST ROLLER DIRECTION REMOVE ROLLER GUIDE LOCK RING SCREW ROLLER GUIDE DOWN AS FAR AS POSSIBLE, THEN UNSCREW TO DESIRED DIRECTION. SECURE BY REPLACING ROLLER GUIDE LOCK RING
 - 5 - COINCIDENCE OF OPERATING AND RELEASING POINTS: .010 OF PLUNGER TRAVEL
 - 6 - NOTED ELECTRICAL RATINGS APPLY AS SPECIFIED IN MIL-S-8805/40-1 UP TO 185°F
 - 7 - HARDWARE MAY BE PACKAGED UNASSEMBLED PER MIL-S-8805

THIS DRAWING COVERS A PROPRIETARY ITEM AND IS THE PROPERTY OF MICRO SWITCH, A DIVISION OF HONEYWELL. THIS DRAWING IS NOT TO BE COPIED OR USED WITHOUT THE APPROVAL OF MICRO SWITCH		THIRD ANGLE PROJECTION	SCALE FULL
CHARACTERISTICS		DO NOT SCALE PRINT	
OPERATING FORCE-----6-12 LB	ELECTRICAL DATA	TOLERANCES	
FREE OVERTRAVEL FORCE-----30 LB MAX	CONTACT ARRANGEMENT	APPLY TO DESIGN UNITS. CONVERSIONS ARE ONLY FOR REFERENCE. UNLESS NOTED, TOLERANCES ARE:	
RELEASE FORCE-----4 LB MIN	S P D T (4)	DIM. TOL. DIM. TOL.	
PRETRAVEL-----.040 MAX	LOAD	NO PLACES	mm/in in
DIFFERENTIAL TRAVEL-----.030 MAX	RES	ONE PLACE	X .04
OVERTRAVEL-----.250 MIN	IND	TWO PLACES	X,XX 0.4/.016
	MOTOR	THREE PLACES	X,XXX 0.15/.006
	LAMP	ANGLES	X,XXX 0.8/.03
			X,XXX 0.38/.015
			X,XXX 0.13/.005
		DESIGN UNITS	SI METRIC <input type="checkbox"/> U.S. CUSTOMARY <input checked="" type="checkbox"/>
		RAW MATERIAL-COMMERCIAL STANDARD MICRO SWITCH STANDARDS APPLY	
		DIMENSIONS ARE TO BE MET BEFORE PROTECTIVE COATINGS ARE APPLIED	
		WEIGHT	8 OZ