

HONEYWELL
PART NUMBER
122SM44-T2
PRODUCT CODE
TYQ4480

| REV | DOCUMENT | CHANGED BY | CHECK |
|-----|----------|-------------|-------|
| 8 | 0038225 | PRS 04APR08 | BLR |

B

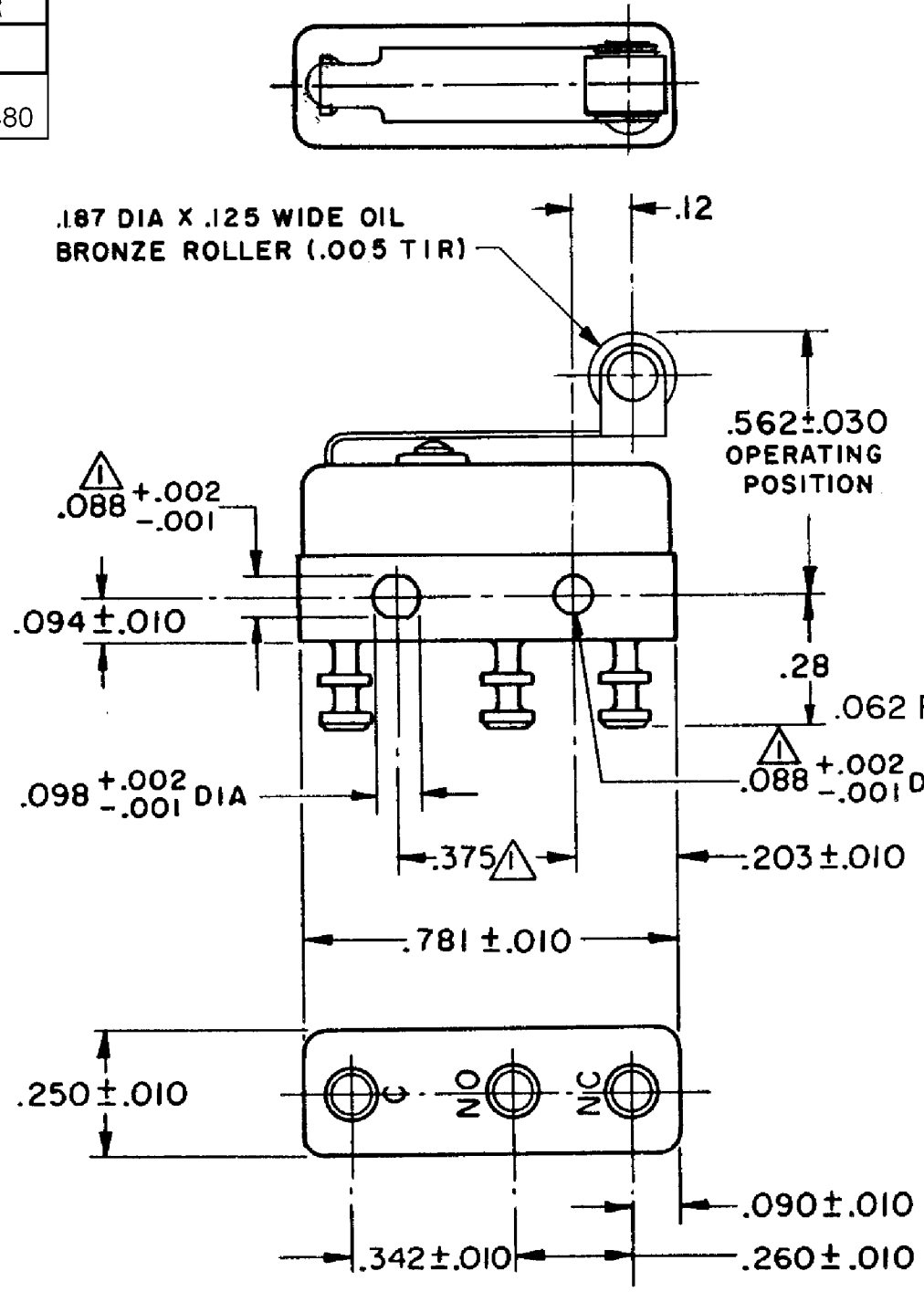
B

A

A

A

A



NOTES

- △** - MOUNTING HOLES WILL ACCEPT PINS OR SCREWS OF .087 MAX DIA ON .375 ± .002 CENTERS
- 2** - TERMINALS ARE PLATED FOR SOLDERING
- 3** - MATING CONTACT SURFACES ARE 24K SOLID GOLD OVERLAY

| | |
|-------------|-----------|
| RELEASE NO. | PR - 1352 |
| REPLACES | - |

| CHARACTERISTICS | |
|---------------------|----------|
| OPERATING FORCE | 7 OZ MAX |
| RELEASE FORCE | 2 OZ MIN |
| PRETRAVEL | .219 MAX |
| DIFFERENTIAL TRAVEL | .025 MAX |
| OVERTRAVEL | .030 MIN |

| ELECTRICAL DATA | | |
|-----------------------------|-----------|--------------------|
| CONTACT ARRANGEMENT SPDT | | |
| 30 VOLTS DC RATING | | |
| | SEA LEVEL | 50,000 FT |
| INDUCTIVE | 1/2 AMP | 1/2 AMP |
| RESISTIVE | 1 AMP | 1 AMP |
| MAXIMUM INRUSH 2 AMP | | |
| APPROVALS | KEMA, CE | 1A, 250V ~ T85 1E4 |
| | UL, CSA | 1A, 125 VAC ~ |

| DESIGN UNITS: INCH | |
|--------------------------|---------|
| TOLERANCES UNLESS NOTED: | |
| NO PLACE | X ± |
| ONE PLACE | .X ± |
| TWO PLACE | .XX ± |
| THREE PLACE | .XXX ± |
| FOUR PLACE | .XXXX ± |
| ANGLES | ± |
| THIRD ANGLE PROJECTION | |

| | | |
|--|----|-----------|
| DRAWN | VK | 30 OCT 07 |
| CHECK | RJ | 30 OCT 07 |
| THIS DRAWING COVERS A PROPRIETARY ITEM AND IS THE PROPERTY OF HONEYWELL. THIS DRAWING IS NOT TO BE COPIED OR USED WITHOUT THE PERMISSION OF HONEYWELL. | | |
| INTERPRET PER ANSI Y14.5M-1982 OTHER HONEYWELL ENGINEERING STANDARDS MAY APPLY | | |

| | | | |
|--------------------------------|----------|--------------------|--------------|
| Honeywell | | | |
| TITLE SWITCH - BASIC | | | |
| SIZE | TYPE | DRAWING NAME | REV |
| B | I | 122SM44-T2 | 8 |
| SCALE | - | WEIGHT .008 LB MAX | SHEET 1 OF 1 |