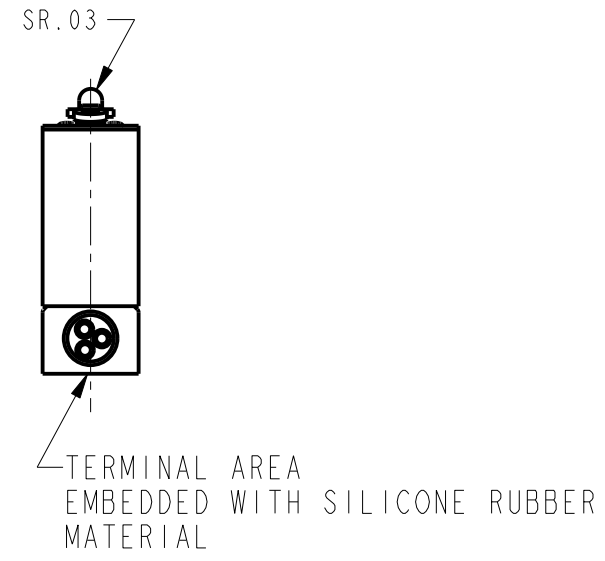
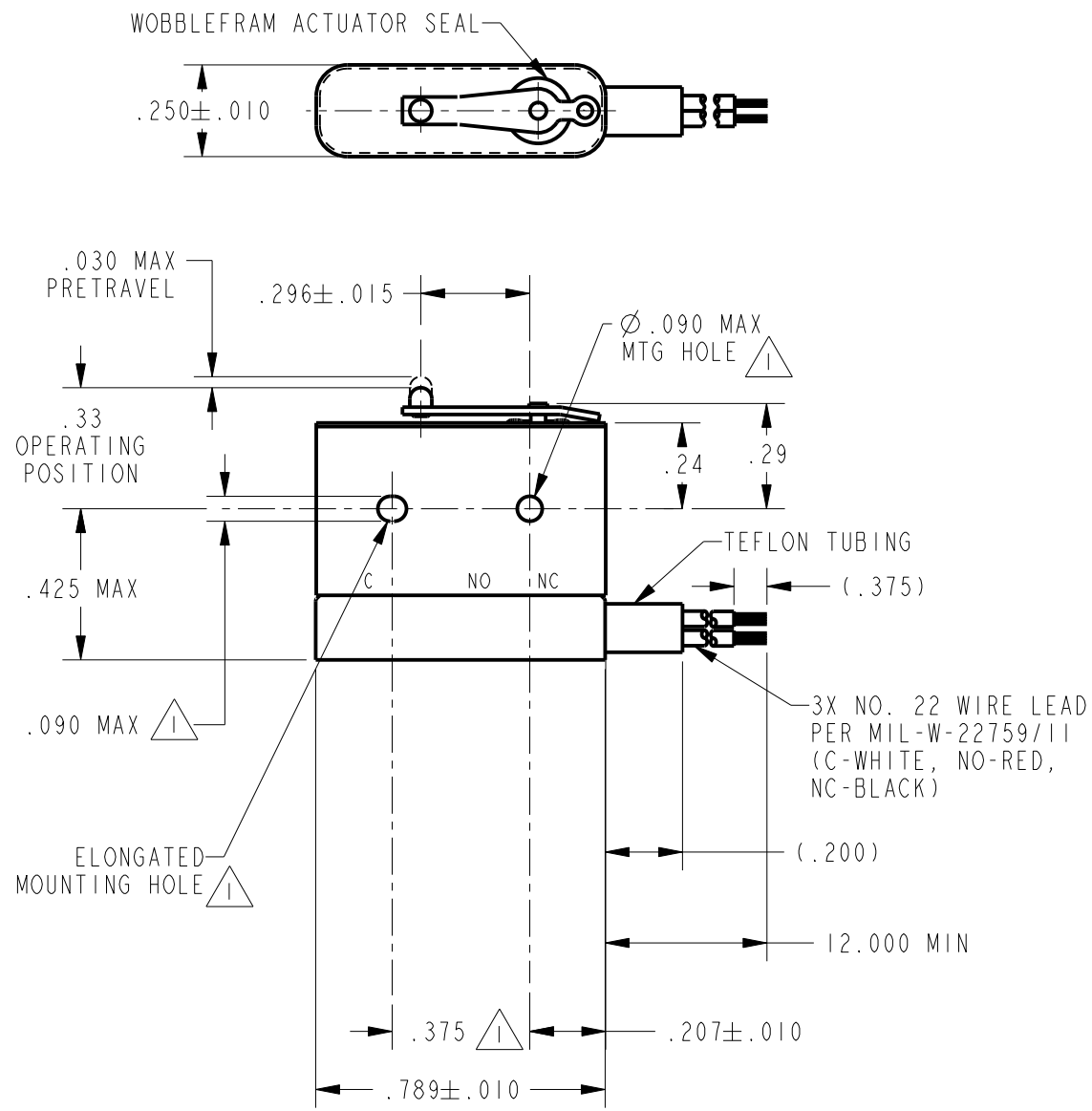


HONEYWELL
PART NUMBER
120HM23-1

| REV | DOCUMENT | CHANGED BY | CHECK |
|-----|----------|------------|-------|
| A | 0016107 | BM 14OCT05 | VA |

| CHARACTERISTICS | |
|---------------------|----------|
| OPERATING FORCE | 7 OZ MAX |
| RELEASE FORCE | 1 OZ MAX |
| DIFFERENTIAL TRAVEL | .006 MAX |
| OVERTRAVEL | .003 MIN |

| ELECTRICAL DATA | | |
|--------------------------------|-----------|---------|
| CONTACT ARRANGEMENT S P D T | | |
| 28 VOLTS DC RATING | | |
| INDUCTIVE | SEA LEVEL | 1/4 AMP |
| | 70,000 FT | 1/4 AMP |
| RESISTIVE | SEA LEVEL | 1/2 AMP |
| | 70,000 FT | 1/2 AMP |



- NOTES
- MOUNTING HOLES WILL ACCEPT PINS OR SCREWS OF $\phi .087$ MAX ON $.375 \pm .002$ CENTERS
 - FOR USE IN TEMPERATURE RANGE -85°F TO $+392^{\circ}\text{F}$ (DOWN TO -300°F IF WIRE LEADS ARE NOT FLEXED)
 - HERMETICALLY SEALED (METAL-TO-METAL, GLASS-TO-METAL)
 - ALL EXPOSED PARTS ARE OF CORROSION RESISTANT MATERIALS
 - WEIGHT OF SWITCH ONLY IS 0.014 LB MAX, WEIGHT OF CONDUCTOR GROUP ONLY IS 0.14 LB MAX PER FOOT
 - DO NOT: APPLY MORE THAN 1 1/2 INCH-LBS OF TORQUE WHEN TIGHTENING MOUNTING SCREWS
 - 24K GOLD BIFURCATED MOVABLE CONTACT
 - GOLD ALLOY STATIONARY CONTACTS
 - MECHANICAL LIFE 100,000 OPERATIONS (95% SURVIVAL), ELECTRICAL LIFE 25,000 OPERATIONS AT FULL RATED LOAD

| | | | | | | | |
|---|-------|-----|-----------|-------------------------------|----------|------------------|--------------|
| DESIGN UNITS: INCH TOLERANCES UNLESS NOTED: NO PLACE X ± ONE PLACE .X ± TWO PLACE .XX ± THREE PLACE .XXX ± FOUR PLACE .XXXX ± ANGLES X ± | DRAWN | TSG | 29 AUG 05 | Honeywell | | | |
| | CHECK | - | - | | | | |
| THIS DRAWING COVERS A PROPRIETARY ITEM AND IS THE PROPERTY OF HONEYWELL. THIS DRAWING IS NOT TO BE COPIED OR USED WITHOUT THE PERMISSION OF HONEYWELL. | | | | TITLE SWITCH, BASIC | | | |
| INTERPRET PER ANSI Y14.5M-1982 OTHER HONEYWELL ENGINEERING STANDARDS MAY APPLY | | | | SIZE | TYPE | DRAWING NAME | REV |
| THIRD ANGLE PROJECTION | | | | B | I | 120HM23-1 | A |
| | | | | Pro/ENGINEER | 2D | SCALE | SHEET 1 OF 1 |