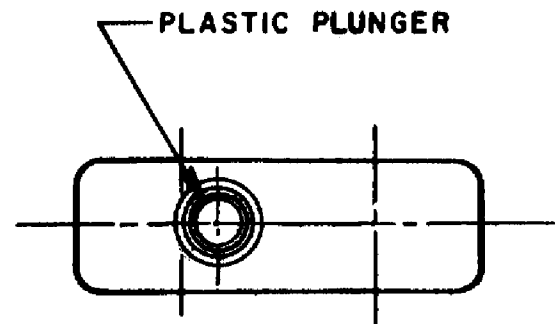
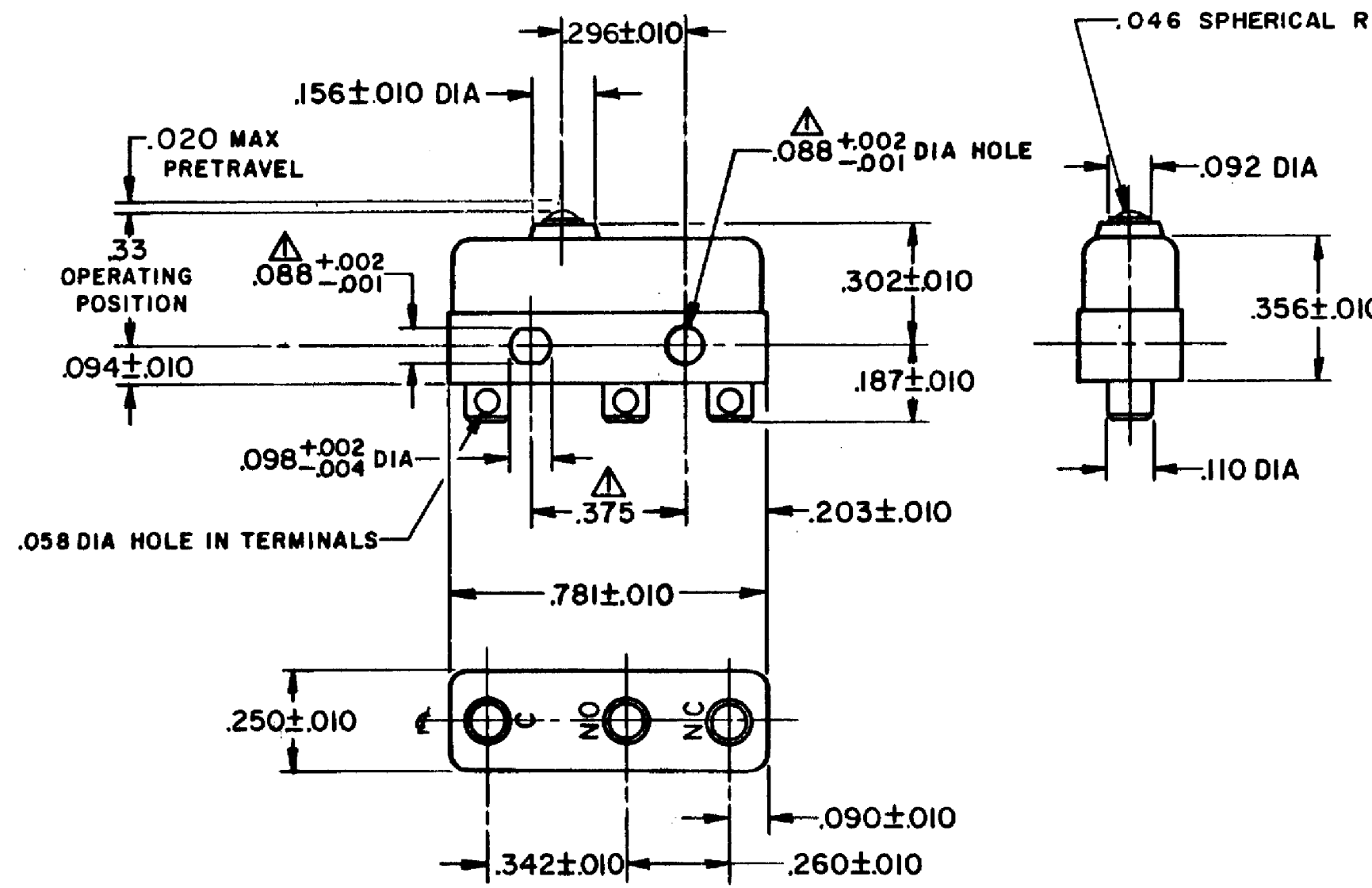


HONEYWELL PART NUMBER
11SM405
PRODUCT CODE
TWY0500

REV	DOCUMENT	CHANGED BY	CHECK
7	0038104	PK 23APR08	ASD



PLASTIC PLUNGER



NOTES

- ▲-MOUNTING HOLES WILL ACCEPT PINS OR SCREWS OF .087 MAX DIA ON .375 ± .002 CENTERS
- 2-TERMINALS ARE PLATED FOR SOLDERING
- 3-DEAD BREAK CONDITIONS
- A - MAX AMOUNT PERMISSIBLE --- .0002 IN.
- 4-SWITCH WILL WITHSTAND TEMPERATURE OF 250°F.

RELEASE NO.	SR - 10640
REPLACES	-

CHARACTERISTICS	
OPERATING FORCE	--- 3 1/2 OZ MAX
RELEASE FORCE	--- 1 OZ MIN
DIFFERENTIAL TRAVEL	--- .0005 - .0015
OVERTRAVEL	--- .005 MIN

ELECTRICAL DATA		
CONTACT ARRANGEMENT SPDT		
30 VOLTS DC RATING		
	SEA LEVEL	50,000 FT
INDUCTIVE	3 AMP	2.5 AMP
RESISTIVE	5 AMP	5 AMP
MAXIMUM INRUSH 24 AMP		
APPROVALS	KEMA, CE	5A, 250V ~ T85 1E4
	UL, CSA	5A, 250 VAC

DESIGN UNITS: INCH
TOLERANCES UNLESS NOTED:
NO PLACE X ±
ONE PLACE .X ±
TWO PLACE .XX ±
THREE PLACE .XXX ±
FOUR PLACE .XXXX ±
ANGLES ±
THIRD ANGLE PROJECTION

DRAWN	VK	27 NOV 07
CHECK	RJ	27 NOV 07
THIS DRAWING COVERS A PROPRIETARY ITEM AND IS THE PROPERTY OF HONEYWELL. THIS DRAWING IS NOT TO BE COPIED OR USED WITHOUT THE PERMISSION OF HONEYWELL.		
INTERPRET PER ANSI Y14.5M-1982 OTHER HONEYWELL ENGINEERING STANDARDS MAY APPLY		
RASTER		

Honeywell			
TITLE SWITCH - BASIC			
SIZE	TYPE	DRAWING NAME	REV
B	I	11SM405	7
SCALE	-	WEIGHT .006 LB MAX	SHEET 1 OF 1