

HONEYWELL
PART NUMBER

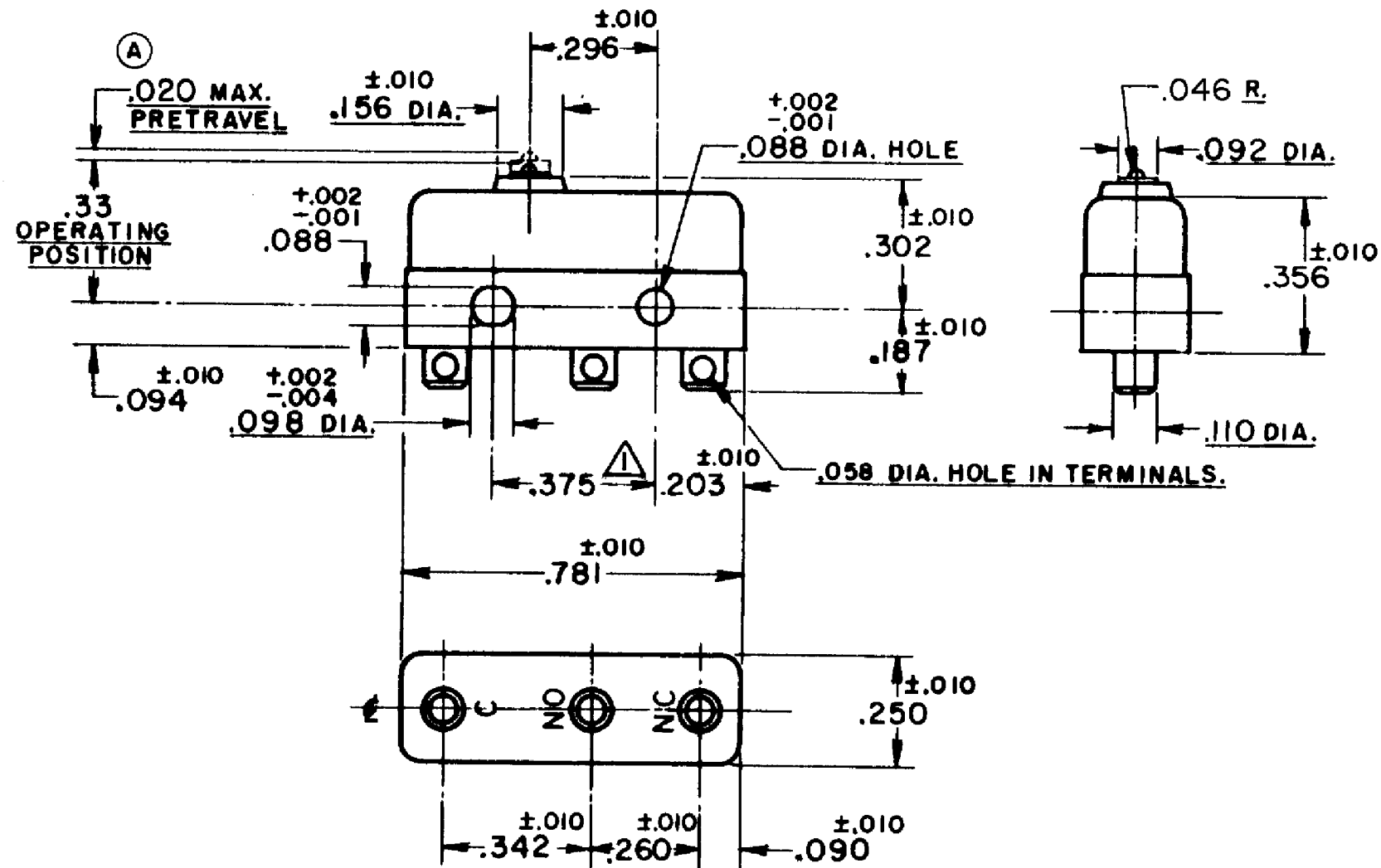
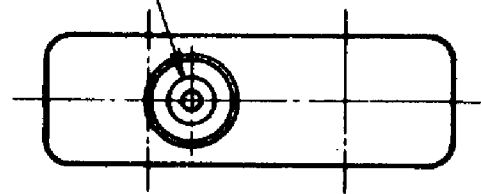
11SM144

PRODUCT CODE

TWV4400

REV	DOCUMENT	CHANGED BY	CHECK
9	0079444	MBH 13JUL11	CMH

PLASTIC PLUNGER.

**NOTE-**

- △ MOUNTING HOLES WILL ACCEPT PINS OR SCREWS OF .087 MAX. DIA. ON .375^{±.002} CENTERS.**
- 2- TERMINALS ARE PLATED FOR SOLDERING.**
- 3- SWITCH WILL WITHSTAND TEMPERATURE OF 250°F.**

RELEASE NO. SR - 7853

REPLACES -

CHARACTERISTICS

OPERATING FORCE - - - - 3 OZ MAX

RELEASE FORCE - - - - 1 OZ MIN

DIFFERENTIAL TRAVEL - - - .002 MAX

OVERTRAVEL - - - - .005 MIN

ELECTRICAL DATA

CONTACT ARRANGEMENT
SPDT

30 VOLTS DC RATING

	SEA LEVEL	50,000 FT
INDUCTIVE	3 AMP	2.5 AMP
RESISTIVE	5 AMP	5 AMP

MAXIMUM INRUSH 24 AMP

APPROVALS	KEMA, CE	5A, 250V ~ T85 1E4	CE
	UL, CSA	5A, 250 VAC	BRAND L4
	UL	5A, 30 VDC	BRAND L304

DESIGN UNITS: INCH

TOLERANCES UNLESS NOTED:

NO PLACE	X	±	-
ONE PLACE	.X	±	.030
TWO PLACE	.XX	±	.015
THREE PLACE	.XXX	±	.005
FOUR PLACE	.XXXX	±	-
ANGLES		±	-

THIRD ANGLE PROJECTION



DRAWN VK 27 NOV 07

CHECK RJ 27 NOV 07

THIS DRAWING COVERS A PROPRIETARY ITEM AND IS THE PROPERTY OF HONEYWELL. THIS DRAWING IS NOT TO BE COPIED OR USED WITHOUT THE PERMISSION OF HONEYWELL.

INTERPRET PER ANSI Y14.5M-1982 OTHER HONEYWELL ENGINEERING STANDARDS MAY APPLY

RASTER

Honeywell

TITLE

SWITCH - BASIC

SIZE	TYPE	DRAWING NAME	REV
B	I	11SM144	9
SCALE	-	WEIGHT .006 LB MAX	SHEET 1 OF 1