



SERIES 1550 - SINGLE AND DOUBLE-POLE ROCKER SWITCHES

TO 16 (4) A 250 V AC



PRODUCT FEATURES

- Inrush currents (capacitive) up to 100 A
- Two housing variants (with flange or lower lying)
- With mechanical forced opening
- Illuminated window with lens effect

ON REQUEST



- Other colors
- Other rocker labelings
- Other lamp variants
- Conformity IEC 60065 chap. 14.6
- Special rockers
- Cable assembly

Mechanical life endurance	5E4
Inrush current (capacitive)	100 A
Contact distance	≥ 3 mm
Contact resistance (new condition)	< 100 mOhm (1 A 12 V DC)
Insulation resistance (new condition)	> 100 MOhm (500 V DC)
Proof tracking	250 PTI
Protection type	IP 40
Ambient temperature	terminal side -20 °C ... +100 °C actuating side -20 °C ... +55 °C
Flammability	UL 94 V-2 UL 94 V-0 (product-dependent)
Glow wire test temperature	850 °C
Material actuator housing	PA PA
Plug force of the terminals	≤ 80 N
Approval marks	
Suitable for appliances of protection class II	



SERIES 1550 - SINGLE AND DOUBLE-POLE ROCKER SWITCHES

TO 16 (4) A 250 V AC

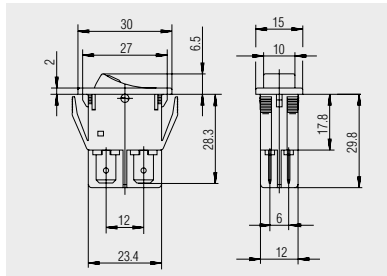
 single-pole 		Lighting voltage (V)	Actuator color / printing	Housing color	7 A 250 V AC 5E4	16 (4) A 250 V AC 5E4	16 (4) A 250 V AC 1E4	10 (4) A 250 V AC 5E4	10 (4) A 250 V AC 25E3	10 A 12 V DC	20 mA 250 V AC 5E4	20 A 250 V AC 2 HP	20 A 125 V AC 1 HP	16 A 250 V AC 2 HP	16 A 125 V AC 1 HP	Terminal type	Terminal description	Contact material	EN 60335 cap. 30 conform "G"	Miscellaneous	Stock version
ON / OFF switch (SPST)																					
1550.3102	230					○	○							○		U	6.3	Ag			
1550.3609	12								○							U	6.3	Ag		lower lying flange	
1551.3102						○	○							○	○	U	6.3	Ag	○		○
1551.3103						○	○							○	○	U	6.3	Ag			
1551.3106						○	○							○	○	U	6.3	Ag			
1551.2654										○						U		Au		approvals KEMA lower lying flange	
Normally closed contact (SPNC)																					
1581.1303					○									○	○	U	6.3	Ag	○	increased life endurance at a high electrical rating	
1551.1303						○	○							○	○	U	6.3	Ag			
Normally open contact (SPNO)																					
1551.3202						○	○							○	○	U	6.3	Ag			○
1551.3702						○	○							○	○	U	6.3	Ag		lower lying flange	

ROCKERSWITCHES
 PUSHBUTTON SWITCHES
 TOGGLE SWITCHES
 SLIDE SWITCHES
 ROTARY SWITCHES
 FOOT SWITCHES
 TACT AND KEY SWITCHES
 SMP-ACTION SWITCHES
 MICRO-SIGNAL SWITCHES
 SENSORS
 ECO
 PUSH N'DRIVE



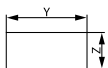
SERIES 1550 - SINGLE AND DOUBLE-POLE ROCKER SWITCHES

TO 16 (4) A 250 V AC



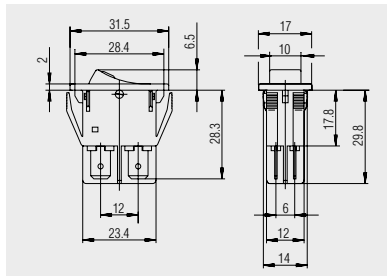
Basic types 1550 and 1555
single and double-pole

Quick-connect terminal 6.3 x 0.8



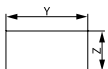
X = Wall thickness

x	y	z
0.8 ... 5.0	27.2 ^{+0.1}	12.2 ^{+0.2}



1555.8104
double-pole

Quick-connect terminal 6.3 x 0.8
cover frame 31.5 x 17 mm



X = Wall thickness

x	y	z
0.8 ... 5.0	28.6 ^{+0.1}	14 ^{+0.2}

ROCKER SWITCHES
PUSHBUTTON SWITCHES
TOGGLE SWITCHES
SLIDE SWITCHES
ROTARY SWITCHES
FOOT SWITCHES
TACT AND KEY SWITCHES
SNAP-ACTION SWITCHES
MICRO-SIGNAL SWITCHES
SENSORS
ECO
PUSH N' DRIVE

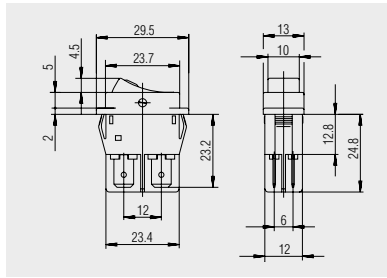


SERIES 1550 - SINGLE AND DOUBLE-POLE ROCKER SWITCHES

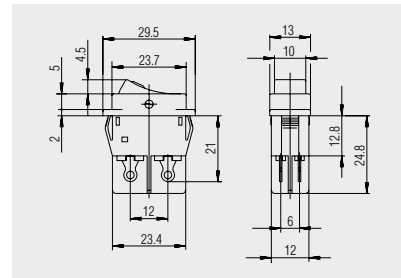
TO 16 (4) A 250 V AC



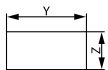
Basic types 1550 and 1555
lower lying flange
single and double-pole



Quick-connect terminal 6.3 x 0.8



Solder terminal

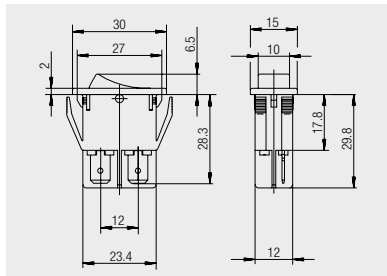


X = Wall thickness

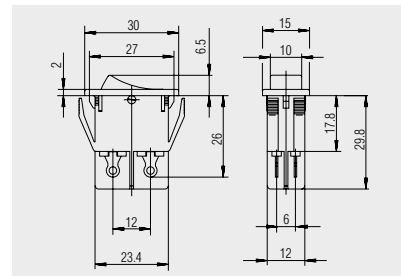
x	y	z
0.75 ... 1.25	26.2 ^{-0.1}	12.4 ^{+0.1}
2 ... 3	26.8 ^{-0.1}	12.4 ^{+0.1}
2 ... 3	26.8 ^{-0.1}	12.4 ^{+0.1}
1.25 ... 2	26.4 ^{-0.1}	12.4 ^{+0.1}



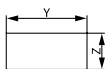
Basic type 1551 and 1552
single and double-pole



Quick-connect terminal 6.3 x 0.8



Solder terminal



X = Wall thickness

x	y	z
0.8 ... 5.0	27.2 ^{+0.1}	12.2 ^{+0.2}

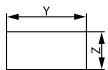


SERIES 1550 - SINGLE AND DOUBLE-POLE ROCKER SWITCHES

TO 16 (4) A 250 V AC

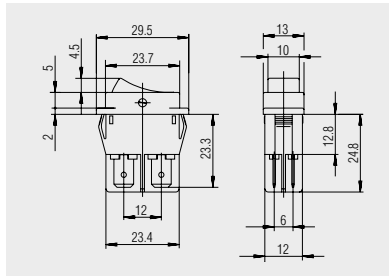


Basic types 1551 and 1552
lower lying flange
single and double-pole

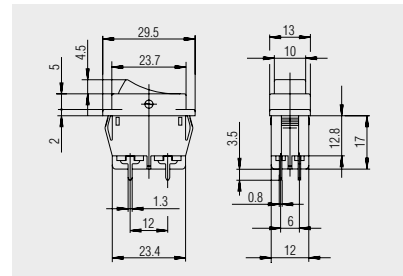


X = Wall thickness

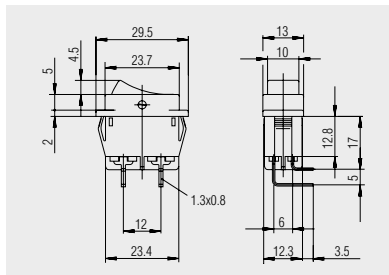
x	y	z
0.75 ... 1.25	26.2 ^{-0.1}	12.4 ^{+0.1}
1.25 ... 2	26.4 ^{-0.1}	12.4 ^{+0.1}
2 ... 3	26.8 ^{-0.1}	12.4 ^{+0.1}



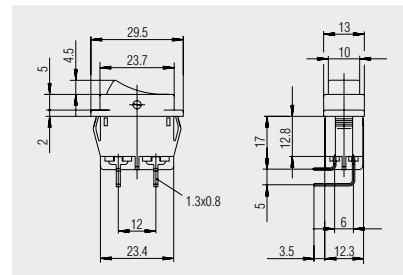
Quick-connect terminal 6.3 x 0.8



PCB terminal



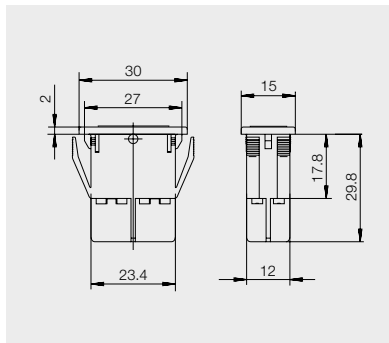
PCB terminal angled



PCB terminal angled mirror-inverted



Dummy piece
203.103.013



Dummy piece for series 1550 made of PA

Empfohlener Ausschnitt für Rastbefestigung
(Grat gegenüber Bestueckungsseite)

Wanddicke
wall thickness

Ausschnittlänge
length of cut-out

Ausschnittbreite
width of cut-out

recommended cut-out for snap-in fixing
(edge opposite to snap-in direction)

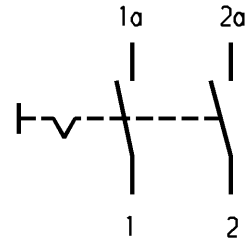
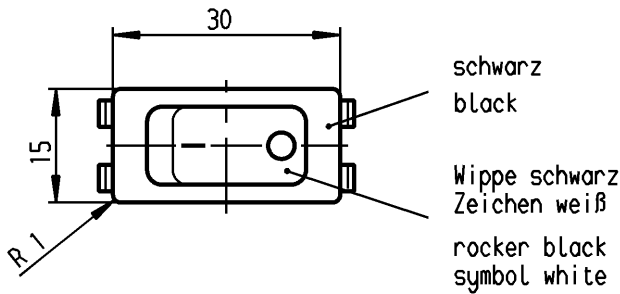
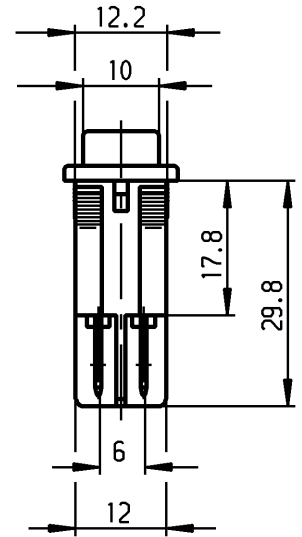
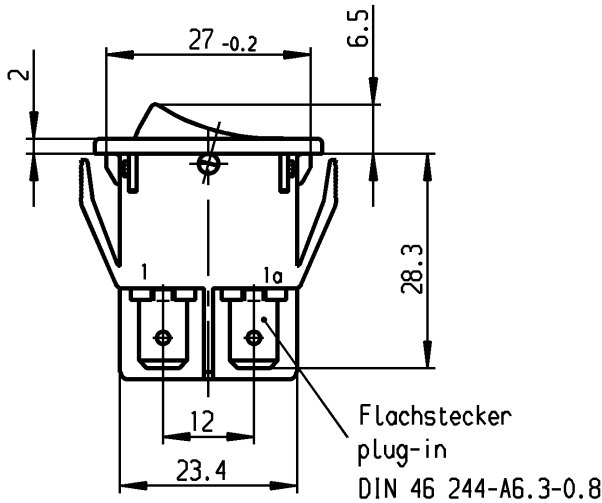
0.8 to / bis 5.0

27.2 ±0.1

12.2 ±0.2

VERTRAULICH-CONFIDENTIAL

Alle Rechte bei Marquardt, auch fuer den Fall von Schutzrechtsmeldungen. Jede Verfuegungsbefugnis, wie Kopier- und Weitergaberecht, bei uns.
This document is the exclusive property of Marquardt. Without our consent, it may not be reproduced or given to third parties.



Aufschrift
Marking



155..
16(4)/250~ T100/55 T100
10(4)/250~5E4
5/100A 250V~



16A 125-250V AC
1 HP 125V AC
2 HP 250V AC
R38

Herstellort/-jahr/-woche

nach DIN EN 60062

code of manufacture:

place/year/week acc. to DIN EN 60062

Ausschalter 2-polig

Fuer Gerate der Klasse II geeignet

DPST

suitable for appliances of class II

Schutzvermerk
nach DIN 34 beachten
COPYRIGHT RESERVED

Für Form und Lage FOR SHAPE AND LOC.	PROJECTION	Allgemeintoleranzen UNTOLERANCED DIMENSIONS			Pause COPY	Blatt SHEET 01	Typ K	Zeichn./DRAWING NO. 1552.3119	Index
		Abmasse und Nennmassbereiche Angaben in mm	Laengen LENGTH	Radien RADI					
0-6 ± 0.2	>6-15 ± 0.4	>15-30 ± 0.4	>30-70 ±	>70-120 ±	>120-200 ±	A4	Geraeteschalter Appliance Switch		
Für Winkel FOR ANGLE ± 2°	ALL DIMENSIONS ARE IN MILLIMETRES	0 10 20 30 mm			CAD Medusa		Z		
c	g	69572 04.10.10 hhe			gez./DRAWN BY 29.05.02 sig		MARQUARDT		
b	f	35129 27.02.03 wj			gepr./CHECKED BY sig		Marquardt, D-78604 Riethem-Weilheim		
a	e	33155 29.05.02 sig			Ersatz für/REPLACEMENT OF				
Ausg. ISSUE	Aenderung REVISION	gez. DRAWN BY	Ausg. ISSUE	Aenderung REVISION	gez. DRAWN BY				