

PLEASE CHECK WWW.MOLEX.COM FOR LATEST PART INFORMATION

Part Number: [0716294000](#)
Status: **Active**
Overview: [LFH™ Interconnect System](#)
Description: LFH™ Matrix 50 and 75 Docking Guide Sleeve for 1.02mm Panels

Documents:

[3D Model](#) [RoHS Certificate of Compliance \(PDF\)](#)
[Drawing \(PDF\)](#)

General

Product Family	I/O Connectors
Series	71629
Application	Board-to-Board, Wire-to-Board
Comments	Lead-in 1.27mm by 45 (alignment tolerance of 1.50mm radially) for docking
Component Type	Guide Sleeve
Material - Screw	Steel
MolexKits	Yes
Overview	LFH™ Interconnect System
Product Name	LFH™
Type	N/A
UPC	800754992992

Physical

Circuits (Loaded)	N/A
Keying to Mating Part	N/A
Lock to Mating Part	None
Material - Plating Mating	N/A
Net Weight	0.408/g
Orientation	N/A
PCB Retention	N/A
Packaging Type	Bag
Panel Mount	Yes
Pitch - Mating Interface	N/A
Polarized to Mating Part	N/A
Surface Mount Compatible (SMC)	N/A
Termination Interface: Style	N/A
Wire Size AWG	N/A

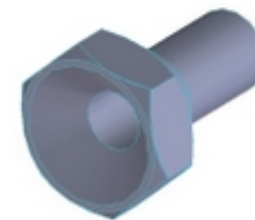
Electrical

Current - Maximum per Contact	N/A
Grounding to Panel	N/A

Material Info

Reference - Drawing Numbers

Sales Drawing	SDA-71629-****
---------------	----------------



Series image - Reference only

EU ELV

Not Relevant

EU RoHS

Compliant with Exemption 6(a)

REACH SVHC

Not Contained Per - ED/21/2016 (20 June 2016)

Halogen-Free

Status

Low-Halogen

Need more information on product environmental compliance?

Email productcompliance@molex.com
Please visit the [Contact Us](#) section for any non-product compliance questions.

China ROHS

ELV

50 Image

Not Relevant

Search Parts in this Series

[71629](#) Series

Use With

[70660](#) , [70665](#) , [70928](#) , [70929](#) , [71624](#) , [71626](#) , [71475](#) , [71478](#) , [71718](#)