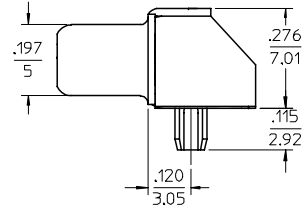
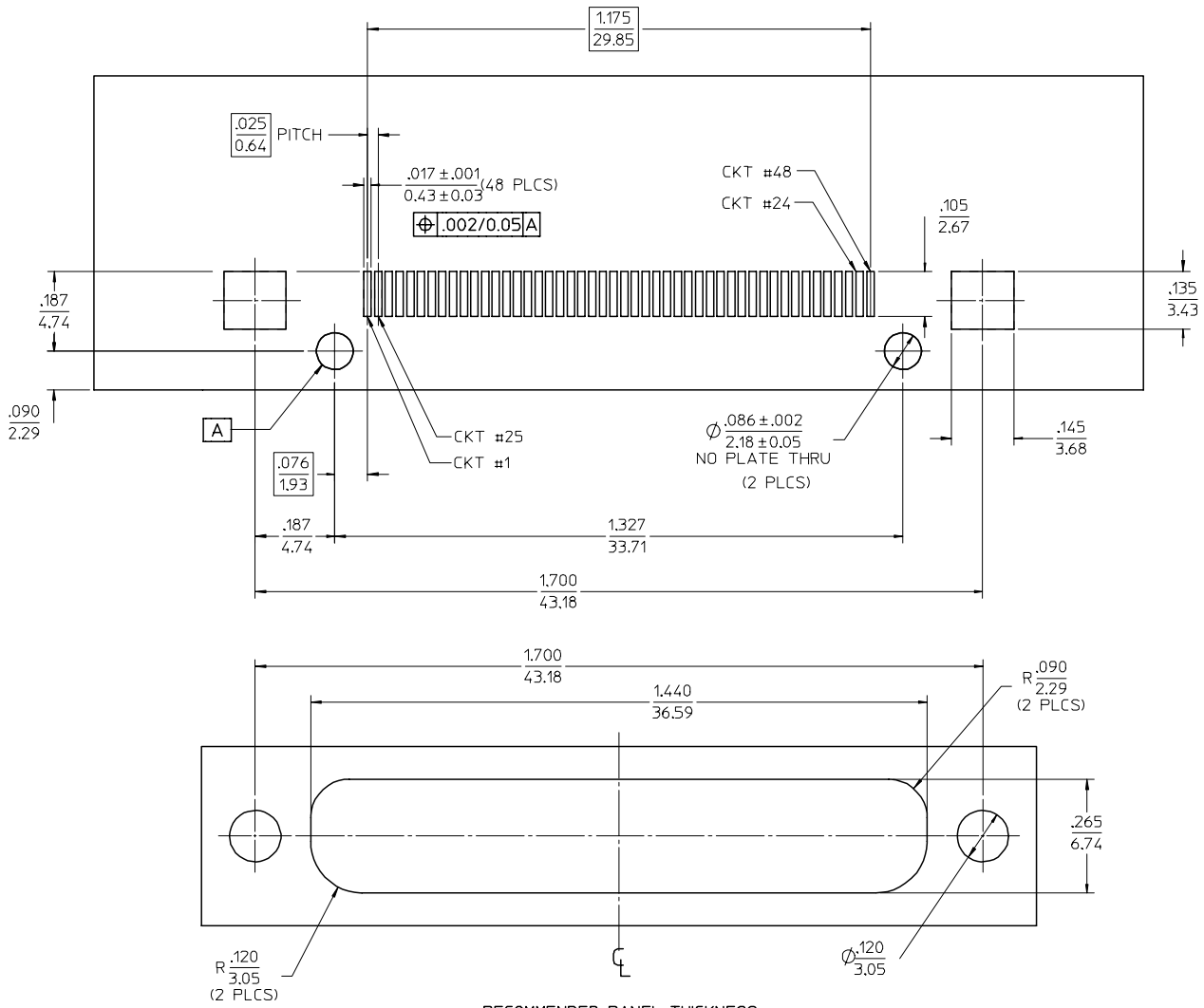


- NOTES:
- MATERIALS:
 - SHIELD - DEEP DRAWN STEEL
 - HOUSING - GLASS FILLED POLYMER, BLACK, UL 94V-0
 - CONTACTS - COPPER ALLOY
 - PLATING:
 - TERMINALS - SELECTIVE GOLD (Au) THICKNESS IN CONTACT AREA, 15 MICROINCHES/0.38 MICROMETER MINIMUM, SELECTIVE MATTE TIN (Sn) THICKNESS IN PC TAIL AREA, 100 MICROINCHES/2.54 MICROMETER MINIMUM, OVER 50 MICROINCHES/1.27 MICROMETER MINIMUM NICKEL (Ni) OVERALL.
 - SHIELD - 100 MICROINCHES/2.54 MICROMETER MINIMUM BRIGHT TIN (Sn) OVER 50 MICROINCHES/1.27 MICROMETER MINIMUM NICKEL (Ni) OVER 100 MICROINCHES/2.54 MICROMETER MINIMUM COPPER (Cu).
 - PC SMT TAILS AND 2 GROUND TABS ARE TO BE COPLANAR WITHIN .005/0.127.
 - PARTS TO BE PACKAGED IN TUBES PER PK-74960-990.
 - REFER TO SHEET 2 FOR RECOMMENDED PCB LAYOUT AND PANEL CUT-OUT.
 - RECOMMENDED JACK POST MOUNTING HARDWARE (QTY 2 PER ASSEMBLY), SEE CHART FOR ITEM NUMBERS AND SALES DRAWING SD-74962-000.
 - PRODUCT CONFORMS TO MOLEX PRODUCT SPECIFICATION PS-74960-000.



CLARIFY CKT LAYOUT EC NO: UCP2005-1075 DRWN:DMORGAN 2005/07/27 CHKD:BBARKER 2005/08/03 APPR:SMILLER 2005/08/03	QUALITY SYMBOLS	GENERAL TOLERANCES (UNLESS SPECIFIED)	SCALE 4:1	DESIGN UNITS INCH	THIRD ANGLE PROJECTION	REVISE ON CAD ONLY
	▽=0	mm INCH	DIMENSION STYLE IN/MM		TITLE	
	◇=0	4 PLACES ± --- ± ---	DRAWN BY DATE		SALES DRAWING - 48 CKT TRIAD DIFFERENTIAL PAIR SMT RECEPTACLE ASSEMBLY MOLEX INCORPORATED	
		3 PLACES ± --- ± .010	TMCCLELL 03/20/02			
		2 PLACES ± 0.25 ± ---	CHECKED BY DATE		MATERIAL NO. DOCUMENT NO. SHEET NO.	
		1 PLACE ± --- ± ---	SCHMIDGA 02/08/19		74960-0048 SD-74960-005 1 OF 2	
		ANGULAR ±1/2°	APPROVED BY DATE		THIS DRAWING CONTAINS INFORMATION THAT IS PROPRIETARY TO MOLEX INCORPORATED AND SHOULD NOT BE USED WITHOUT WRITTEN PERMISSION	
		DRAFT WHERE APPLICABLE	BANAKIS 02/08/19			
		MUST REMAIN WITHIN DIMENSIONS				

MAT'L NUMBER	74962-0001	74962-0002
JACK POST DESCRIPTION	4-40 INTERNAL THREAD	M3 INTERNAL THREAD



RECOMMENDED PANEL THICKNESS
.020/0.51-.040/1.02 MAX.

NOTES:

1. ALL DIMENSIONS ON THIS SHEET ARE ±.005/0.13 TOLERANCE UNLESS OTHERWISE SPECIFIED.
2. DIMENSIONS SHOWN ABOUT A CENTERLINE ARE SYMMETRICAL ABOUT THAT CENTERLINE WITHIN HALF OF THE SPECIFIED TOLERANCE.

CLARIFY CKT LAYOUT EC NO: UCP2005-1075 DRWN:DMORGAN 2005/07/27 CHKD:BBARKER 2005/08/03 APPR:SMILLER 2005/08/03	QUALITY SYMBOLS	GENERAL TOLERANCES (UNLESS SPECIFIED)		SCALE 5:1	DESIGN UNITS INCH	THIRD ANGLE PROJECTION	REVISE ON CAD ONLY	
	DESCRIPTION	▽=0	mm	INCH	DIMENSION STYLE IN/MM		TITLE	
		◇=0	4 PLACES ± --- ± ---	3 PLACES ± --- ± .010	DRAWN BY DATE	SALES DRAWING - 48 CKT TRIAD DIFFERENTIAL PAIR SMT RECEPTACLE ASSEMBLY		
			2 PLACES ± 0.25 ± ---	1 PLACE ± --- ± ---	TMCCLELL 03/20/02			
REV	ANGULAR ±1/2°	DRAFT WHERE APPLICABLE	CHECKED BY DATE	MOLEX INCORPORATED				
		MUST REMAIN WITHIN DIMENSIONS	APPROVED BY DATE	MATERIAL NO. DOCUMENT NO.		SHEET NO.		
			BANAKIS 02/08/19	SEE CHART SD-74960-005		2 OF 2		
			THIS DRAWING CONTAINS INFORMATION THAT IS PROPRIETARY TO MOLEX INCORPORATED AND SHOULD NOT BE USED WITHOUT WRITTEN PERMISSION					