

**PLEASE CHECK WWW.MOLEX.COM FOR LATEST PART INFORMATION**

**Part Number:** [0988171041](#)  
**Status:** **Active**  
**Overview:** NSCC - New Standard Casing Contact  
**Description:** NSCC single part, Unsealed, 1.50mm, Female Housing, 3.33mm Pitch NSCC, Wire to Wire, 4 Circuits, Black

**Documents:**

<a href="#">3D Model</a>	<a href="#">Application Specification AS-98821-001-001 (PDF)</a>
<a href="#">Drawing (PDF)</a>	<a href="#">Packaging Specification PK-31301-635 (PDF)</a>
<a href="#">Product Specification PS-98821-001-001 (PDF)</a>	<a href="#">RoHS Certificate of Compliance (PDF)</a>

**General**

Product Family	Crimp Housings
Series	<a href="#">98817</a>
Application	Power, Wire-to-Wire
Application Tooling Part Link	63813-3800
Overview	<a href="#">NSCC - New Standard Casing Contact</a>
Product Name	NSCC
UPC	822348760930

**Physical**

Breakaway	No
Circuits (maximum)	4
Circuits Detail	4 x 1.5mm female terminals
Color - Resin	Black
Gender	Receptacle
Glow-Wire Compliant	No
Keying to Mating Part	Yes
Lock to Mating Part	Yes
Material - Resin	Polyester
Net Weight	2.480/g
Number of Rows	1
Packaging Type	Carton
Panel Mount	No
Pitch - Mating Interface	3.33mm
Pitch - Termination Interface	3.33mm
Polarized to Mating Part	Yes
Ports	1
Temperature Range - Operating	-40°C to +100°C

**Electrical**

Current - Maximum per Contact	10.0A
-------------------------------	-------

**Solder Process Data**

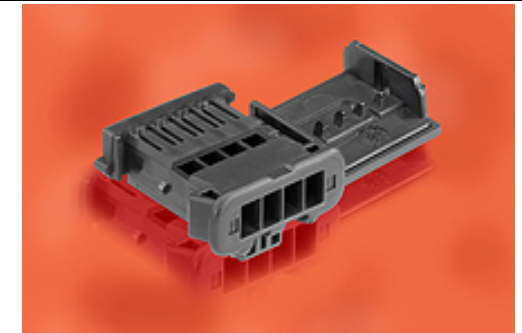
Lead-free Process Capability	N/A
------------------------------	-----

**Material Info**

Engineering Number	010201321
--------------------	-----------

**Reference - Drawing Numbers**

Application Specification	AS-98821-001-001
Packaging Specification	PK-31301-635
Product Specification	PS-98821-001-001
Sales Drawing	SD-98817-003



Series image - Reference only

**EU ELV**

**Compliant**

**EU RoHS**

**Compliant**

**China RoHS**

**REACH SVHC**

Not Contained Per - ED/30/2017 (7 July 2017)

**Halogen-Free**

**Status**

**Not Relevant**

**Need more information on product environmental compliance?**

Email [productcompliance@molex.com](mailto:productcompliance@molex.com)  
Please visit the [Contact Us](#) section for any non-product compliance questions.

China ROHS	Not Relevant
ELV	Compliant
RoHS Phthalates	Not Contained

**Search Parts in this Series**

[98817 Series](#)

**Mates With**

[98822-1041](#) (Male Receptacle Housing)

**Use With**

Female Terminal NSCC [98897-1109](#) , [98897-1119](#) , [98897-1129](#) or FCI Female Terminal 1.5 Sicma 3

**Application Tooling | FAQ**

*Tooling specifications and manuals are found by selecting the products below. Crimp Height Specifications are then contained in the Application Tooling Specification document.*

**Global**

**Description**

**Product #**

Extractor Tool for 0638133800  
Unsealed Receptacle  
Connectors

This document was generated on 08/02/2017

**PLEASE CHECK [WWW.MOLEX.COM](http://WWW.MOLEX.COM) FOR LATEST PART INFORMATION**