

**PLEASE CHECK WWW.MOLEX.COM FOR LATEST PART INFORMATION**

**Part Number:** [1716920110](#)  
**Status:** **Active**  
**Overview:** [Mega-Fit Power Connectors](#)  
**Description:** [Mega-Fit® Receptacle Housing, Dual Row, 10 Circuit, UL 94 V-0, Bag](#)

**Documents:**

|  |  |
|--|--|
| <a href="#">3D Model</a>   | <a href="#">Packaging Specification PK-170001-001-000 (PDF)</a>  |
| <a href="#">Drawing (PDF)</a>                                    | <a href="#">Packaging Specification PK-172323-0002 (PDF)</a>     |
| <a href="#">Product Specification PS-76823-100-001 (PDF)</a>     | <a href="#">Packaging Specification PK-172323-0003-000 (PDF)</a> |
| <a href="#">Product Specification TS-170001-001-001 (PDF)</a>    | <a href="#">RoHS Certificate of Compliance (PDF)</a>             |
| <a href="#">Product Specification TS-76823-100-001 (PDF)</a>     | <a href="#">Product Literature (PDF)</a>                         |
| <a href="#">Application Specification AS-76823-100-001 (PDF)</a> |  |

**Agency Certification**

|     |         |
|-----|---------|
| CSA | LR19980 |
| UL  | E29179  |

**General**

|                             |   |
|-----------------------------|---|
| Product Family              | Crimp Housings                            |
| Series                      | <a href="#">171692</a>                    |
| Application                 | Power, Wire-to-Board, Wire-to-Wire        |
| Overview                    | <a href="#">Mega-Fit Power Connectors</a> |
| Product Literature Order No | 987650-5401                               |
| Product Name                | Mega-Fit®                                 |
| UPC                         | 887191246888                              |

**Physical**

|                               |                 |
|-------------------------------|-----------------|
| Circuits (maximum)            | 10              |
| Color - Resin                 | Black           |
| Flammability                  | 94V-0           |
| Gender                        | Receptacle      |
| Glow-Wire Compliant           | No              |
| Lock to Mating Part           | Yes             |
| Material - Resin              | PBT             |
| Net Weight                    | 4.340/g         |
| Number of Rows                | 2               |
| Packaging Type                | Bag             |
| Panel Mount                   | No              |
| Pitch - Mating Interface      | 5.70mm          |
| Pitch - Termination Interface | 5.70mm          |
| Polarized to Mating Part      | Yes             |
| Temperature Range - Operating | -40°C to +120°C |

**Electrical**

|                               |       |
|-------------------------------|-------|
| Current - Maximum per Contact | 23.0A |
|-------------------------------|-------|

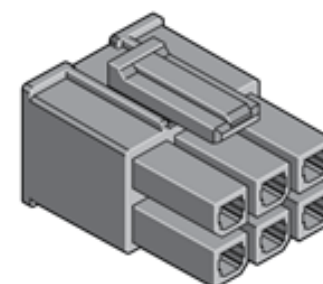
**Solder Process Data**

|                             |     |
|-----------------------------|-----|
| Lead-freeProcess Capability | N/A |
|-----------------------------|-----|

**Material Info**

**Reference - Drawing Numbers**

|                           |   |
|---------------------------|---|
| Application Specification | AS-76823-100-001                                      |
| Packaging Specification   | PK-170001-001-000, PK-172323-0002, PK-172323-0003-000 |
| Product Specification     | PS-76823-100-001, TS-170001-001-001, TS-76823-100-001 |
| Sales Drawing             | SD-171692-0100  |



*Series image - Reference only*

**EU ELV**

**Not Relevant**

**EU RoHS**

**Compliant**

**REACH SVHC**

Not Contained Per - ED/30/2017 (7 July 2017)

**Halogen-Free**

**Status**

**Not Low-Halogen**

**Need more information on product environmental compliance?**

Email [productcompliance@molex.com](mailto:productcompliance@molex.com)  
Please visit the [Contact Us](#) section for any non-product compliance questions.

|                 |               |
|-----------------|---------------|
| China ROHS      | Green Image   |
| ELV             | Not Relevant  |
| RoHS Phthalates | Not Contained |

**Search Parts in this Series**

[171692](#) Series

**Mates With**

Mega-Fit® Header [76825](#) , [76829](#) , [172064](#) , [172065](#)

**Use With**

Mega-Fit® Crimp Terminals [172063](#) , Mega-Fit® Crimp Terminals [76823](#)

This document was generated on 08/02/2017

**PLEASE CHECK [WWW.MOLEX.COM](http://WWW.MOLEX.COM) FOR LATEST PART INFORMATION**