



JavaScript seem to be disabled in your browser.
You must have JavaScript enabled in your browser to utilize the functionality of this website.



Distributors: [Log in](#) or [Register](#)



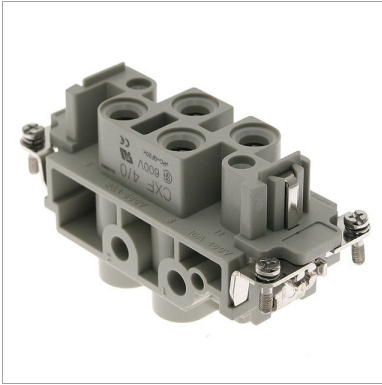
[Chat online now](#)

or call 770.534.4585

[SEARCH](#)

- [Home](#)
- [Company](#)
- [Products](#)
- [Resources](#)
- [Quick Buy](#)
- [Support](#)
- [Contact Us](#)
- [My Account](#)
- [My Cart](#)
- [Checkout](#)
- [Log In](#)

You're here: [Home](#) / [Standard, CX series, Female Rectangular Insert, 4 pin, 80 amp, Screw](#)



Double click on above image to view full picture



Standard, CX series, Female Rectangular Insert, 4 pin, 80 amp, Screw

Part # CXF-4/0

Stock: 1265 in stock.

USD

Like 0

Qty:

[ADD TO CART](#)

[Email this Product](#)
[Add to Product List](#)

Quick Overview

Female insert for Rectangular Connector, 4 Pins

My Cart
You have no items in your shopping cart.

Mencom Newsletter
Join our newsletter & receive the latest news from Mencom

[SIGN UP](#)

Chat online now
Chat with us online during business hours, 8 - 5 EST

Specification	Description	Mating Inserts	Mating Base	Mating Hood	Downloads
Product Type	Rectangular Connectors				
ILME Series	CX				
Mencom Series	N/A				
Component Type	Insert				
Housing/Insert Type	Standard				
Lever Type	N/A				
Pegs	N/A				
Hood Entry	N/A				
Hood Thread	N/A				
Enclosure Dimension	77.27				
Number of Entries	0				
Gasket/O-Ring	No				
Pin Count	4				
Insert Dimension	77.27				
Gender	Female				
Contact Plating	Silver				
Double Insert	N/A				
Wire Gauge	N/A				
Voltage Rating	600				
Amperage Rating	80				
Cable Length in meters	N/A				
Cable Length in feet	N/A				
Mounting Style	N/A				
Cover	No				
Upper AWG	6				
Lower AWG	12				
Termination	Screw				
Enclosure Material	N/A				
Temperature Range in Degrees Celsius	-40 C to +125 C				
IP Rating	N/A				
Weight (lbs.)	0.2530				

