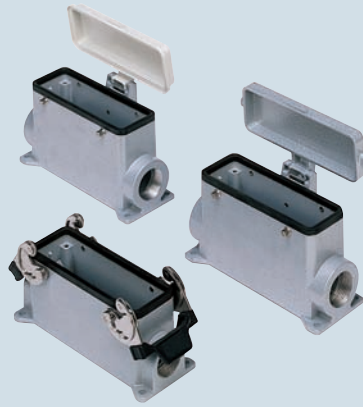




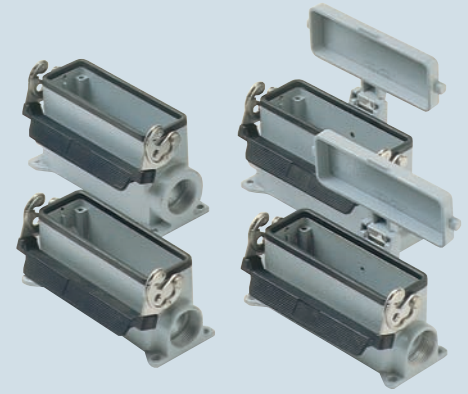
inserts:	page:
CD 64 poles + ⊕	59
CDD 108 poles + ⊕	72
CDS 42 poles + ⊕	81
CSH 24 poles + ⊕	94
CNE, CSE 24 poles + ⊕	107
CCE 24 poles + ⊕	113
CSS 24 poles + ⊕	125
CQE 46 poles + ⊕	141
CQEE 64 poles + ⊕	147
CMCE 10+2 (aux) poles + ⊕	152
CMSH 10+2 (aux) poles + ⊕	153
CX 4/8 and 6/6 poles + ⊕	173 and 175
MIXO 6 modules	179-215

insert centre distance:
104 x 27 mm

surface mounting housings with 2 levers or 4 pegs



surface mounting housings with single lever

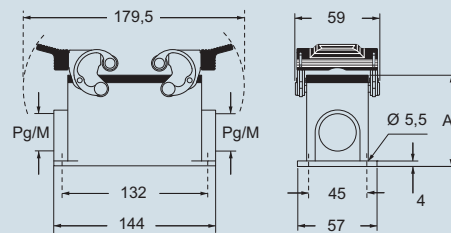


description	part No.	entry Pg	part No.	entry M	part No.	entry Pg	part No.	entry M
with levers	CHP 24	21	MHP 24.25	25	CHP 24 L	21	MHP 24 L25	25
with levers	CHP 24.2	21 x 2	MHP 24.225	25 x 2	CHP 24 L2	21 x 2	MHP 24 L225	25 x 2
with levers, high construction	CAP 24.21	21	MAP 24.32	32	CAP 24 L	21	MAP 24 L32	32
with levers, high construction	CAP 24.221	21 x 2	MAP 24.232	32 x 2	CAP 24 L2	21 x 2	MAP 24 L232	32 x 2
with levers, high construction	CAP 24.29	29	MAP 24.40	40	CAP 24 L29	29	MAP 24 L40	40
with levers, high construction	CAP 24.229	29 x 2	MAP 24.240	40 x 2	CAP 24 L229	29 x 2	MAP 24 L240	40 x 2
with pegs and aluminum cover ¹⁾	CHP 24 CS	21	MHP 24 CS25	25				
with pegs and aluminum cover ¹⁾	CHP 24 CS2	21 x 2	MHP 24 CS225	25 x 2				
with pegs and aluminum cover, high construction ¹⁾	CAP 24 CS	21	MAP 24 CS32	32				
with pegs and aluminum cover, high construction ¹⁾	CAP 24 CS2	21 x 2	MAP 24 CS232	32 x 2				
with pegs and aluminum cover, high construction ¹⁾	CAP 24 CS29	29	MAP 24 CS40	40				
with pegs and aluminum cover, high construction ¹⁾	CAP 24 CS229	29 x 2	MAP 24 CS240	40 x 2				
with pegs and plastic cover ¹⁾	CHP 24 CP	21	MHP 24 CP25	25				
with pegs and plastic cover ¹⁾	CHP 24 CP2	21 x 2	MHP 24 CP225	25 x 2				
with pegs and plastic cover, high construction ¹⁾	CAP 24 CP	21	MAP 24 CP32	32				
with pegs and plastic cover, high construction ¹⁾	CAP 24 CP2	21 x 2	MAP 24 CP232	32 x 2				
with pegs and plastic cover, high construction ¹⁾	CAP 24 CP29	29	MAP 24 CP40	40				
with pegs and plastic cover, high construction ¹⁾	CAP 24 CP229	29 x 2	MAP 24 CP240	40 x 2				
with lever and cover					CHP 24 LS	21	MHP 24 LS25	25
with lever and cover					CHP 24 LS2	21 x 2	MHP 24 LS225	25 x 2
with lever and cover, high construction					CAP 24 LS	21	MAP 24 LS32	32
with lever and cover, high construction					CAP 24 LS2	21 x 2	MAP 24 LS232	32 x 2
with lever and cover, high construction					CAP 24 LS29	29	MAP 24 LS40	40
with lever and cover, high construction					CAP 24 LS229	29 x 2	MAP 24 LS240	40 x 2

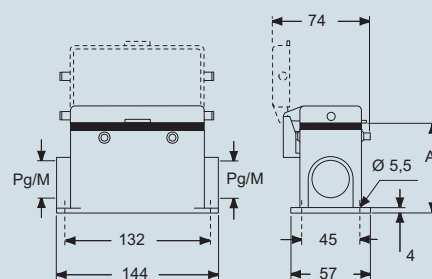
¹⁾ may be combined with enclosures:
- CHO/CAO 24 X and CHV/CAV 24 X
- MHO/MAO 24 X and MHV/MAV 24 X

dimensions in mm

CHP - CAP and MHP - MAP



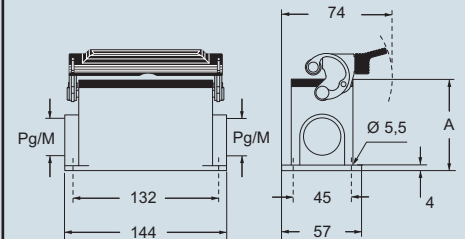
CHP CS/CP - CAP CS/CP and MHP CS/CP - MAP CS/CP



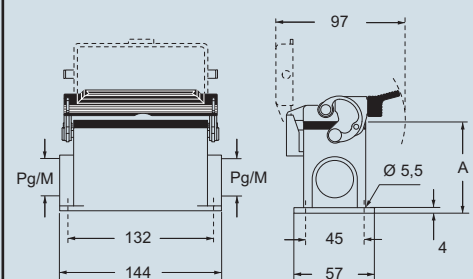
type	A
CHP / MHP	63
CAP / MAP	81
CHP CS / MHP CS	63
CAP CS / MAP CS	81
CHP CP / MHP CP	63
CAP CP / MAP CP	81

dimensions in mm

CHP L - CAP L and MHP L - MAP L



CHP LS - CAP LS and MHP LS - MAP LS



type	A
CHP L / MHP L	63
CAP L / MAP L	81
CHP LS / MHP LS	63
CAP LS / MAP LS	81

NB:
The enclosures ensure IP66 protection (or IP65 for hinged cover versions) rating when mated and locked with the closing levers.
The cover (CS, CP) only ensures mechanical protection, but does not ensure IP65 protection rating.

CALUS® Type 4/4X/12
(except enclosures with plastic cover)



dimensions shown are not binding and may be changed without notice