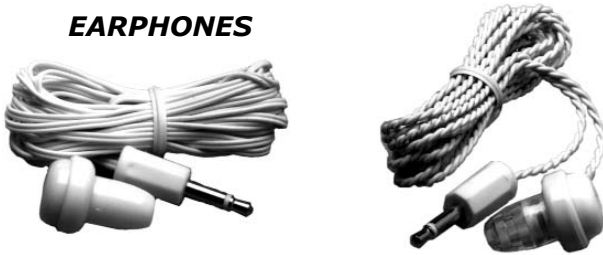


EARPHONES



- 70-216-0** 8Ω 3.5mm plug 3' black cord
- 70-217-0** 8Ω 3.5mm plug 3' beige cord
- 70-218-0** 8Ω 3.5mm plug 6' twisted beige
- 70-220-0** 8Ω 2.5mm plug 3' black cord
- 70-265-0** 20MΩ Crystal 3.5mm 3' beige cord
Use -1 for Display Package



- 70-706-1**
8Ω @ 10 watts 500Hz - 7.8KHz
5" diameter opening. 6" wire leads.
All metal with swivel bracket.

EXTENSION SPEAKER



- 70-608-1**
8Ω @ 5 watts
113L x 110W x 66D (mm)
2 meter cord with 3.5mm plug
Detachable bracket.



- 70-707-1**
8Ω @ 10 watts 500Hz - 7.8KHz
5" diameter opening, 6" wire leads.
White ABS plastic.

OUTDOOR HORN SPEAKERS



- 70-703-1**
8Ω @ 15 watts 360Hz - 7.5KHz
5" x 8" opening. 8" length 12" wire leads
Green ABS horn, metal mounting bracket

MICROPHONE

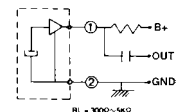
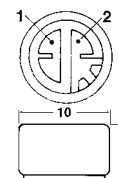


- 72-118-1**
Diecast professional uni-directional microphone.
Impedance: 600Ω
Frequency response: 60Hz to 12KHz
Sensitivity: -73db @ 1KHz
Weight: 285 grams
Complete with storage case, 20' cord and bracket.



- 70-704-1**
8Ω @ 20 watts 360Hz - 7.5KHz
4.5" x 8" opening. 9 1/4" length, 12"
wire leads. White ABS plastic.

ELECTRET MICROPHONE



- 72-160-0** Omni-directional electret cartridge.
Impedance: same as load resistor (RL)
Sensitivity: -69db (Vcc=4.5V RL=1KΩ)
Freq. response: 50Hz - 13KHz
Input voltage: 1.5V to 10V (Typ. 4.5V)
Current: .6mA maximum
S/N ratio: over 40db

Bulk speaker wire is located on Page 53.