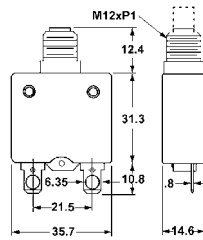


CIRCUIT BREAKERS



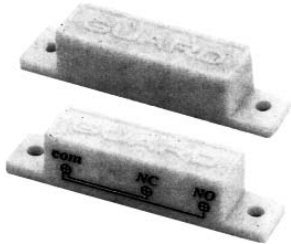
**125VAC
50VDC**



- | | | | |
|-----------------|-----|-----------------|-----|
| 47-503-0 | 3A | 47-515-0 | 15A |
| 47-504-0 | 4A | 47-520-0 | 20A |
| 47-505-0 | 5A | 47-525-0 | 25A |
| 47-510-0 | 10A | 47-530-0 | 30A |

Use -1 for Display Package

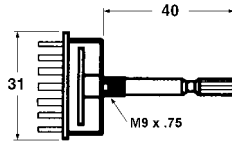
MAGNETIC SWITCHES



Magnetic reed switch for security alarms. Has normally open and normally closed switch contacts. Screw terminals.
12VDC@500ma

- | | |
|-----------------|------|
| 47-600-0 | Bulk |
| 47-600-1 | Pkg. |

ROTARY SWITCHES



.3 A @ 30VDC non-shorting. Knurled shaft with split.

- | | | |
|-----------------|--------|-------------|
| 48-511-0 | 1 pole | 12 position |
| 48-512-0 | 2 pole | 6 position |
| 48-513-0 | 3 pole | 4 position |
| 48-514-0 | 4 pole | 3 position |

Use -1 for Display Package

RELAYS AUTOMOTIVE RELAYS

12 VDC

**New
Item**

- | | |
|------------------|-------------|
| 50-836-0 | SPDT 30 AMP |
| 50-836H-0 | SPDT 40 AMP |
- Use -1 for Display Package



Socket Housing for Auto Relays

c/w 5 terminals

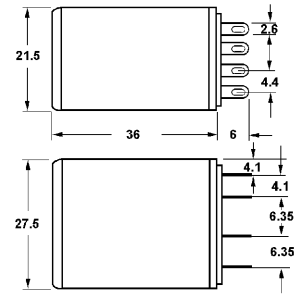
- | | |
|-----------------|-------------------|
| 50-920-0 | Auto Relay Socket |
|-----------------|-------------------|

Socket for 50-06x and 50-09x shown above.

- | | | |
|-----------------|------|-------------|
| 50-901-0 | DPDT | PC Mount |
| 50-902-0 | 4PDT | PC Mount |
| 50-911-0 | DPDT | Screw Term. |
| 50-912-0 | 4PDT | Screw Term. |

Use -1 for Display Package

DPDT & 4PDT 5 AMP RELAYS

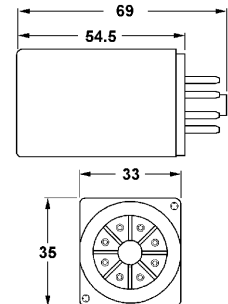


Contact Resistance: 50mΩ max.
Operate Time: 25ms max.
Release Time: 25ms max.
Insulation Resistance: 100MΩ min.
Mechanical Life: 10M cycles
Electrical Life: 100K cycles
Resistive Load: 5A@28VDC or 250VAC

Part Number	Circuitry	Oper. Volt.	Coil Res.
50-061-0	DPDT	6VDC	40 Ω
50-063-0	DPDT	12VDC	160 Ω
50-064-0	DPDT	24VDC	650 Ω
50-068-0	DPDT	48VDC	2600 Ω
50-069-0	DPDT	120VAC	3400 Ω
50-091-0	4PDT	6VDC	40 Ω
50-093-0	4PDT	12VDC	160 Ω
50-094-0	4PDT	24VDC	650 Ω
50-098-0	4PDT	48VDC	2600 Ω
50-099-0	4PDT	120VAC	3400 Ω

Use -1 for Display Package

10 AMP OCTAL BASE RELAYS



Contact Resistance: 50mΩ max.
Operate Time: 20ms max.
Release Time: 20ms max.
Insulation Resistance: 100MΩ min.
Mechanical Life: 10M cycles
Electrical Life: 100K cycles
Resistive Load: 10A@28VDC or 120VAC

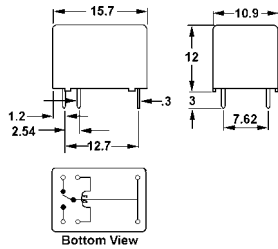
Part Number	Circuitry	Oper. Volt.	Coil Res.
50-133-0	SPDT	12VDC	120 Ω
50-134-0	SPDT	24VDC	472 Ω
50-139-0	SPDT	120VAC	2250 Ω
50-163-0	DPDT	12VDC	120 Ω
50-164-0	DPDT	24VDC	472 Ω
50-169-0	DPDT	120VAC	2250 Ω

Use -1 for Display Package

Octal Socket for 50-13x and 50-16x shown above.

- | | |
|-----------------|--------------|
| 50-910-0 | Octal Socket |
|-----------------|--------------|
- Use -1 for Display Package

3 AMP PC RELAYS

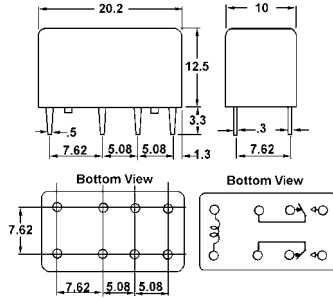


Use -1 for Display Package

Contact Resistance: 100mΩ max.
Operate Time: 10ms max.
Release Time: 5ms max.
Insulation Resistance: 100MΩ min.
Mechanical Life: 10M cycles
Electrical Life: 500K cycles
Resistive Load: 3A@28VDC or 120VAC

Part Number	Circuitry	Oper. Volt.	Coil Res.
50-330-0	SPDT	5VDC	120 Ω
50-331-0	SPDT	6VDC	180 Ω
50-333-0	SPDT	12VDC	700 Ω
50-334-0	SPDT	24VDC	2800 Ω

1 AMP PC RELAYS (16-PIN DIP)

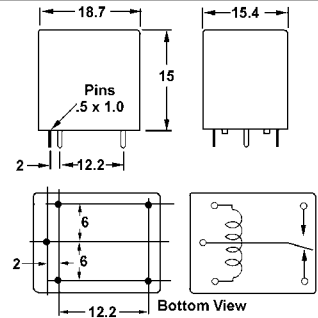
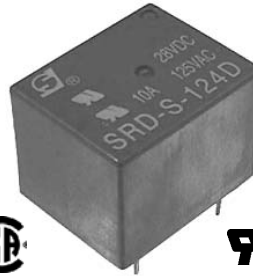


Contact Resistance: 50mΩ max.
Operate Time: 10ms max.
Release Time: 4ms max.
Insulation Resistance: 100MΩ min.
Mechanical Life: 100M cycles
Electrical Life: 100K cycles
Resistive Load: 1A@30VDC or .3A@125VAC

Part Number	Circuitry	Oper. Volt.	Coil Res.
50-430-0	2C	5VDC	125 Ω
50-433-0	2C	12VDC	720 Ω
50-434-0	2C	24VDC	2880 Ω
50-435-0	2C	48VDC	4600 Ω

Use -1 for Display Package

10 AMP PC RELAYS



Contact Resistance: 100mΩ max.
Operate Time: 8ms max.
Release Time: 5ms max.
Insulation Resistance: 100MΩ min.
Mechanical Life: 10M cycles
Electrical Life: 100K cycles
Resistive Load: 10A@28VDC or 10A@125VAC
Inductive Load: 3A@28VDC or 3A@125VAC

Part Number	Circuitry	Oper. Volt.	Coil Res.
50-530-0	SPDT	5VDC	70 Ω
50-533-0	SPDT	12VDC	400 Ω
50-534-0	SPDT	24VDC	1600 Ω
50-535-0	SPDT	48VDC	6400 Ω

Use -1 for Display Package

PLASTIC CASES



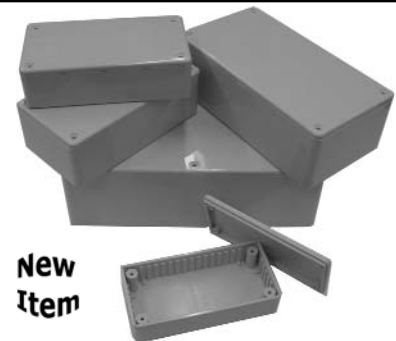
Black plastic project boxes.

Outside dimensions shown

- 53-520-0 82L x 54W x 31H (plastic cover)
- 53-522-0 83L x 54W x 30H (alum. cover)
- 53-540-0 103L x 54W x 40H (alum. cover)

Use -1 for Display Package

Light grey ABS (UL94HB) project boxes. Self tapping screws included



New Item

- 53-530H-0 100L x 50W x 25H grey ABS plastic
- 53-535H-0 112L x 62W x 31H grey ABS plastic
- 53-551H-0 120L x 65W x 40H grey ABS plastic
- 53-571H-0 150L x 80W x 50H grey ABS plastic
- 53-581H-0 191L x 110W x 61H grey ABS plastic

Use -1 for Display Package



Inside dimensions shown

- 53-541-0 99L x 49W x 40H grey ABS plastic
- 53-551-0 125L x 60W x 40H grey ABS plastic
- 53-571-0 145L x 85W x 50H grey ABS plastic
- 53-581-0 180L x 110W x 60H grey ABS plastic

Use -1 for Display Package



- 53-918-0 275Lx182Wx40H polypropylene box with 18 compartments.