

**59-100-0**

**59-100-0**

115VAC  
120 x 120 x 38mm

Bearing: Sleeve  
Air flow: 101 CFM  
Load: .20 A (18 watts)  
Noise: 45 dbA  
Speed: 3000 RPM



**59-101-0**

115VAC  
120 x 120 x 38mm



Bearing: Ball  
Air flow: 105 CFM  
Load: .20 A (18 watts)  
Noise: 40 dbA  
Speed: 2700 RPM



**59-112-0**

12VDC  
120 x 120 x 38mm

Bearing: Sleeve  
Air flow: 105 CFM  
Load: .5 A (6 watts)  
Noise: 43 dbA  
Speed: 2800 RPM



**59-113-0**

12VDC  
120 x 120 x 38mm

Bearing: Hypro  
Air flow: 105 CFM  
Load: .5 A (6 watts)  
Noise: 43 dbA  
Speed: 2800 RPM

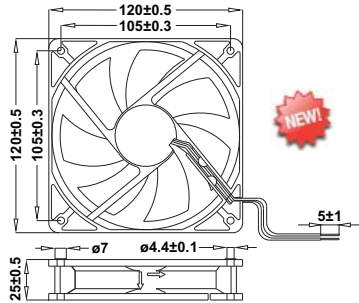


**59-114-0**

12VDC  
120 x 120 x 38mm



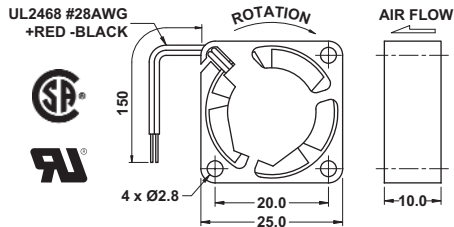
Bearing: Ball  
Air flow: 140 CFM  
Load: .55 A (6.6 watts)  
Noise: 43 dbA  
Speed: 2800 RPM



**59-115-0**

12VDC  
120 x 120 x 25mm

Bearing: Sleeve  
Air flow: 90 CFM  
Load: .25 A (3 watts)  
Noise: 33 dbA  
Speed: 2300 RPM



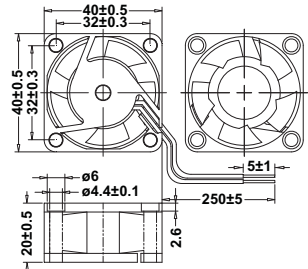
**59-225-0**

12VDC  
25 x 25 x 10mm

Bearing: Hypro  
Air flow: 1.8 CFM  
Load: .07 A (.8 watts)  
Noise: 15.6 dbA  
Speed: 8000 RPM



**59-245B-0**



**59-244-0**

12VDC  
40 x 40 x 20mm

Bearing: Sleeve  
Air flow: 5.2 CFM  
Load: .05 A (.6 watts)  
Noise: 23 dbA  
Speed: 4500 RPM



**59-245-0**

12VDC  
40 x 40 x 20mm

Bearing: Hypro  
Air flow: 7.5 CFM  
Load: .07 A (.8 watts)  
Noise: 24 dbA  
Speed: 6000 RPM



**59-245B-0**

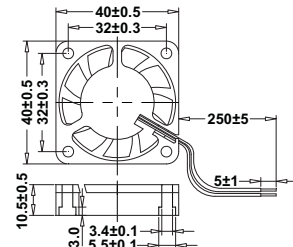
12VDC  
40 x 40 x 20mm



Bearing: Ball  
Air flow: 7.45 CFM  
Load: .08 A (.96 watts)  
Noise: 28 dbA  
Speed: 6500 RPM



**59-246-0**



**59-246-0**

12VDC  
40 x 40 x 10mm



Bearing: Sleeve  
Air flow: 6.45 CFM  
Load: .12 A (1.44 watts)  
Noise: 25 dbA  
Speed: 6600 RPM



**59-247-0**

12VDC  
40 x 40 x 10mm

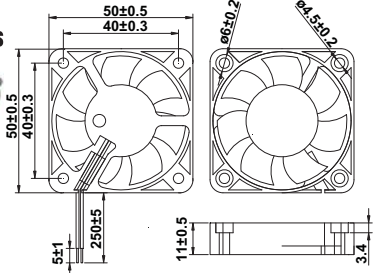


Bearing: Ball  
Air flow: 6.45 CFM  
Load: .12 A (1.44 watts)  
Noise: 25 dbA  
Speed: 6600 RPM



**RU US**

**TUV**

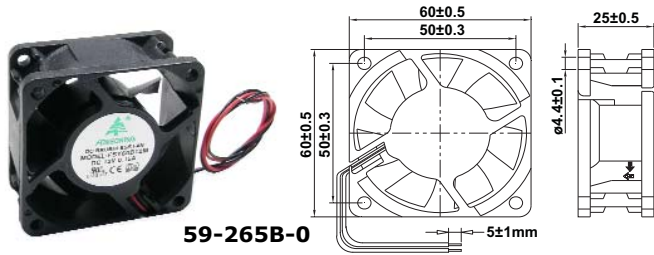


**59-254-0**

12VDC  
50 x 50 x 10mm

Bearing: Sleeve  
Air flow: 9.69 CFM  
Load: .12 A (1.44 watts)  
Noise: 31 dbA  
Speed: 5700 RPM

**MODE ELECTRONICS LTD.**  
211 - 2999 UNDERHILL AVE.,  
BURNABY, B.C., CANADA, V5A 3C2  
Phone: 604-435-6633  
Fax: 604-435-8890  
Toll Free: 1-800-663-4992  
Web Site: www.mode-elec.com



**59-265B-0**

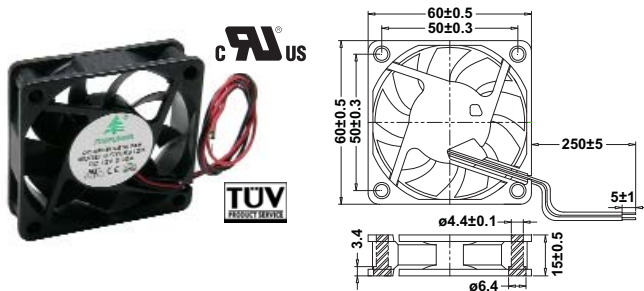
**59-264-0**  
12VDC  
60 x 60 x 25mm  
Bearing: Sleeve  
Air flow: 18 CFM  
Load: .16 A (1.9 watts)  
Noise: 31 dbA  
Speed: 3800 RPM



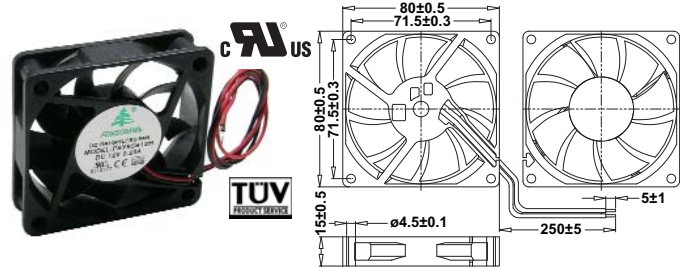
**59-265-0**  
12VDC  
60 x 60 x 25mm  
Bearing: Hypro  
Air flow: 18 CFM  
Load: .14 A (1.7 watts)  
Noise: 24 dbA  
Speed: 3500 RPM



**59-265B-0**  
12VDC  
60 x 60 x 25mm  
Bearing: Ball  
Air flow: 18 CFM  
Load: .15 A (1.8 watts)  
Noise: 32 dbA  
Speed: 1800 RPM

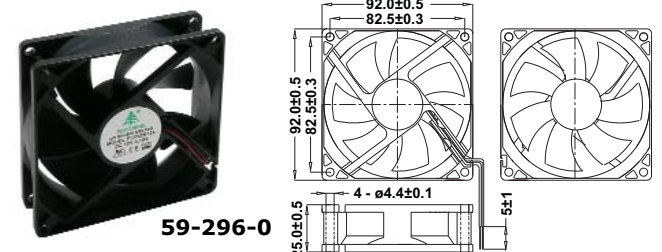


**59-266-0**  
12VDC  
60 x 60 x 15mm  
Bearing: Sleeve  
Air flow: 20 CFM  
Load: .2 A (2.4 watts)  
Noise: 32 dbA  
Speed: 4500 RPM



**59-286-0**

12VDC  
80 x 80 x 15mm  
Bearing: Sleeve  
Air flow: 36 CFM  
Load: .22 A (2.64 watts)  
Noise: 32 dbA  
Speed: 3600 RPM



**59-296-0**

**59-294-0**  
12VDC  
92 x 92 x 25mm  
Bearing: Sleeve  
Air flow: 50 CFM  
Load: .25 A (3 watts)  
Noise: 34 dbA  
Speed: 2700 RPM



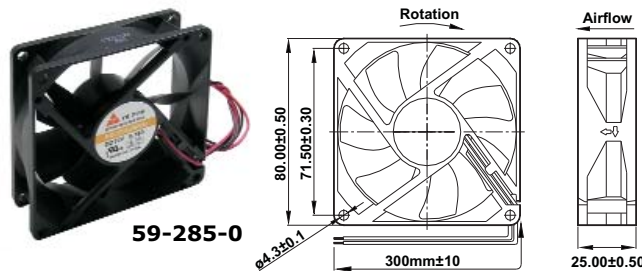
**59-295-0**  
12VDC  
92 x 92 x 25mm  
Bearing: Ball  
Air flow: 54 CFM  
Load: .22 A (2.64 watts)  
Noise: 38 dbA  
Speed: 2800 RPM



**59-296-0**  
12VDC  
92 x 92 x 25mm  
Bearing: Sleeve  
Air flow: 23 CFM  
Load: .1 A (1.2 watts)  
Noise: 38 dbA  
Speed: 2100 RPM



**FAN ACCESSORIES**



**59-285-0**

**59-284-0**  
12VDC  
80 x 80 x 25mm  
Bearing: Sleeve  
Air flow: 27 CFM  
Load: .12 A (1.4 watts)  
Noise: 25 dbA  
Speed: 2200 RPM

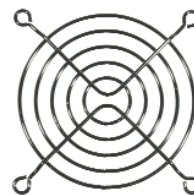


**59-285-0**  
12VDC  
80 x 80 x 25mm  
Bearing: Ball  
Air flow: 37 CFM  
Load: .16 A (1.9 watts)  
Noise: 30 dbA  
Speed: 2500 RPM



600mm power cord for  
59-100-0 and 59-101-0

**59-306-0** Bulk



Nickel plated finger guards

**59-310-0** 120mm  
**59-316-0** 60mm  
**59-318-0** 80mm  
**59-319-0** 92mm



Fan filter kits

**59-330-0** 40mm  
**59-331-0** 50mm  
**59-332-0** 60mm  
**59-333-0** 80mm  
**59-334-0** 92mm  
**59-335-0** 120mm



The fans shown in this catalog are our most popular types. If you require a different size or voltage, please contact us or your local Mode distributor for price and availability.