

D-SUB SPECIFICATIONS

MATERIALS

Shell: Tin or zinc over copper plated steel
 Contacts: Male - Brass (gold plated over nickel)
 Female - Gold plated phosphor bronze
 Insulator: PBT & glass-fibre reinforced UL94V-0

ELECTRICAL

Current rating: 3 amps
 Working voltage: 125V RMS
 Dielectric strength: 1000 volts for 1 minute
 Insulation resistance: 1000MΩ @ 500VDC
 Temperature range: -55 to +105 degrees C

SOLDER D-SUB CONNECTORS

MALE

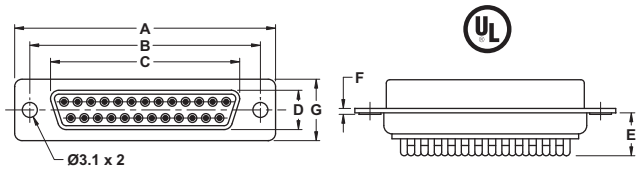
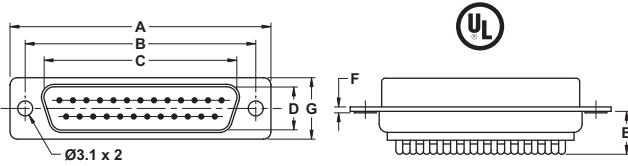


30-110-0 9-position
30-111-0 15-position
30-112-0 25-position
30-113-0 37-position
30-114-0 50-position
 Use -1 for Display Package

FEMALE



30-120-0 9-position
30-121-0 15-position
30-122-0 25-position
30-123-0 37-position
 Use -1 for Display Package



Size	A	B	C	D	E	F	G
9-pin	30.80	25.00	16.92	8.30	8.0	1.2	12.5
15-pin	39.20	33.30	25.25	8.30	8.0	1.2	12.5
25-pin	53.10	47.10	38.96	8.30	8.0	1.2	12.5
37-pin	69.40	63.50	55.42	8.30	8.0	1.2	12.5
50-pin	67.00	61.00	52.81	11.30	8.0	1.2	15.3

Size	A	B	C	D	E	F	G
9-pin	30.80	25.00	16.30	7.90	8.0	1.2	12.5
15-pin	39.20	33.30	24.60	7.90	8.0	1.2	12.5
25-pin	53.10	47.10	38.30	7.90	8.0	1.2	12.5
37-pin	69.40	63.50	54.80	7.90	8.0	1.2	12.5

CRIMP D-SUB CONNECTORS

MALE

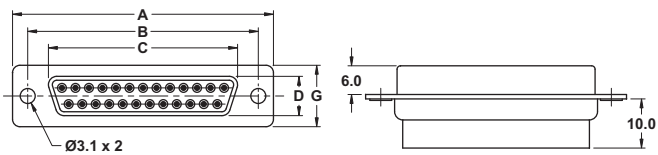
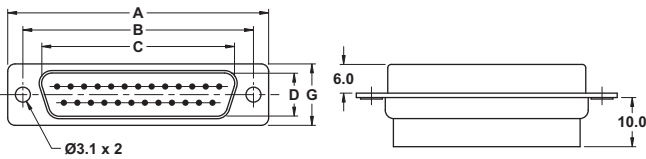


30-210-0 9-position
30-211-0 15-position
30-212-0 25-position
30-213-0 37-position
 Display package (-1) contains connector body plus contacts

FEMALE



30-220-0 9-position
30-221-0 15-position
30-222-0 25-position
 Display package (-1) contains connector body plus contacts



Size	A	B	C	D	G
9-pin	30.80	25.00	16.92	8.30	12.5
15-pin	39.20	33.30	25.25	8.30	12.5
25-pin	53.10	47.10	38.96	8.30	12.5
37-pin	69.40	63.50	55.42	8.30	12.5

Size	A	B	C	D	G
9-pin	30.80	25.00	16.30	7.90	12.5
15-pin	39.20	33.30	24.60	7.90	12.5
25-pin	53.10	47.10	38.30	7.90	12.5

D-SUB CRIMP CONTACTS

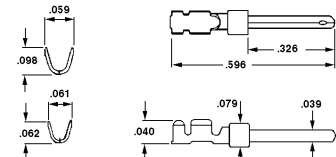
Contacts for 30-21X and 30-22X series D-sub connectors.

Gold plated D-sub contacts. Suitable for 26-28 AWG wire size.



30-226-0 Male contacts (loose)
30-226-100 Display Package (100)

30-228-0 Female contacts (loose)
30-228-100 Display Package (100)



D-SUB ACCESSORIES

FEMALE LOCK POSTS



Locking hardware c/w nuts & washers (set of two)

30-023-0 Bulk only

MALE LOCK SCREWS



Locking screws c/w clip-on captivators (set of two)

30-028-0 Bulk only

MALE LOCK POSTS



Knurled lock posts - use with hoods (set 2)

30-030-0 Bulk only

D-SUB HOODS

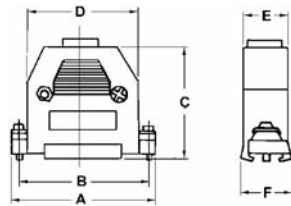
Grey plastic D-sub hoods complete with all hardware

- 30-130-0** 9-position
 - 30-131-0** 15-position
 - 30-132-0** 25-position
 - 30-133-0** 37-position
 - 30-134-0** 50-position
- Use -1 for Display Package



Chrome plated plastic D-sub hoods for EMI/RFI shielding

- 30-230-0** 9-position
 - 30-231-0** 15-position
 - 30-232-0** 25-position
 - 30-233-0** 37-position
 - 30-234-0** 50-position
- Use -1 for Display Package



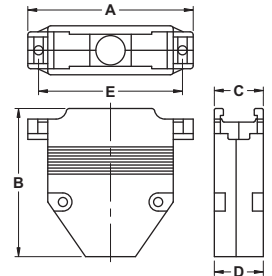
Size	A	B	C	D	E	F
9-pin	31.00	24.99	39.50	20.50	16.5	16.5
15-pin	39.00	33.52	35.50	28.00	16.5	17.5
25-pin	55.50	47.04	41.00	37.00	16.5	16.5
37-pin	69.50	63.50	51.00	51.00	24.0	19.0
50-pin	69.10	61.11	44.00	54.50	20.0	19.0



Die Cast Metal D-sub hoods complete with all hardware

- 30-230M-0** 9-position
 - 30-231M-0** 15-position
 - 30-232M-0** 25-position
- Use -1 for Display Package

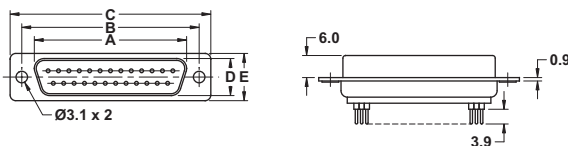
Size	A	B	C	D	E
9-pin	31.00	47.00	15.60	15.80	24.99
15-pin	40.00	48.00	15.80	15.80	33.32
25-pin	53.50	48.00	16.00	16.00	47.04



PRINTED CIRCUIT MOUNT D-SUBS

MALE

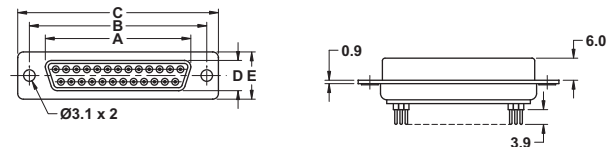
- 30-310-0** 9-position
 - 30-311-0** 15-position
 - 30-313-0** 37-position
 - 30-314-0** 50-position
- Use -1 for Display Package



Size	A	B	C	D	E
9-pin	16.92	25.00	30.80	8.30	12.5
15-pin	25.25	33.30	39.20	8.30	12.5
25-pin	39.96	47.10	53.10	8.30	12.5
37-pin	55.42	63.50	69.40	8.30	12.5
50-pin	52.81	61.00	67.00	11.30	15.3

FEMALE

- 30-320-0** 9-position
 - 30-322-0** 25-position
 - 30-323-0** 37-position
 - 30-324-0** 50-position
- Use -1 for Display Package



Size	A	B	C	D	E
9-pin	16.30	25.00	30.80	7.90	12.5
25-pin	38.30	47.10	53.10	7.90	12.5
37-pin	54.80	63.50	69.40	7.90	12.5
50-pin	52.20	61.00	67.00	10.9	15.3

MALE

HIGH DENSITY SOLDER D-SUBS

FEMALE

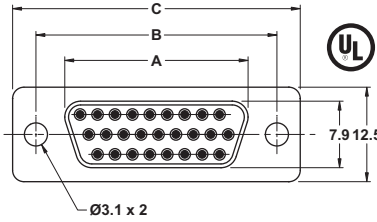
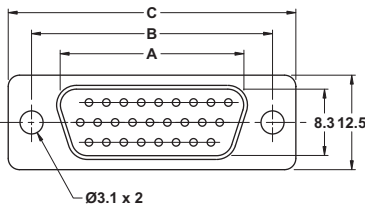


- 30-810-0** 15-position
- 30-811-0** 26-position
- 30-812-0** 44-position
- Use -1 for Display Package

- 30-820-0** 15-position
- 30-821-0** 26-position
- Use -1 for Display Package



Size	A	B	C
15-pin	16.92	25.00	30.80
26-pin	25.25	33.30	39.20
44-pin	38.96	47.10	53.10



Size	A	B	C
15-pin	16.30	25.00	30.80
26-pin	24.60	33.30	39.20

RIGHT ANGLE P.C. MOUNT D-SUB

.318"/8.1mm footprint

MALE

FEMALE

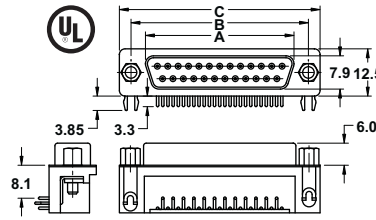
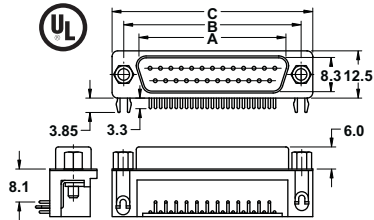


- 30-410-0** 9-position
- 30-411-0** 15-position
- 30-412-0** 25-position
- Use -1 for Display Package

- 30-420-0** 9-position
- 30-421-0** 15-position
- 30-422-0** 25-position
- 30-423-0** 37-position
- Use -1 for Display Package



Size	A	B	C
9-pin	16.92	25.00	30.80
15-pin	25.25	33.30	39.20
25-pin	38.60	47.10	53.10



Size	A	B	C
9-pin	16.30	25.00	30.80
15-pin	24.60	33.30	39.20
25-pin	38.30	47.10	53.10
37-pin	54.80	63.50	69.4

MALE

RIBBON CABLE D-SUBS

FEMALE

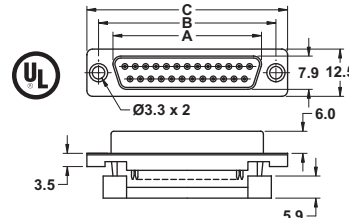
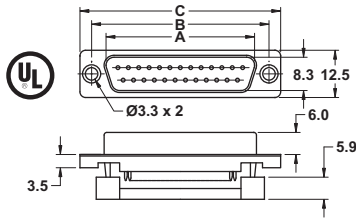


- 30-710-0** 9-position
- 30-711-0** 15-position
- 30-712-0** 25-position
- 30-713-0** 37-position
- Use -1 for Display Package

- 30-720-0** 9-position
- 30-721-0** 15-position
- 30-722-0** 25-position
- Use -1 for Display Package



Size	A	B	C
9-pin	16.92	25.00	30.80
15-pin	25.25	33.30	39.20
25-pin	38.60	47.10	53.10
37-pin	55.42	63.50	69.4



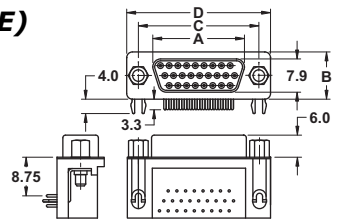
Size	A	B	C
9-pin	16.30	25.00	30.80
15-pin	24.60	33.30	39.20
25-pin	38.30	47.10	53.10

HIGH DENSITY R/A P.C. MOUNT D-SUBS (FEMALE)



- 30-860-0** 15-position
- 30-861-0** 26-position
- Use -1 for Display Package

Size	A	B	C	D
15-pin	16.30	12.5	25.00	30.80
26-pin	24.60	12.5	33.30	39.20



CENTRONICS CONNECTOR

RIBBON CABLE PLUG



- 30-942-0** 36-position
- Use -1 for Display Package