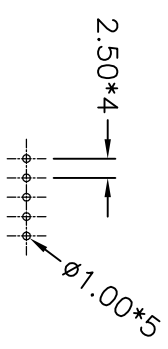
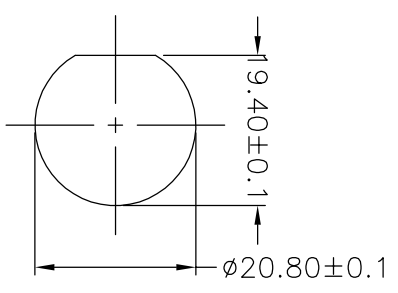
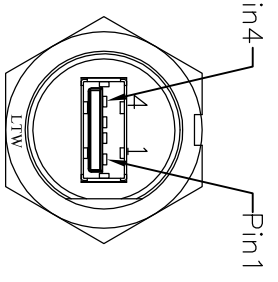


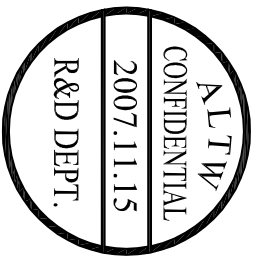
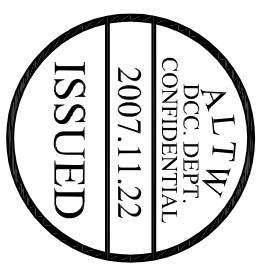
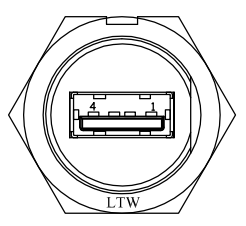
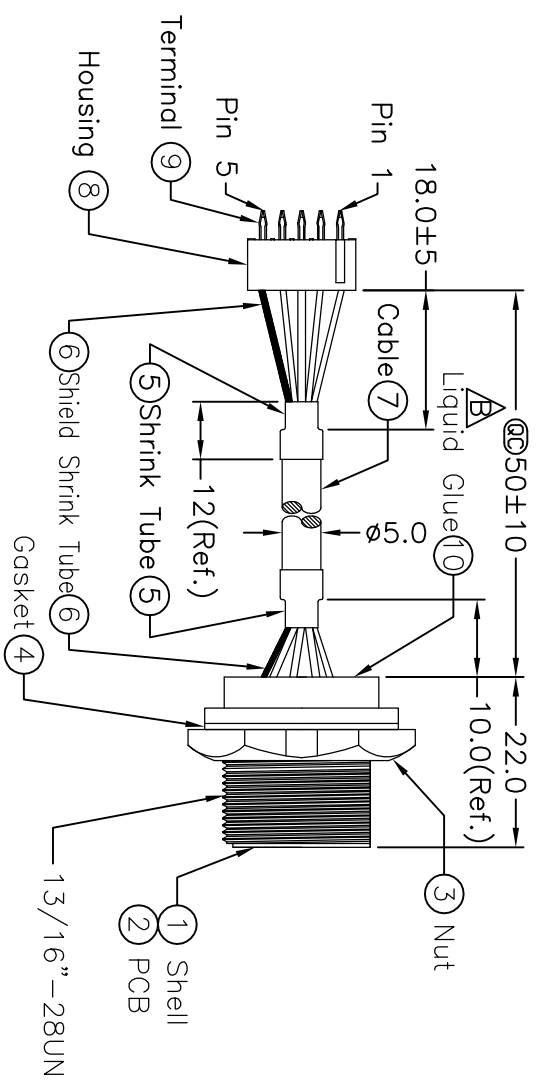
REV. 5	EQN. NO. E3-770103	DATE 2007/07/10	SIGN Rommel A. Vergara	DESCRIPTION Change Liquid Glue from LIQ-015 to LIQ-013
B	LEN-7B0137	2007/11/15	Gao Ling	Modify Panel Thickness
C				



PCB Layout



Pin Assignments
Front View



5	Drain	Shield
4	Black 24AWG	4
3	Green 28AWG	3
2	White 28AWG	2
1	Red 24AWG	1
	Housing	Wire Color
		Conn.

Pin Out

- Note:
- * @@ Important Dimension.
 - * Waterproof Rate: IP68
 - * Shell: Black, ABS 94V-0
 - * Connector: USB A Female, Gold Plated
 - * Gasket: Black, EPDM
 - * Panel Nut: Black, Nylon+GF
 - * Liquid Glue: Black
 - * Housing: PH=2.50mm
 - * Cable: USB2.0 28AWG*1P+24AWG*2C+AL/My+D+B, Black PVC Jacket Resist UV, OD=5.0mm
 - * Use with waterproof cap or dust cap
 - * Use without waterproof cap or dust cap
 - * For Panel Thickness Max: 2.8mm
 - * For Panel Thickness Max: 4.0mm

UNIT:mm	
TOLERANCE	
.X	±0.25
.XX	±0.1
.XXX	±0.05
ANGLES	±1°

TITLE	Panel Screw	
SCALE	20A M Conn. F Pin	
REV.	C	SIZE A4
	SHEET 1	OF 1
	@@ :inspection item	

Amphenol LTW
安費諾亮泰企業股份有限公司

ITEM NO	UA-20PMFP-SC8002
DWG NO	UA-20PMFP-SC8002
CUSTOMER	ALTW

DRAWN BY	Gao Ling	DATE	2007/11/15
CHECKED BY	Jill	DATE	2007/11/19
APPROVED BY	Lion	DATE	2007/11/20