

## GUARDS



**Full Guard Single - 522-B14**



**Full Guard Twin - 522-B12**



**Full Guard Single (Stainless Steel) - 522-K26**

## Environmental Ratings:

### Key Benefits

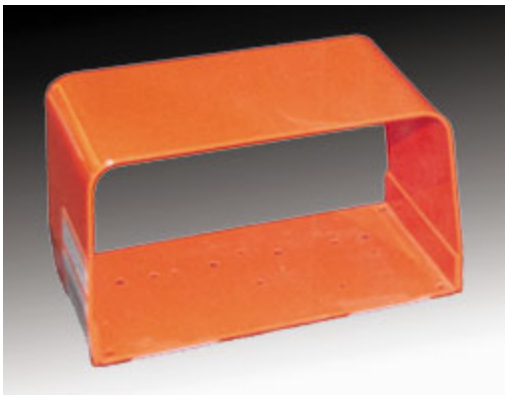
522-B14 - Full guard that can be utilized for many of our single pedal foot switches, including the Treadlite II, Compact, Classic and Clipper models. The 522-B14 is 6"D x 6"W x 4½"H, is made from steel and painted an alert orange color.

522-B12 - Full Twin guard for use with our twin foot switches such as the Clipper model #Twin 632-S. This steel guard is painted alert orange and is 6"D x 11"W x 4½"H in size.

522-K26 - This full guard has the same dimension as the 522-B14 (6"D x 6"W x 4½"H), but it is made from stainless steel for added corrosion resistance in wet applications. (We also offer our Treadlite II foot switch in a stainless steel version).

522-D28 - Over-sized full twin guard will accommodate larger work shoes because of the additional height. The steel guard is painted alert orange and is 6"D x 11"W x 6¼"H in size.

522-F28 - Over-sized single full guard gives additional height to accommodate larger work shoes. Steel guard is painted alert orange. The dimension for this guard is 6"D x 6"W x 6¼"H.



**OX Guard Twin - 522-D28**



**OX Guard Single - 522-F28**

[Request A Quote](#)

**SPECIFICATIONS**

(Special variations are available to the O.E.M. on special order on the models listed below)

**⚠ WARNING**

CATALOG NUMBER	DESCRIPTION	Dimension	Model Option
522-B14	Full Single Guard	6"D x 6"W x 4½"H	
522-B12	Full Twin Guard	6"D x 11"W x 4½"H	
522-K26	Full Single Guard (Stainless Steel)	6"D x 6"W x 4½"H	
522-F28	Over-Sized Single Guard	6"D x 6"W x 6¼"H	
522-D28	Over-Sized Twin Guard	6"D x 11"W x 6¼"H	

[Home](#) | [About](#) | [Products](#) | [Catalog](#) | [Int'l Distributors](#) | [Glossary](#) | [Support](#) | [Representative](#) | [ISO-9001](#) | [Literature](#) | [Press](#) | [Shows](#) | [Directions](#) | [Contact](#)

LINEMASTER Switch Corporation · 29 Plaine Hill Road · POB 238 · Woodstock, CT 06281-0238 · USA

Tel: 860.974.1000 Fax: 860.974.0691 or Toll-Free Fax 800.974.3668 (USA Only)

© Copyright  
Linemaster Switch Corporation  
2005