

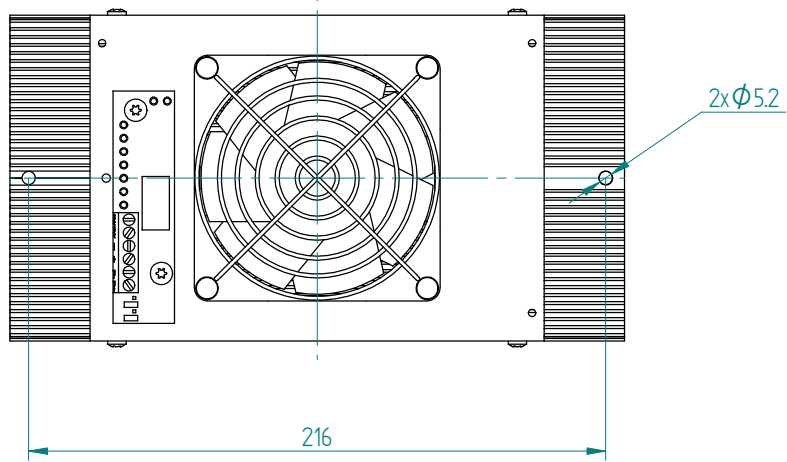
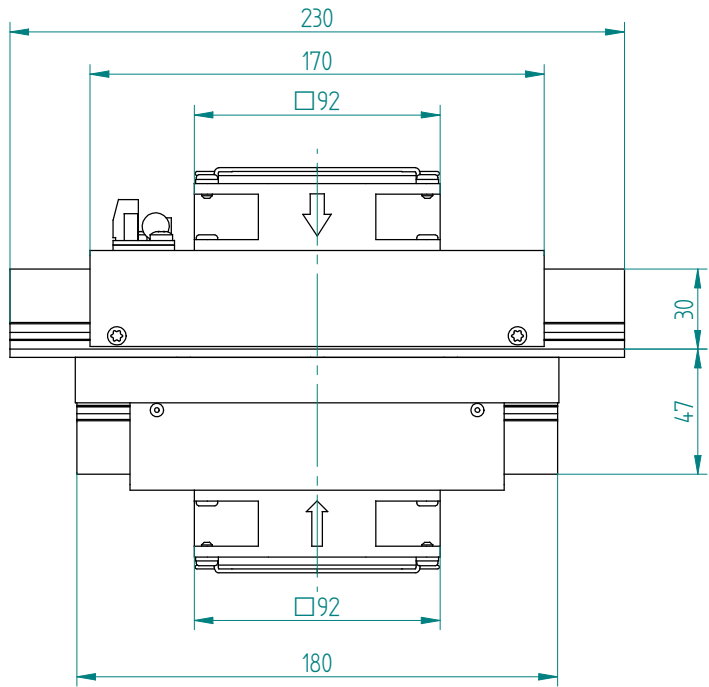


Specification: (Ta=32°C)	Code:	Description:
Heat transfer, cold side:	A	Air
Heat transfer, warm side:	A	Air
Cascade:	-	
Cooling power: [W]	070	Calculated 71 W at dT=0°C. Tolerance: ±10%.
Voltage, nominal: [VDC]	24	24 VDC.
TEM Voltage: [VDC]		Nominal: 24 VDC, Max: 30 VDC.
TEM Current: [A]		Nominal: 4.5 A, Initial: 5.2 A. All at dT=0°C. Tolerance: ±10%.
Fans, cold side:	2	L10: 52,000 hrs. at 25°C. Nominal current: 0.15 A. Voltage: 24 VDC ±10%.
Fans, warm side:	2	L10: 50,000 hrs. at 25°C. Nominal current: 0.21 A. Voltage: 24 VDC ±10%.
Temperature controller, sensor:	0	None.
Temperature control settings, trim options:	0	-
Additional controller information:		-
Temperature control position:	0	-
Options:	0	-
Overheating thermostat:		75°C ±5°C on hot side heat sink surface.
Operating temperature:		-10°C to +48°C at nominal voltage.
TE-Module(s) temperature specification:		Max. surface temperature: 80°C.
Enclosed:		-
Packing:		Individual cardboard box.

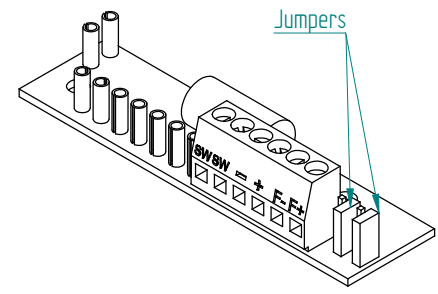
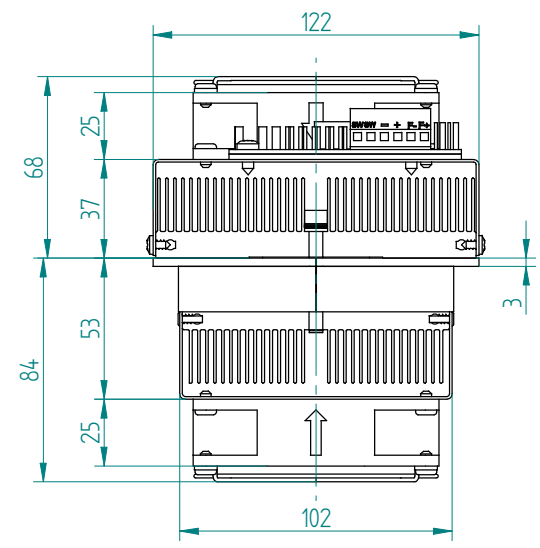
General tolerances: SS-ISO 2768-1 v
 First angle projection: 
 Dimension units: Metric: [mm]

Comment / Deviations: Hi-Pot tested 750VDC					
Designed by: A. Kim	Checked by: M. Nyman	Approved by: C. Johansson	Release date: 2011-10-05	Project: Standard	Customer:
 Laird Technologies S-43153 Molndal, Sweden tfn: +46 31 420530, fax: +46 31 247909 e-mail: info@lairdtech.com Web: www.lairdtech.com			Title: TE ASSEMBLY 24 VDC AIR - AIR		
Part nr: AA-070-24-22-00-00			Rev: 06	Version:	Scale: Size, sheet 1:2 A3, 1/51



WARM SIDE

COLD SIDE



Electrical connections:

- "+" : + TEM
- "-" : - TEM
- "F+" : + Fan(s)
- "F-" : - Fan(s)

To use single supply:
Lift the jumpers and rotate 90° to short-cut the pin pairs.
Connect the unit to "+" & "-".

Warning: Single supply not applicable in heating mode or with PWM-regulation.

General tolerances: SS-ISO 2768-1 v	First angle projection:	Dimension units: Metric: [mm]
--	-------------------------	----------------------------------

Comment / Deviations: Hi-Pot tested 750VDC					
Designed by: A. Kim	Checked by: M. Nyman	Approved by: C. Johansson	Release date: 2011-10-05	Project: Standard	Customer:
Laird Technologies S-43153 Molndal, Sweden tfn: +46 31 420530, fax: +46 31 247909 e-mail: info@lairdtech.com Web: www.lairdtech.com			Title: TE ASSEMBLY 24 VDC AIR - AIR		
			Part nr: AA-070-24-22-00-00	Rev: 06	Version:

Thermoelectric AIR conditioner - **AA-070-24-22-00-00**

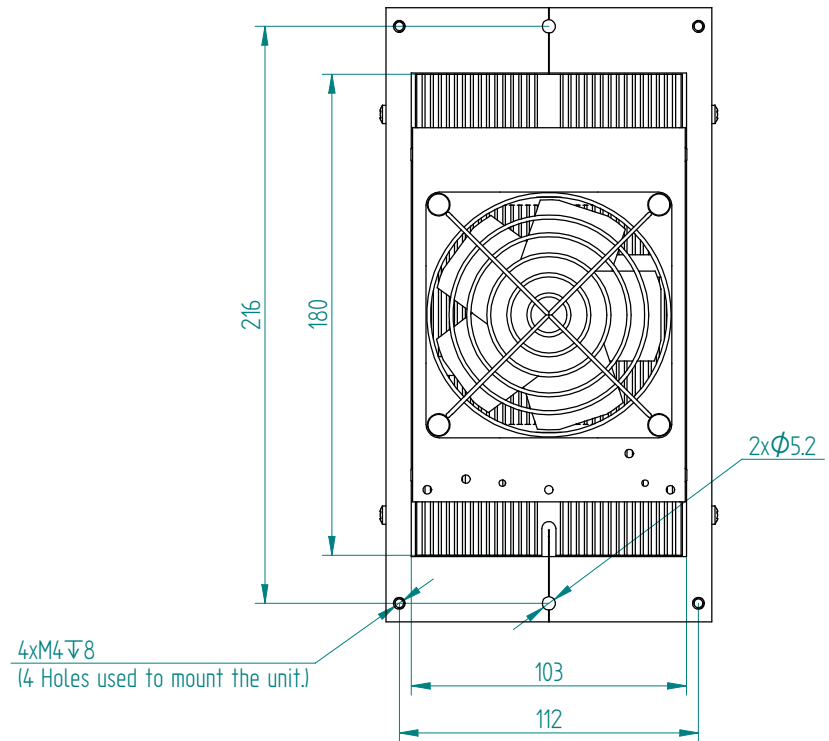
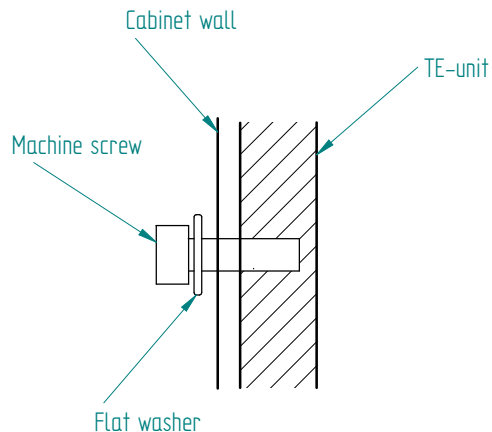
Installation and Service manual

Installation:

1. The TE assembly is mounted in a cabinet with "Warm side" mounted externally.
2. Suitable cabinet cutout is 105x182 mm.
3. Recommended for general purposes: the TE assembly is fastened with 4xM4 machine screws, 4x M4 flat washers so that the gasket material will seal off around the flange of the assembly.
4. **The TE assembly must be positioned in vertical direction (heat sink fins in vertical direction).**
5. The TE assembly must be protected from external force or violence.
6. Fuse should be placed on the incoming wires by the customer. 8 A, Fast acting or Very Fast Acting, enhanced breaking capacity. The fuse should withstand 1.3xIn for a minimum of 60 seconds. External fuse must protect the input power lines.

Service:

Fan impellers and heat sinks must be cleaned on regular intervals to reduce risk for overheating and reduction of cooling function. The interval may vary depending on environment.



General tolerances: SS-ISO 2768-1 v	First angle projection:	Dimension units: Metric: [mm]
--	-------------------------	----------------------------------

Comment / Deviations: Hi-Pot tested 750VDC					
Designed by: A. Kim	Checked by: M. Nyman	Approved by: C. Johansson	Release date: 2011-10-05	Project: Standard	Customer:
Laird Technologies S-43153 Molndal, Sweden tfn: +46 31 420530, fax: +46 31 247909 e-mail: info@lairdtech.com Web: www.lairdtech.com			Title: TE ASSEMBLY 24 VDC AIR - AIR		
Part nr: AA-070-24-22-00-00			Rev: 06	Version:	Scale: Size, sheet 1:2 A3, 3/5