

# Sectional Terminal Blocks

## DIN (Euro-Style) Sectionals

### Hardware:

- Insulating end sections - cover the last terminal of an assembly
- Insulating partitions - for visual and electrical separation of terminals grouped on DIN rail
- 2-position jumpers - connect two adjacent terminals (middle portion snaps off to assemble)
- 12-position jumpers - connects up to 12 adjacent terminals (middle portion snaps off to assemble)
- Jumper can be easily cut to length to connect smaller assemblies
- Connecting strap - for linking two adjacent 12-pole jumpers
- Safety cover - cover with warning label for line terminals which cannot be disconnected
- End brackets - anchors on both ends of terminal assemblies to hold the assembly in place
- DIN rail - standard 35 x 7.5 mm DIN rail, cut in 2 meter lengths with slots for mounting (steel, zinc plated)

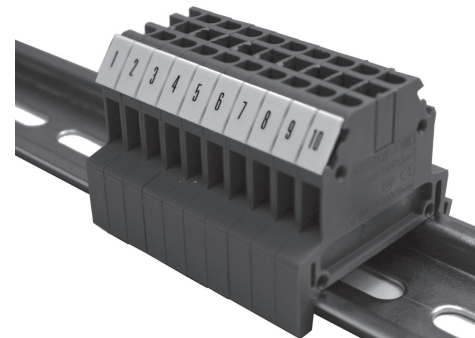
	MIK3	MIK5	MIK10	MIK16	MIK25	MIKTS4	MIKS15
<b>Hardware</b>							
Insulating End Sections	MIW2	MIW4	MIW16	MIW16	MIW50	MIW4	-
Insulating Partitions	MIW4	MIW16	MIW50	MIW50	MIW70	-	MIW50
2-Position Jumper	MVB2-2	MVB4-2	MVB6-2	MVB16-2	MVB25	-	-
12-Position Jumper	MVB2-12	MVB4-12	MVB6-12	MVB16-12	-	-	-
Connecting Strap	MVL2-2	MVL4-2	MVL6-2	MVL16-2	MVL25	-	-
Safety Cover	MKAW2		MKAW10	MKAW16	MKAW25	-	-
End Bracket/Anchor	MSK35						
DIN Rail	MN35-2						

MSK35 - End Bracket Securing Torque 7-9 lb-in (.8-1 N-m)

## Universal Identification Labels Type MSH

### Specifications:

- Available plain, with numbers, letters or symbols
- Can be labeled vertically or horizontally
- Single label MSH 5 can be used for all sizes
- MSH5 & 6 are sold in ten strips of ten, MSH8 & 10 are sold in ten strips of five
- RoHS compliant



### Ordering Code:

