

Product Data Sheet

marathon[™]
Special Products

16XX SC

Replace XX with 02, 04, 06, 08 or 12 for number of poles
1600 Series with Short Circuiting Bar

30 Amps, 600 Volts AC/DC
(Unprepared Wire)

or

75 Amps, 600 Volts AC/DC when wired
with crimp type ring, spade or fork
terminal

21/32" Line to Line Spacing

Wire Range (with unprepared wire):

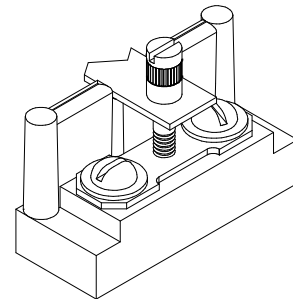
#10 – 22 AWG Copper

Size and number of lugged wires investigated in end use.

Application torque – 20 in.lb.



4 pole shown



Short Circuiting Bar with
Brass Shorting Pin

Four (4) screws supplied per part for 1604, 1606, 1608 and 1612. Two (2) screws for 1602

Shorting Bar is designed for current transformer application. It is NOT intended to be used as a jumper for power circuits

Electrical Ratings:

- 30A (unprepared wire)
- 75A (when wired with crimp type ring, spade or fork terminal)
- 600 Volts AC/DC (UL 1059 Class C, User Group - General Industrial)
- Factory and Field Wiring
- Use Listed terminals and tools for field installation of prepared conductors

Mechanical Ratings:

- Maximum insulator base temperature: 150°C (302°F) UL RTI
- Storage and transportation temperature range: -35°C to 125°C (-31°F to 257°F)
- Flammability rating of insulator base: UL 94 V-0

Materials:

- Connector: Brass, nickel plated
- Insulator base: phenolic
- Screws: Brass, nickel plated, #10-32 combination Phillips-slotted standard
- Marking Strip: Vinyl (white)
- Marking strip anchor screws: Steel, zinc plated
- Short Circuit Bar: Brass, tin plated
- Insert: Brass
- Shorting Pin: Brass, nickel plated (supplied loose)

Agency Approvals:

- UL Recognized, UL 1059 Terminal Block Standard, File No. XCFR2.E62806
- CSA Certified, CSA C22.2 No. 158, File No. LR19766
- CE compliant to IEC 60947-7-1
- RoHS Compliant

- Panel mountable: #10 fastener, torque to 25-30 in. lbs.

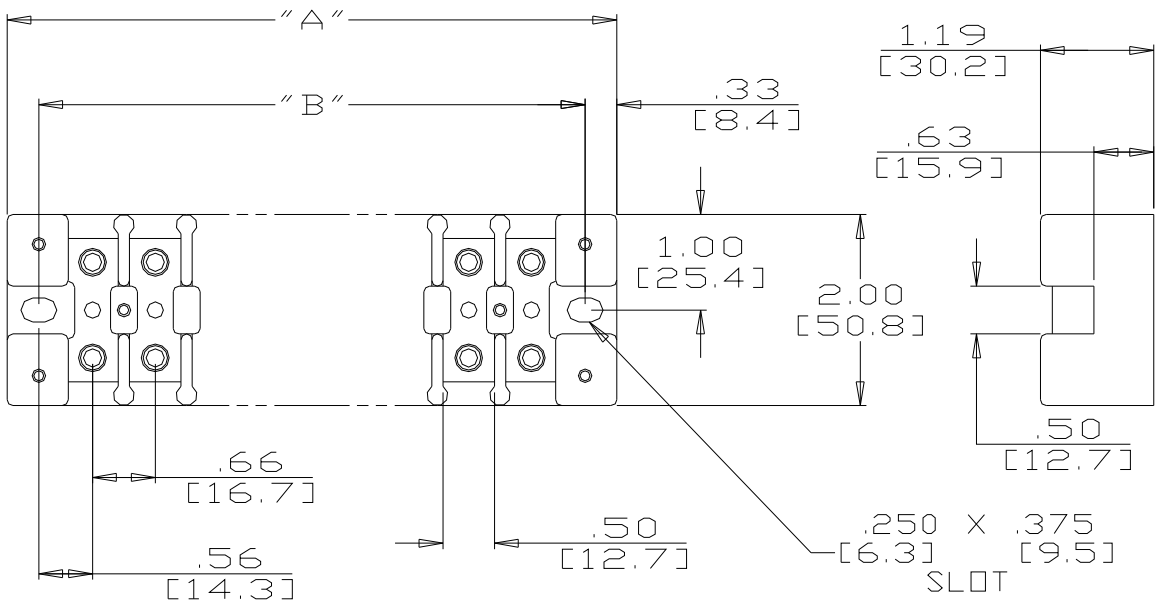
Accessories:

- Additional Shorting Pins: 9616901
- Slotted Screw available
- Printing Available on Marking Strip:



Note If marking strip is ordered separately order MS 16XX Side

Consult factory for custom printed applications



Catalog #	# of Poles	A	B
1604	4	3.75	3.09
1606	6	5.06	4.41
1608	8	6.38	5.72
1612	12	9.00	8.34

MM = Dim X 25.4

WWW.MARATHONSP.COM
1-419-352-8441