

Tool Pouches, Carriers, Belts & Suspenders

Just as Klein offers a variety of tools designed for specific needs, Klein offers a variety of tool pouches, carriers, belts, and suspenders that suit virtually every preference and need.

Tool Pouches, Carriers,
Belts & Suspenders



FOR Professionals... Since 1857®



Tool Pouches

7-Pocket Tool Pouch

- Soft, pliable, white leather.
- Riveted to assure long life.
- Heavy-duty chain tape thong securely fastened with a rivet.

Cat. No.	Pockets (Total Number)	Specialty Add-Ons	Belt Connection	Belt Width	Overall Size	Weight (lbs.)
5166	7	chain tape thong	tunnel	2-1/4" (57 mm)	7" x 9-1/2" (178 mm x 241 mm)	.92



5166

8-Pocket Tool Pouch

- Soft, pliable, white leather.
- Roomy pouch for electricians and maintenance workers.
- Riveted and stitched for extra durability.
- Heavy-duty chain tape thong securely fastened with a rivet.
- Stainless steel clip holder accepts most tape clips up to 1-1/4" wide.

Cat. No.	Pockets (Total Number)	Specialty Add-Ons	Belt Connection	Belt Width	Overall Size	Weight (lbs.)
5178	8	knife snap, chain tape thong, metal tape measure holder	tunnel	2-1/2" (64 mm)	11" x 10" (279 mm x 254 mm)	1.03



5178

Single-Pocket Tool Pouch

- Leather construction.
- Perfect for carrying pliers and other tools in the hip pocket.
- Prevents wear and tearing of clothes, discomfort, and possible injury.
- Riveted to assure long life.



5111

Cat. No.	Pockets (Total Number)	Overall Size	Weight (lbs.)
5111	1	4-1/2" x 7" (114 mm x 178 mm)	.23

Strap-Leather Bag

- Leather construction.
- Soft, pliable cushion-leather gussets allow expansion to 3-1/4" (83 mm).
- Ventilating eyelet in bottom.



5140K

Cat. No.	Belt Connection	Belt Capacity	Length	Width	Depth	Weight (lbs.)
5140K	latigo thongs	up to 3" (76 mm) wide	7" (178 mm)	9" (229 mm)	3-1/4" (83 mm)	.65

3-Pocket Utility Pouch

- Leather construction.
- Features 1" (25 mm) reinforced gusset.
- Has 2" (51 mm) outside pockets.
- Riveted for extra durability.

Cat. No.	Pockets (Total Number)	Belt Connection	Belt Width	Overall Size	Weight (lbs.)
5145	3	tunnel	1" (25 mm)	5-1/4" x 7" (133 mm x 178 mm)	.46



5145

All dimensions are in inches and (millimeters).



4-Pocket Tool Pouch

- *Leather construction.*
- *Riveted and stitched for extra durability.*

Cat. No.	Pockets (Total Number)	Specialty Add-Ons	Belt Connection	Belt Width	Overall Size	Weight (lbs.)
5119	4	knife snap	slotted	2" (51 mm)	6-1/2" x 8-1/2" (165 mm x 216 mm)	.39



5119

5-Pocket Tool Pouches

- *Cat. No. 5125 is constructed of #4 canvas, leather back, pockets and loops.*
- *Cat. No. 5125L is constructed of leather.*
- *General-purpose pouches.*
- *Heavy-duty chain tape thong securely fastened with a rivet.*
- *Riveted and stitched for extra durability.*



5125



5125L

Cat. No.	Pockets (Total Number)	Specialty Add-Ons	Belt Connection	Belt Width	Overall Size	Weight (lbs.)
5125	5	leather tape thong	loops	2-1/4" (57 mm)	7-1/2" x 8-1/2" (191 mm x 216 mm)	.63
5125L	5	leather tape thong	loops	2-1/4" (57 mm)	7-1/2" x 8-1/2" (191 mm x 216 mm)	.75

5-Pocket Tool Pouch

- *Leather construction.*
- *Riveted to assure long life.*

Cat. No.	Pockets (Total Number)	Specialty Add-Ons	Belt Connection	Belt Width	Overall Size	Weight (lbs.)
5126	5	knife snap	slotted	2" (51 mm)	6" x 8-3/4" (152 mm x 222 mm)	.74



5126



Tool Pouches

6-Pocket Tool Pouches

- Leather construction.
- Riveted to assure long life.

Cat. No.	Pockets (Total Number)	Specialty Add-Ons	Belt Connection	Belt Width	Overall Size	Weight (lbs.)
5127	6	knife snap	slotted	2" (51 mm)	7" x 10" (178 mm x 254 mm)	.79
5127T	6	knife snap	tunnel	2-1/2" (64 mm)	7" x 10" (178 mm x 254 mm)	.87



5127



5127T

6-Pocket Tool Pouches

- Leather construction.
- Contoured to fit the hip for added comfort.
- Riveted to assure long life.
- Heavy-duty chain tape thong securely fastened with a rivet.

Cat. No.	Pockets (Total Number)	Specialty Add-Ons	Belt Connection	Belt Width	Overall Size	Weight (lbs.)
5168	6	knife snap, metal tape thong	slotted	2" (51 mm)	9" x 11" (229 mm x 279 mm)	1.00



5168

8-Pocket Extra-Capacity Tool Pouch

- Leather construction.
- Extra-capacity multi-purpose pouch.
- Stitched and riveted.

Cat. No.	Pockets (Total Number)	Specialty Add-Ons	Belt Connection	Belt Width	Overall Size	Weight (lbs.)
5162T	8	knife snap, leather tape thong	tunnel	3" (76 mm)	8-1/2" x 10-3/4" (216 mm x 273 mm)	1.71



5162T

8-Pocket Tool Pouches

- Leather construction.
- Riveted to assure long life.

Cat. No.	Pockets (Total Number)	Specialty Add-Ons	Belt Connection	Belt Width	Overall Size	Weight (lbs.)
5164	8	knife snap	slotted	2" (51 mm)	6-3/4" x 9-3/4" (171 mm x 248 mm)	1.16
5164T	8	knife snap	tunnel	2-1/2" (64 mm)	6-3/4" x 9-3/4" (171 mm x 248 mm)	1.21



5164



5164T

All dimensions are in inches and (millimeters).



10-Pocket Tool Pouch

- Leather construction.
- Riveted and stitched.

Cat. No.	Pockets (Total Number)	Specialty Add-Ons	Belt Connection	Belt Width	Overall Size	Weight (lbs.)
5165	10	knife snap	slotted	2" (51 mm)	10" x 10" (254 mm x 254 mm)	1.26



5165

10-Pocket Tool Pouch

- Leather construction.
- Versatile pouch favored by many telephone installers.
- Riveted throughout to assure long life.
- Ten separate compartments with places for a wide variety of pliers, screwdrivers, and other tools.
- Slotted-leather tape thong (allows easy removal of 1" I.D. tape rolls).

Cat. No.	Pockets (Total Number)	Specialty Add-Ons	Belt Connection	Belt Width	Overall Size	Weight (lbs.)
5190	10	leather tape thong	slotted	1-3/4" (44 mm)	6" x 8-3/4" (152 mm x 222 mm)	.75



5190

11-Pocket Tool Pouch

- Leather construction.
- Multi-pocketed pouch made for electricians and other professionals.
- Riveted and stitched.
- Stainless steel clip holder accepts most tape clips up to 1-1/4" wide.
- Heavy-duty chain tape thong securely fastened with a rivet.

Cat. No.	Pockets (Total Number)	Specialty Add-Ons	Belt Connection	Belt Width	Overall Size	Weight (lbs.)
5167	11	knife snap, chain tape thong, metal tape measure holder	slotted	2-3/4" (70 mm)	10" x 10-1/2" (254 mm x 267 mm)	1.43



5167

All-Purpose Bag

- Soft, pliable cushion leather construction.
- Bag is ideal for carrying loose tools and small parts.
- Adjustable belt strap for attaching to belts.



5146

Cat. No.	Belt Connection	Belt Capacity	Length	Width	Depth	Weight (lbs.)
5146	belt strap	up to 3" (76 mm) wide	9" (229 mm)	8" (203 mm)	3" (76 mm)	.60

Leather Bolt Bag

- Split-leather construction.
- Bolt bag with bull-pin loop on each side.



42247

Cat. No.	Belt Connection	Belt Capacity	Length	Width	Depth	Weight (lbs.)
42247	tunnel	up to 3" (76 mm) wide	5" (127 mm)	8-1/2" (216 mm)	8-1/2" (216 mm)	.75



Tool Pouches

Extra-Large Canvas Utility Bag

- Heavy No. 8 natural canvas.
- Includes interior pocket.
- Inside bottom is reinforced with cushion leather & ventilating eyelet.
- Metal snaps provided on loops for easy attachment to belts up to 3" (76 mm) wide.
- Top edge reinforced with 1/4" (6 mm) rope.

Cat. No.	Belt Connection	Belt Capacity	Length	Width	Depth	Weight (lbs.)
5141P	loops	up to 3" (76 mm) wide	10" (254 mm)	12" (305 mm)	5" (127 mm)	.88



5141P

Canvas Utility Bags

- Heavy No. 8 natural canvas.
- Top edge reinforced with 1/4" (6 mm) rope.
- Metal snaps provided on loops for easy attachment to belts up to 3" (76 mm) wide.
- Inside bottom is reinforced with cushion leather & ventilating eyelet.
- Cat. No. 5142P version includes interior pocket.

Cat. No.	Belt Connection	Belt Capacity	Length	Width	Top Diameter	Weight (lbs.)
5142	loops	up to 3" (76 mm) wide	9" (229 mm)	10" (254 mm)	8" x 3" (203 mm x 76 mm)	.60
5142P	loops	up to 3" (76 mm) wide	9" (229 mm)	10" (254 mm)	8" x 3" (203 mm x 76 mm)	.65



5142

Water-Repellent Canvas Pouches

- One-piece tan 12-oz. water-repellent mildew resistant canvas.
- Top edge reinforced with 1/4" (6 mm) rope.

Cat. No.	Belt Connection	Belt Capacity	Length	Width	Top Diameter	Weight (lbs.)
5179	loops	up to 4-1/2" (114 mm) wide	7-1/2" (191 mm)	3-1/2" (89 mm)	7" (178 mm)	.30
5179S	snap	up to 4-1/2" (114 mm) wide	7-1/2" (191 mm)	3-1/2" (89 mm)	7" (178 mm)	.30



5179S



5179

Bull-Pin and Bolt Bags

- No. 4 canvas or split-leather with double bottom.
- Bolt bag with bull-pin loop on each side.

Cat. No.	Belt Connection	Belt Capacity	Length	Width	Depth	Weight (lbs.)
Canvas						
5416	loops	up to 3" (76 mm) wide	5" (127 mm)	9" (229 mm)	10" (254 mm)	.85
5416T	tunnel	up to 3" (76 mm) wide	5" (127 mm)	9" (229 mm)	10" (254 mm)	.90
Leather						
5416L	tunnel	up to 3" (76 mm) wide	5" (127 mm)	9" (229 mm)	10" (254 mm)	1.10



5416



5416L

All dimensions are in inches and (millimeters).



6-Pocket Nail/Screw and Tool Pouch

- Split-leather construction.
- Heavy hammer-loops on both sides, allowing for convenient use by right- or left-handed workers.
- Riveted and stitched for extra durability.

Cat. No.	Pockets (Total Number)	Specialty Add-Ons	Belt Connection	Belt Width	Overall Size	Weight (lbs.)
42241	6	2 hammer loops	tunnel	3" (76 mm)	11" x 11-3/4" (279 mm x 298 mm)	.86



42241

Tool Combination Aprons

One-Piece Nail/Screw and Tool-Pouch Apron

- Split-leather construction.
- Versatile, roomy double-pouch apron for construction workers, carpenters, and other professionals.
- Riveted and stitched for extra durability.
- Four slots for punches or nail sets.
- Two heavy-duty hammer loops.
- Double-pouch design allows unrestricted leg movement.
- Apron is reinforced throughout with rivets.
- The large pockets and nailbolt pockets have rolled-over, doubled edges for long wear.
- Heavy-duty 2" (51 mm) wide polypropylene web belt has rugged metal buckle.



42242

Cat. No.	Pockets (Total Number)	Size Adjustable	Weight (lbs.)
42242	10	32" - 48" (813 mm - 1219 mm)	1.81

Nail/Screw and Tool-Pouch Combinations

- Split-leather construction.
- Large pockets have rolled-over doubled edges for extra-long life.
- All pouches slide along belt for convenient working position.
- Left- and right-hand nail-and-tool pouches.
- Heavy-duty 2" (51 mm) wide polypropylene web belt has rugged metal buckle.
- Tape-rule holder for 20' and 25' tape measures with belt clips.
- Heavy hammer loops.



42244

Cat. No.	Description	Weight (lbs.)
42244	complete combination: belt (Cat. No. 5225 mm), left-hand (Cat. No. 42246 mm) and right-hand (Cat. No. 42245 mm) nail-and-tool pouches, and tape-rule holder (Cat. No. 5195 mm)	2.02
42245	right-hand nail-and-tool pouch only. Tunnel loop fits any belt up to 3" (76 mm) width.	.70
42246	left-hand nail-and-tool pouch only. Tunnel loop fits any belt up to 3" (76 mm) width.	.72
5225	poly-web belt only. Adjustable from 32" (813 mm) to 48" (1219 mm). Tunnel loop fits any belt up to 3" (76 mm) width.	.42
5195	tape-rule holder only for 20' and 25' tapes.	.18

All dimensions are in inches and (millimeters).

⚠ WARNING: The tool belts shown on this page are not occupational protective belts.



Tool Holders

Scissors Holder – Tunnel

- Leather construction.
- Designed for Klein electrician's scissors, industrial shears, snips and bent trimmers.
- Riveted and stitched for extra durability.



5100S

Cat. No.	Belt Connection	Belt Width	Overall Size	Weight (lbs.)
5100S	tunnel	up to 2" (50.8)	Small	2.3
5100M	tunnel	up to 2" (50.8)	Medium	3.2
5100L	tunnel	up to 2" (50.8)	Large	4.0

Scissors Holder – Slotted

- Leather construction.
- Riveted with clip on back for attaching to belt.
- Designed to hold Klein electrician's scissors, Cat. Nos. 2100-5 and 2100-7.
- Riveted to assure long life.



5101

Cat. No.	Belt Connection	Belt Width	Overall Size	Weight (lbs.)
5101	metal clip	up to 1-1/2" (38 mm)	2" x 7" (51 mm x 178 mm)	.11

Scissors and Cable-Splicer's Knife Holders

- Leather construction.
- Specially designed to hold a pair of Klein electrician's scissors (Cat. Nos. 2100-5 or 2100-7, 2100-8, 2100-9), and Cat. No. 44200 cable-splicer's knife.
- Riveted and stitched for extra durability.



5187

5187T

Cat. No.	Belt Connection	Belt Width	Overall Size	Weight (lbs.)
5187	slotted	up to 2-1/4" (57 mm)	2" x 7-1/4" (51 mm x 184 mm)	.11
5187T	tunnel	up to 2-1/4" (57 mm)	2" x 7-1/4" (51 mm x 184 mm)	.13

Lineman's Knife Holder

- Leather construction.
- Designed for Klein skinning knives Cat. Nos. 1570-3, 1570-3LR, and 1560-3.
- Riveted to assure long life.



5163

Cat. No.	Belt Connection	Belt Width	Overall Size	Weight (lbs.)
5163	slotted	up to 2" (51 mm)	3-1/2" x 9-3/8" (89 mm x 238 mm)	.21

Knife Holder

- Leather construction.
- Designed for utility knives and Klein Cat. Nos. 44100 and 44105.
- Corners riveted and stitched for extra durability.

Cat. No.	Belt Connection	Belt Width	Overall Size	Weight (lbs.)
5185	slotted	up to 2-1/2" (64 mm)	2-5/8" x 8-1/4" (67 mm x 210 mm)	.11



5185

Cable-Splicer's Knife Holders

- Leather construction.
- Designed to hold Cat. No. 44200 cable-splicer's knife.
- Riveted and stitched for extra durability.

Cat. No.	Belt Connection	Belt Width	Overall Size	Weight (lbs.)
5188	slotted	up to 2-1/4" (57 mm)	2-1/8" x 7-3/4" (54 mm x 197 mm)	.08
5188T	tunnel	up to 2-1/4" (57 mm)	2-1/8" x 7-1/4" (54 mm x 184 mm)	.11



5188



5188T

All dimensions are in inches and (millimeters).



Pliers Holders – Open Bottom

- Leather construction.
- Long-nose pliers may protrude through opening at bottom.
- Riveted to assure long life.
- Cat. No. 5107-6 holds 6" (152 mm) or 7" (178 mm) long-nose or diagonal-cutting pliers.
- Cat. No. 5107-9 holds 8" (203 mm) or 9" (229 mm) long-nose or diagonal-cutting pliers.



Cat. No.	Belt Connection	Belt Width	Overall Size	Weight (lbs.)
5107-6	slotted	up to 2" (51 mm)	3-1/2" x 8-1/2" (89 mm x 216 mm)	.17
5107-9	slotted	up to 2" (51 mm)	3-3/4" x 11" (95 mm x 279 mm)	.26

Pliers Holder – Closed Bottom

- Leather construction.
- Nose of pliers does not protrude from closed bottom.
- Bottom is vented to prevent collection of dirt or water.
- Riveted to assure long life.
- Holds 7", 8", or 9" side-cutting pliers.



Cat. No.	Belt Connection	Belt Width	Overall Size	Weight (lbs.)
5112	slotted	up to 2" (51 mm) wide	3-1/4" x 11" (83 mm x 279 mm)	.21

Pliers, Folding Rule, Screwdriver, and Wrench Holder

- Leather construction.
- No exposed rivets in back.
- Riveted to assure long life.
- Pockets for 7", 8", and 9" side-cutting pliers, most screwdrivers, 6' folding rules, and open-end wrenches from 9/16" to 13/16".
- Nickel plated alloy snap.



Cat. No.	Pockets (Total Number)	Belt Connection	Belt Width	Overall Size	Weight (lbs.)
5118C	4	slotted	up to 2" (51 mm)	6-1/2" x 11" (165 mm x 279 mm)	.78

Pliers, Rule, and Screwdriver Holders

- Leather construction.
- 3 pockets for pliers, folding rule, and screwdriver.
- S5118PRS has a two-way knife snap.
- Riveted to assure long life.
- Pockets for 7", 8", and 9" side-cutting pliers, most screwdrivers, 6' folding rules, and open end wrenches from 9/16" to 13/16".



Cat. No.	Belt Connection	Belt Width	Overall Size	Weight (lbs.)
5118PRS	slotted	up to 2" (51 mm)	6-3/4" x 10" (171 mm x 254 mm)	.49
S5118PRS	slotted	up to 2" (51 mm)	6-3/4" x 10" (171 mm x 254 mm)	.56

4 and 5 Pocket Pouches Lineman's Pouches

- Leather construction with double leather back for durability.
- Rivet hole for belt connection.
- Riveted to assure long life.
- Includes knife snap, pockets for pliers, most screwdrivers, 6' folding rule and open ended wrenches.

NEW!



Cat. No.	Pockets (Total No.)	Belt Connection	Approx. Overall Size	Weight (lbs.)
5118P5	5	rivet hole	10" x 11" (254 mm x 279 mm)	1.13
5118P4	4	rivet hole	8" x 11" (203 mm x 279 mm)	.91

All dimensions are in inches and (millimeters).



Tool Holders

Pliers and Folding Rule Holders

- Leather construction.
- Riveted to assure long life.
- Pockets for 7", 8", or 9" side-cutting pliers and 6-ft. folding rule.

Cat. No.	Pockets (Total Number)	Belt Connection	Belt Width	Overall Size	Weight (lbs.)
5118R	2	slotted	up to 2" (51 mm)	4-3/4" x 8" (121 mm x 203 mm)	.43
5118RT	2	tunnel	up to 3-3/4" (95 mm)	4-1/2" x 12-1/2" (114 mm x 318 mm)	.50



5118R

5118RT

Pliers and Screwdriver Holder

- Leather construction.
- Riveted to assure long life.
- Pockets for 7", 8", or 9" side-cutting pliers and most screwdriver sizes.

Cat. No.	Pockets (Total Number)	Belt Connection	Belt Width	Overall Size	Weight (lbs.)
5118S	2	slotted	up to 2" (51 mm)	4-1/4" x 10-3/4" (108 mm x 273 mm)	.35



5118S

Hammer Holders

- Leather construction.
- Heavy-metal hammer loop riveted to panel.
- Riveted and stitched for extra durability.
- Holds all hammers except lineman's.

Cat. No.	Belt Connection	Belt Width	Overall Size	Weight (lbs.)
5456	slotted	up to 2-1/2" (64 mm)	4-5/16" x 7-7/8" (110 mm x 200 mm)	.33
5456T	tunnel	up to 4" (102 mm)	4-5/16" x 10" (110 mm x 254 mm)	.42
5456TS	tunnel	up to 4" (102 mm)	4-5/16" x 10" (110 mm x 254 mm)	.42



5456

5456T

5456TS

Flashlight Holder

- Leather construction.
- Designed for a standard two-cell flashlight.
- Riveted to assure long life.

Cat. No.	Belt Connection	Belt Width	Overall Size	Weight (lbs.)
5129	slotted	up to 2-1/4" (44 mm)	3" x 9-1/2" (76 mm x 241 mm)	.22



5129



Tape-Rule Holders

- Leather construction.
- Cut-out sides for easy access to tape.
- Slotted for attaching to belts up to 2-1/2" (63 mm) wide.
- Riveted to assure long life.

Cat. No.	Description	Overall Size	Weight (lbs.)
5194	small	4" x 6" (102 mm x 152 mm)	.16
5195	medium	4-1/2" x 7" (114 mm x 178 mm)	.18
5196	large	5" x 7" (127 mm x 178 mm)	.21

Klein Tape-Rule Sizing Guide

Small	Medium	Large
908-12	908-16	908-25
	915-26	908-7.5ME
	917-16	908-30
	918-16RE	916-25RE
	925-16	916-7.5ME-RE
		916-30RE
		917-25
		917-7.5ME
		918-25RE
		918-7.5ME-RE
		918-30RE
		925-25
		925-7.5ME
		928-25HV



5195

Tape-Rule Holder

- Leather construction.
- Designed for tape-rules equipped with belt clips.
- No need to remove belt or harness; just loop holder over a belt or harness up to 3" wide and snap it closed.
- Stainless steel clip holder accepts most tape clips up to 1-1/4" wide.



5197

Cat. No.	Belt Connection	Belt Width	Overall Size	Weight (lbs.)
5197	tunnel with snaps	up to 4" (102 mm)	2-3/4" x 6" (70 mm x 152 mm)	.19

Erection Wrench Holder

- Cotton web tunnel loop and leather construction.
- Holds two erection wrenches.
- Riveted to assure long life.
- Holds erection wrenches and adjustable head construction wrench Cat. No. 3239.



5461T

Cat. No.	Belt Connection	Belt Width	Overall Size	Weight (lbs.)
5461T	cotton web tunnel	up to 2" (51 mm)	6" x 10" (152 mm x 254 mm)	.26

Bull-Pin Holders

- Leather construction.
- Holders for Klein bull pins.
- Riveted to assure long life.
- Holds all standard bull pins.



5417

5417T

Cat. No.	Belt Connection	Belt Width	Overall Size	Weight (lbs.)
5417	slotted	up to 2" (51 mm)	3-1/4" x 11" (83 mm x 279 mm)	.22
5417T	tunnel	up to 3-1/2" (89 mm)	3-1/4" x 12-1/4" (83 mm x 311 mm)	.32

Erection Wrench Holders

- Leather construction.
- Has tool slots for two erection wrenches.
- Tunnel loop on Cat. No. 5459T is riveted to assure long life.
- Holds erection wrenches and adjustable head construction wrench Cat. No. 3239.



5460



5459T

Cat. No.	Belt Connection	Belt Width	Overall Size	Weight (lbs.)
5460	slotted	up to 2" (51 mm)	6" x 8-1/2" (152 mm x 216 mm)	.19
5459T	tunnel	up to 3-1/2" (89 mm) or to slide over D-rings, buckles, and other accessories	6" x 9-1/2" (152 mm x 241 mm)	.32

Tape Thong

- Leather strap with fiber bar.
- Fits all standard electrical tape rolls.

Cat. No.	Belt Connection	Length	Weight (lbs.)
5130	slotted	12" (305 mm)	.03



5130

All dimensions are in inches and (millimeters).



Tool Holders

Tie-Wire Reel Pad

- Worn on the belt under the Klein tie-wire reel.
- Made of 3/16" (5 mm) thick rigging leather.
- Slots accommodate belts up to 2" (51 mm) wide.
- Underside has a sponge-rubber pad to minimize hip fatigue.
- Holds Cat. No. 27400 tie-wire reel.
- To be used with Cat. Nos. 5415 or 5420 belts.



27450

Cat. No.	Length	Width	Weight (lbs.)
27450	7" (178 mm)	7" (178 mm)	.300

Tie-wire reel available on page 204. Ironworker's heavy-duty tie-wire belts available on page 161.

Two-Way Knife Snap

- Leather construction.
- Screw-type rivets for easy attachment to belts.



5131

Cat. No.	Belt Connection	Length	Weight (lbs.)
5131	screw rivets	4-1/2" (114 mm)	.10

Snap Loop

- Leather construction.
- Designed for tools with hang holes.
- Loop with snap hook for carrying an adjustable wrench, welder's igniter or other tool with hang hole.
- Riveted to assure long life.



5458

Cat. No.	Belt Connection	Belt Width	Overall Size	Weight (lbs.)
5458	slides on	up to 4" (102 mm)	1-1/2" x 8-1/2" (38 mm x 216 mm)	.15

Tool Guards

Tool Guards



5507

- Protect both tool and user with a Klein guard for your edged tools.
- Made of 1/16" (1.6 mm) vulcanized hard fiber, securely riveted and equipped with adjustable web straps to hold the tool.

Cat. No.	Description	Weight (lbs.)
5507	pole pruning-saw guard	.40

Axe Guard



5509

- Protect both tool and user with a Klein guard for your edged tools.
- Made of 1/16" (1.6 mm) vulcanized hard fiber, securely riveted and equipped with adjustable web straps to hold the tool.

Cat. No.	Description	Weight (lbs.)
5509	axe guard	.22

Splitting-Knife Guards

- Leather construction.

Cat. No.	Description	Weight (lbs.)
5574L	leather splitting or chipping-knife guard. Fits Klein knife, Cat. No. 1515-1	.13
5574S	leather splitting or chipping-knife guard. Fits Klein knife, Cat. No. 1515-S	.05



5574L



5574S

All dimensions are in inches and (millimeters).



Features:

Constructed of double layered 1000 denier Cordura® Nylon.

Double nylon-stitched and rivet reinforced for extra durability.

Lightweight and comfortable in warm climates, soft and pliable in cold climates.

Oversized pockets and reinforced bottom for extra carrying capacity, as well as durability.

PowerLine™ Series

Exceptional resistance to abrasion, punctures, and tearing.

No break-in period; naturally forms and hugs the body, making it easy to wear for everyday use.

Heavy-duty, nylon webbing.

Washable.



Cordura® is a registered trademark of INVISTA for durable fabrics.



Tool Pouches

PowerLine™ Series



5700



5701



5702



5703

Cat. No.	Pockets (Total Number)	Overall Size	Weight (lbs.)
5700	9	11" x 12" (279 mm x 305 mm)	.92
5701	8	11" x 12" (279 mm x 305 mm)	.83
5702	2	11" x 12" (279 mm x 305 mm)	.64
5703	3	11" x 12" (279 mm x 305 mm)	.75
5718	8	11" x 12" (279 mm x 305 mm)	.74
5719	19	11" x 12" (279 mm x 305 mm)	.87

Cordura® is a registered trademark of INVISTA for durable fabrics.



5718



5719

All dimensions are in inches and (millimeters).

Tool Pouches, Carriers, Belts & Suspenders



PowerLine™ Series

Closeable Pouch

PowerLine™
Series



5714

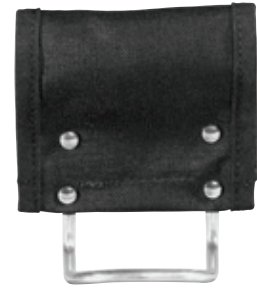
Additional Feature:

- Closeable pouch helps protect supplies and tools.

Cat. No.	Belt Connection	Belt Width	Overall Size	Weight (lbs.)
5714	tunnel	up to 2-1/4" (57 mm)	7-1/2" x 6-3/4" (190 mm x 171 mm)	.24

Hammer Holder

PowerLine™
Series



5706

Additional Feature:

- Heavy-metal hammer loop riveted for strength.

Cat. No.	Belt Connection	Belt Width	Overall Size	Weight (lbs.)
5706	tunnel	up to 2-1/4" (57 mm)	4-1/8" x 5" (105 mm x 127 mm)	.19

Tape Measure Holder

PowerLine™
Series



5707

Additional Features:

- Holds most tape measures with belt clips.
- Stainless steel clip holder accepts most tape clips up to 1-3/4" wide.

Cat. No.	Belt Connection	Belt Width	Overall Size	Weight (lbs.)
5707	tunnel	up to 2-1/4" (57 mm)	4-1/8" x 3-3/4" (104 mm x 95 mm)	.10

Multi-Purpose Holder

PowerLine™
Series



5708

Additional Feature:

- Holds a flashlight, cellular phone, or electrical tester.

Cat. No.	Belt Connection	Belt Width	Overall Size	Weight (lbs.)
5708	tunnel	up to 2-1/4" (57 mm)	3-1/4" x 8-1/2" (83 mm x 216 mm)	.13

Tape Measure Pouch

PowerLine™
Series



5712

Additional Features:

- Holds most 35-foot tape measures, fasteners, nails, or wire nuts.
- Two inside elastic loops fit screwdrivers, pencils, markers, etc.

Cat. No.	Belt Connection	Belt Width	Overall Size	Weight (lbs.)
5712	tunnel	up to 2-1/4" (57 mm)	8-1/4" x 4-1/2" (210 x 114 mm)	.24

Flashlight Holder

PowerLine™
Series



5713

Additional Features:

- Accommodates most "D" cell size battery flashlights up to 1-7/8" in diameter.
- Heavy-duty, 1-1/2" wide nylon webbing for extra strength.

Cat. No.	Belt Connection	Belt Width	Overall Size	Weight (lbs.)
5713	tunnel	up to 2-1/4" (57 mm)	4-1/4" x 2-3/8" (108 mm x 60 mm)	.06



Utility Knife Holder **PowerLine™ Series**

Additional Feature:

- Holds standard utility knife or other small tools.

Cat. No.	Belt Connection	Belt Width	Overall Size	Weight (lbs.)
5716	tunnel	up to 2-1/4" (57 mm)	7-3/4" x 2-1/2" (197 mm x 64 mm)	.15



5716

Mobile Phone Holders **PowerLine™ Series**

Additional Features:

- Fits most mobile phones.
- Metal belt clip for simple mounting and removal from belts up to 2" wide.
- Closable flap features genuine Velcro® brand touch fastener.
- Closed bottom for convenient storage.

Cat. No.	Size	Overall Dimensions		Pocket Dimensions			Weight (lbs.)
		H	W	H†	W	D	
5715XS	extra small	4-1/2" (114 mm)	2-5/8" (67 mm)	3" (76 mm)	2-1/8" (54 mm)	3/4" (19 mm)	.01
5715S	small	4-1/2" (114 mm)	2-5/8" (67 mm)	3-1/2" (89 mm)	2-1/8" (54 mm)	1" (25 mm)	.01
5715SMT	medium	5-1/2" (140 mm)	2-5/8" (67 mm)	4-1/4" (108 mm)	2-1/8" (54 mm)	1-1/4" (32 mm)	.011
5715	large	6-1/2" (165 mm)	3-5/8" (92 mm)	5" (127 mm)	3-5/8" (79 mm)	1-1/4" (32 mm)	.014

Velcro® is a registered trademark of Velcro Industries B.V.

†Velcro latching cover accommodates phones slightly taller than pocket.



5715SMT

Web Work Belt **PowerLine™ Series**

- Adjustable belt – fits waist sizes up to 54".
- Heavy-duty, 2" wide nylon webbing for extra strength.
- Accommodates tunnel loop and slotted tool pouches and holders.
- Rugged metal buckle for quick release and adjustment.

Cat. No.	Size	Width	Weight (lbs.)
5705	one size fits all	2" (51 mm)	.56



5705

Padded Tool Belts **PowerLine™ Series**

Additional Features:

- 5" cushioned pad for stability and comfort.
- Tapered front for comfort while bending.
- Heavy-duty 2" wide nylon web belt with rugged metal buckle.

Cat. No.	Size	Width	Weight (lbs.)
5704S	28" – 32" (711 mm – 813 mm)	2" (51 mm)	.90
5704M	32" – 36" (813 mm – 914 mm)	2" (51 mm)	.95
5704L	36" – 40" (914 mm – 1016 mm)	2" (51 mm)	1.00
5704XL	40" – 44" (1016 mm – 1118 mm)	2" (51 mm)	1.05
5704XXL	44" – 48" (1118 mm – 1219 mm)	2" (51 mm)	1.10



5704L

All dimensions are in inches and (millimeters).

⚠WARNING: This is NOT an occupational protective belt.

⚠WARNING: NOT for fall arrest or back support.



PowerLine™ Series

Padded Suspenders **PowerLine™ Series**

Additional Features:

- Fully adjustable length – front & back.
- Heavy-duty, 1-1/2" wide nylon web strap for extra strength and long wear.
- Convenient fastening system features genuine VELCRO® brand touch fasteners.
- Heavy-duty padding for user comfort.

Cat. No.	Size	Weight (lbs.)
5717	one size fits most	.84

Velcro® is a registered trademark of Velcro Industries B.V.



5717

4-Piece Combo Sets **PowerLine™ Series**

Set consists of the following pieces:

- 8-Pocket Tool Pouch (Cat. No. 5701).
- 3-Pocket Utility Pouch (Cat. No. 5703).
- Hammer Holder (Cat. No. 5706).
- Padded Tool Belt (Cat. No. 5704).



5709L

Cat. No.	Size	Width of Belt	Weight (lbs.)
5709M	32" – 36" (813 mm – 914 mm)	2" (51 mm)	2.71
5709L	36" – 40" (914 mm – 1016 mm)	2" (51 mm)	2.77
5709XL	40" – 44" (1016 mm – 1118 mm)	2" (51 mm)	2.80
5709XXL	44" – 48" (1118 mm – 1219 mm)	2" (51 mm)	2.60

4-Piece Electrician's Combo Sets **PowerLine™ Series**

Set consists of the following pieces:

- 8-Pocket Tool Pouch (Cat. No. 5718).
- 19-Pocket Tool Pouch (Cat. No. 5719).
- Hammer Holder (Cat. No. 5706).
- Padded Tool Belt (Cat. No. 5704).



5710M

Cat. No.	Size	Width of Belt	Weight (lbs.)
5710M	32" – 36" (813 mm – 914 mm)	2" (51 mm)	2.75
5710L	36" – 40" (914 mm – 1016 mm)	2" (51 mm)	2.80
5710XL	40" – 44" (1016 mm – 1118 mm)	2" (51 mm)	3.05

All dimensions are in inches and (millimeters).

⚠WARNING: This is NOT an occupational protective belt.

⚠WARNING: NOT for fall arrest or back support.



Lightweight Tool Belt

- *Leather construction.*
- *Designed to carry lightweight tool pouches.*

Cat. No.	Size	Width	Weight (lbs.)
5201	33" – 45" (838 mm – 1143 mm)	1" (25 mm)	.30



5201

General-Purpose Belts

- *Strong, heavy-duty leather.*
- *Removable single-tongue buckle held by two heavy-duty snaps.*

Cat. No.	Size	Width	Weight (lbs.)
5202M	32" – 40" (813 mm – 1016 mm)	1-1/2" (38 mm)	.40
5202L	38" – 46" (965 mm – 1168 mm)	1-1/2" (38 mm)	.45
5202XL	46" – 54" (1168 mm – 1372 mm)	1-1/2" (38 mm)	.50



5202L

Lightweight Utility Belt

- *Strong, lightweight polypropylene web.*
- *Quickly adjusts for waist sizes through 52" (1321 mm).*
- *Accepts tunnel-loop and slotted pouches and holders.*
- *Tough, molded, non-metallic, slide-action buckle provides single-handed, quick release and adjustment.*

Cat. No.	Color	Size	Width	Weight (lbs.)
5204	blue	one size fits all	2" (51 mm)	.20



5204

Adjustable Web Tool Belt

- *Fits waist sizes up to 48".*
- *Accommodates tunnel loop and slotted tool pouches and holders.*
- *2" wide polypropylene webbing.*
- *Rugged metal buckle for quick release and easy adjustment.*
- *Corrosion resistant hardware.*

Cat. No.	Size	Width	Weight (lbs.)
5225	48" (1219 mm)	2" (51 mm)	.60



5225

Heavy-Duty Embossed Tool Belts

- *Strong, heavy-duty rigging-leather.*
- *Equipped with a double-tongue buckle.*

Cat. No.	Size	Width	Weight (lbs.)
5415S	32" – 40" (813 mm – 1016 mm)	2" (51 mm)	.63
5415	36" – 44" (914 mm – 1118 mm)	2" (51 mm)	.64
5415L	40" – 48" (1016 mm – 1219 mm)	2" (51 mm)	.64
5415XL	44" – 52" (1118 mm – 1321 mm)	2" (51 mm)	.65



5415

All dimensions are in inches and (millimeters).

▲WARNING: This is NOT an occupational protective belt.

▲WARNING: NOT for fall arrest or back support.



Tool Belts

Cotton/Polyester Blend Tool Belt w/Quick-Release Buckle

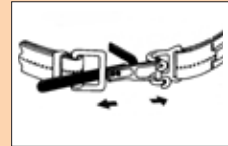
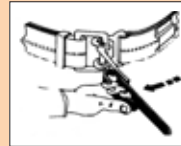
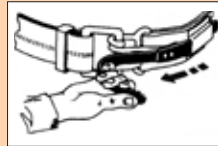
- NOT an occupational protective belt. ONLY use as a tool belt.
- Features a forged, quick-release buckle for emergency situations where the user has to quickly disengage the belt (for example, when working over water or in grain elevators).
- Must be worn over the user's harness and clothing so it will drop free when released.
- Belt is made of a mildew-resistant blend of cotton/polyester webbing for comfort and strength.



5425M

Designed for Quick Release

1. Pull free end of release strap to disengage other end from retainer.
2. Pulling action rotates clasp to open position.
3. Disengaged clasp allows belt to separate.



Cat. No.	Size	Weight (lbs.)
5425M	30" - 44" (762 mm - 1118 mm)	1.53
5425XL	38" - 58" (965 mm - 1473 mm)	1.67

Electrician's Tool Belts

Electrician's Web Tool Belts

- Lightweight web belt.
- Includes leather tool loops and chain tape thong.
- Friction buckle.



5227L

Cat. No.	Size	Width	Weight (lbs.)
5227M	32" - 40" (813 mm - 1016 mm)	1-1/2" (38 mm)	.39
5227L	40" - 48" (1016 mm - 1219 mm)	1-1/2" (38 mm)	.40
5227XL	48" - 56" (1219 mm - 1422 mm)	1-1/2" (38 mm)	.42

Ironworker's Heavy-Duty Tie-Wire Belts

Ironworker's Heavy-Duty Tie-Wire Belts

- Leather construction.
- Rugged 2" (51 mm) wide belt.
- Has separate reel-strap with its own buckle that lets you quickly and conveniently put on or take off a Klein tie-wire reel and optional pad without removing the belt or your tool pouch.
- Strong double-tongue buckle with keeper.
- Embossed basket-weave pattern.



5420L

Cat. No.	Waist Size	Belt Size Range	Width	Weight (lbs.)
5420S	36" (914 mm)	32" - 40" (813 mm - 1016 mm)	2" (51 mm)	.85
5420	40" (1016 mm)	36" - 44" (914 mm - 1118 mm)	2" (51 mm)	.95
5420L	44" (1118 mm)	40" - 48" (1016 mm - 1219 mm)	2" (51 mm)	1.05
5420XL	48" (1219 mm)	44" - 52" (1118 mm - 1321 mm)	2" (51 mm)	1.15

Tie-wire reel available on page 204. Tie-wire pad available on page 154.

All dimensions are in inches and (millimeters).

▲WARNING: This is NOT an occupational protective belt.

▲WARNING: NOT for fall arrest or back support.



10 Pocket Tool Pouch and Belt Set

- Combines the popular Cat. No. 5165, leather 10 pocket pouch, and Cat. No. 5202, general purpose leather belt, into one item.
- Belt is embossed to guide cutting and reduce size from large to medium.
- Belt fits 32" to 46" waist sizes (813 mm - 1,168 mm) and is 1-1/2" (38 mm) wide.
- Four large capacity utility pockets, two pliers pockets, four screwdriver loops and knife snap.
- Pouch is riveted and stitched to assure long life.
- Top grain leather construction.



55210

Cat. No.	Belt Width	Overall Size	Pockets	Size	Specialty Add-Ons	Weight (lbs.)
55210	1-1/2" (38 mm)	10" x 10" (254 mm x 254 mm)	10	32" - 46" (813 mm - 1168 mm)	knife snap	1.2

Suspenders

Suspenders

- Clips and slides are nickel-plated for corrosion resistance.
- Extra-strong belt clips have alligator teeth for added gripping power.
- One size fits all.



60223B

Cat. No.	Color	Strap Width	Leather-Back Strap Spreader	Weight (lbs.)
Nylon-Web Suspenders				
60210B	blue	2" (51 mm)	adjustable	.63
Elastic-Back Suspenders				
60223B	blue	2" (51 mm)	non-adjustable	.60

Suspender Accessories

Leather Cushion Belt Pads

- Deluxe leather pad is 4" (102 mm) wide.
- Thick leather back with four snap-open straps for easy attachment to any belt up to 2" (51 mm) wide.
- Sponge-padded leather liner has rounded edges, and is permanently stitched to the back.
- The most durable, most comfortable pad to wear, especially for prolonged work periods.
- When sizing a belt to accommodate this pad, add 2" to 4" to the belt waist size.



87904

Cat. No.	Length	Width	Weight (lbs.)
87904	22" (559 mm)	4" (102 mm)	.99
87906	30" (762 mm)	4" (102 mm)	1.04

All dimensions are in inches and (millimeters).

▲WARNING: This is NOT an occupational protective belt.

▲WARNING: NOT for fall arrest or back support.



PRIDE

Pride in one's work is what separates the true professionals from the rest. Just as you're proud of the job you do, we're proud to be able to help you do it better...with a professional line of hand tools. You can rely on Klein.

Andy

Andy Bucher
Building Maintenance Supervisor
14 Years

KLEIN TOOLS
For Professionals... Since 1857®

Lincolnshire, IL U.S.A.
www.kleintools.com

Professionals Are Known By The Tools They Own™ © 2007 Klein Tools

