

Cushion-Grip Screwdriver Sets

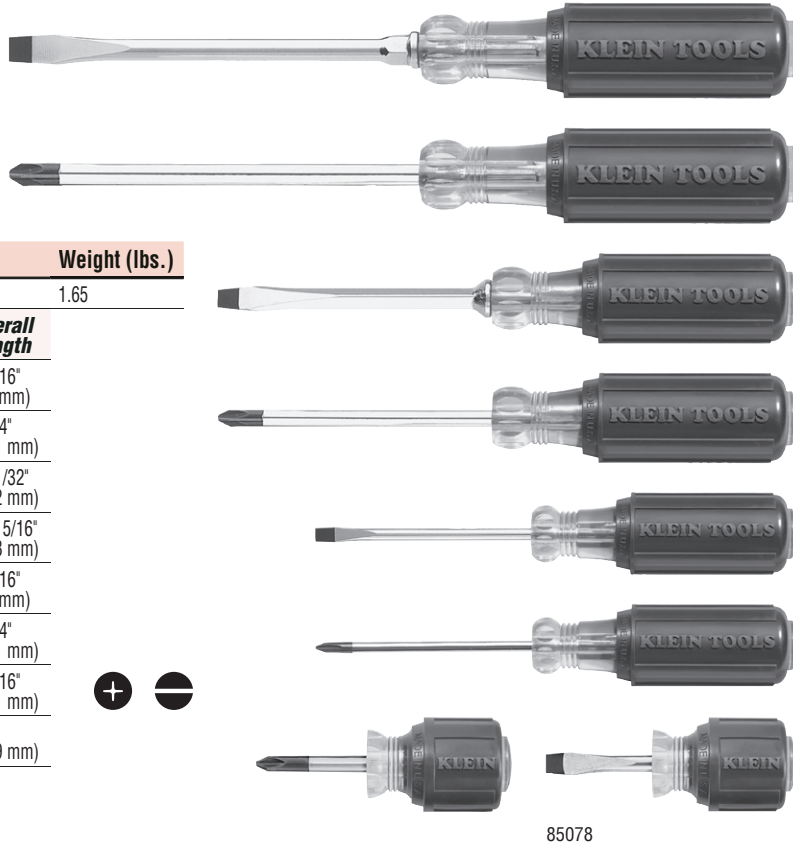
8-Piece Cushion-Grip Screwdriver Set

- General-purpose selection of the most frequently used screwdrivers.
- Includes: one cabinet-tip, three keystone-tip, and four Phillips-tip styles.

Cat. No.	Set Contains	Weight (lbs.)
85078		1.65

Cat. No.	Description	Shank Length	Overall Length
600-1	round-shank, keystone-tip*	1-1/2" (38 mm)	3-7/16" (87 mm)
601-3	round-shank, cabinet-tip	3" (76 mm)	6-3/4" (171 mm)
600-4	square-shank, keystone-tip*	4" (102 mm)	8-11/32" (212 mm)
602-6	round-shank, keystone-tip*	6" (152 mm)	10-15/16" (278 mm)
603-1	round-shank, No. 2 Phillips-tip	1-1/2" (38 mm)	3-7/16" (87 mm)
603-3	round-shank, No. 1 Phillips-tip	3" (76 mm)	6-3/4" (171 mm)
603-4	round-shank, No. 2 Phillips-tip	4" (102 mm)	8-5/16" (211 mm)
603-6	round-shank, No. 3 Phillips-tip	6" (152 mm)	11" (279 mm)

* Heavy-duty models



85078

6-Piece Cushion-Grip Screwdriver Set

- General-purpose selection of the most frequently used screwdrivers.
- Includes: one cabinet-tip, two keystone-tip, and three Phillips-tip styles.

Cat. No.	Set Contains	Weight (lbs.)
85074		1.50

Cat. No.	Description	Blade Length	Overall Length
601-3	round-shank, cabinet-tip	3" (76 mm)	6-3/4" (171 mm)
600-4	square-shank, keystone-tip*	4" (102 mm)	8-11/32" (212 mm)
600-6	square-shank, keystone-tip*	6" (152 mm)	10-15/16" (278 mm)
603-3	round-shank, No. 1 Phillips-tip	3" (76 mm)	6-3/4" (171 mm)
603-4	round-shank, No. 2 Phillips-tip	4" (102 mm)	8-5/16" (211 mm)
603-6	round-shank, No. 3 Phillips-tip	6" (152 mm)	11" (279 mm)

* Heavy-duty models



85074

All dimensions are in inches and (millimeters).

▲WARNING: Always wear approved eye protection.

▲WARNING: NOT insulated. Will NOT protect against electrical shock.

▲WARNING: Do NOT use to pry or chisel.

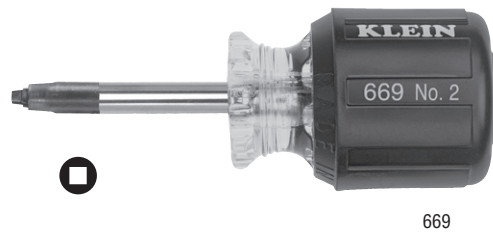
What's New @ KLEIN TOOLS



Cushion-Grip Screwdrivers

Stubby Square-Recess Tip Cushion-Grip Screwdrivers

- Integral flanges inside handle provide solid, twist-resistant blade anchor.
- Stubby Screwdrivers allow for work in close quarters.
- Meets or exceeds applicable ASME / ANSI specifications.
- Cushion-Grip handles for greater torque and comfort.
- Works on most combination head receptacle and switch screws.
- Premium chrome plated for smooth feel and corrosion resistance.
- Special heat-treated shafts.
- Color-coded handle ends for quick and easy identification.



669

Cat. No.	Description	Color Code	Shank Length	Overall Length	Weight (lbs.)
668	round-shank, No. 1 square-recess tip	green	1-1/2" (38 mm)	3-1/16" (87 mm)	.15
669	round-shank, No. 2 square-recess tip	red	1-1/2" (38 mm)	3-1/16" (87 mm)	.15

Cushion-Grip Screwdriver Sets

2-Piece Stubby Square-Recess Tip Cushion-Grip Screwdriver Set

- Integral flanges inside handle provide solid, twist-resistant blade anchor.
- Stubby Screwdrivers allow for work in close quarters.
- Meets or exceeds applicable ASME / ANSI specifications.
- Works on most combination head receptacle and switch screws.
- Premium chrome plated for smooth feel and corrosion resistance.
- Special heat-treated shafts.
- Color-coded handle ends for quick and easy identification.



85155

Cat. No.	Set Contains	Weight (lbs.)															
85155	<table border="1"> <thead> <tr> <th>Cat. No.</th> <th>Description</th> <th>Color Code</th> <th>Shank Length</th> <th>Overall Length</th> </tr> </thead> <tbody> <tr> <td>668</td> <td>round-shank, No. 1 square-recess tip</td> <td>green</td> <td>1-1/2" (38 mm)</td> <td>3-7/16" (87 mm)</td> </tr> <tr> <td>669</td> <td>round-shank, No. 2 square-recess tip</td> <td>red</td> <td>1-1/2" (38 mm)</td> <td>3-7/16" (87 mm)</td> </tr> </tbody> </table>	Cat. No.	Description	Color Code	Shank Length	Overall Length	668	round-shank, No. 1 square-recess tip	green	1-1/2" (38 mm)	3-7/16" (87 mm)	669	round-shank, No. 2 square-recess tip	red	1-1/2" (38 mm)	3-7/16" (87 mm)	.30
Cat. No.	Description	Color Code	Shank Length	Overall Length													
668	round-shank, No. 1 square-recess tip	green	1-1/2" (38 mm)	3-7/16" (87 mm)													
669	round-shank, No. 2 square-recess tip	red	1-1/2" (38 mm)	3-7/16" (87 mm)													

All dimensions are in inches and (millimeters).

▲WARNING: Always wear approved eye protection.

▲WARNING: NOT insulated. Will NOT protect against electrical shock.

▲WARNING: Do NOT use to pry or chisel.

KLEIN TOOLS

For Professionals... Since 1857®

Chicago, IL 60659-9033

www.kleintools.com

Supplement to Catalog 147

August 2005

© 2005 Klein Tools, Inc.

Printed in U.S.A.

MKT061505

