

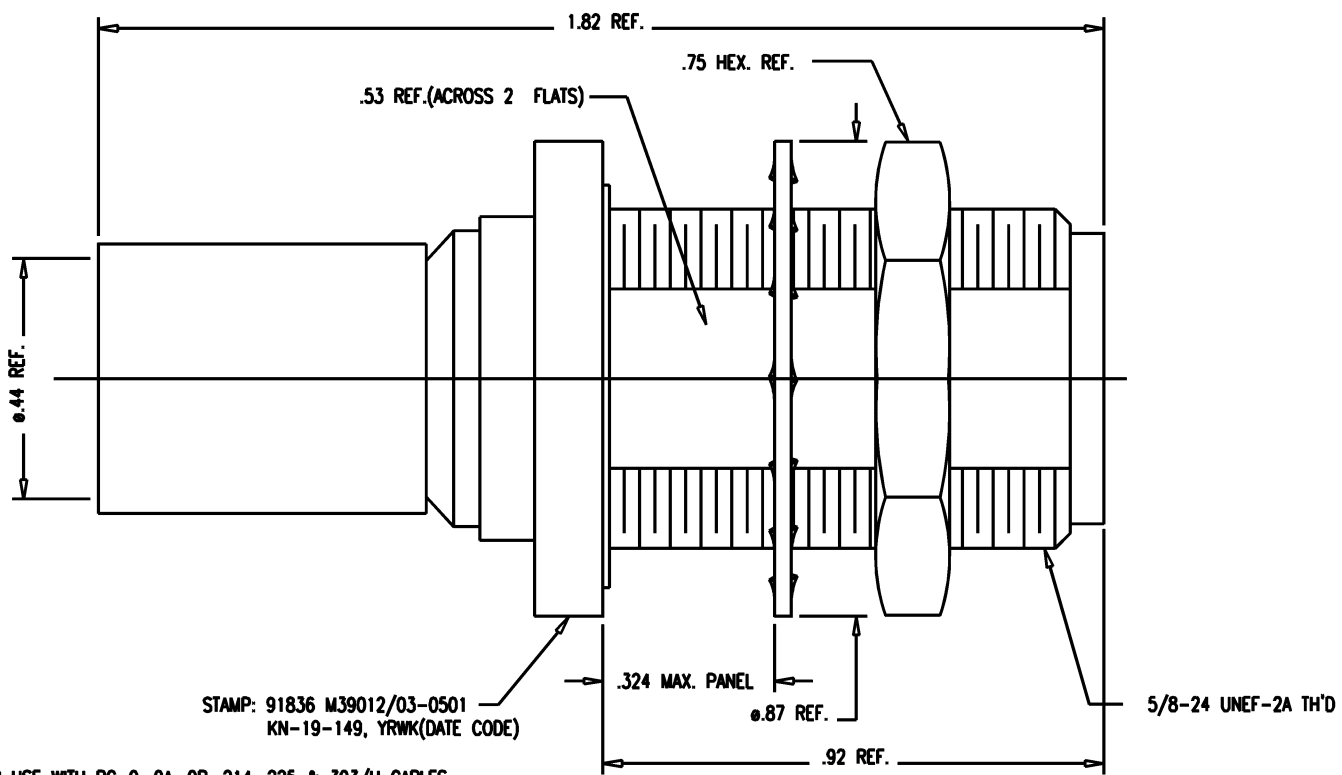
DASH NO.	M CODE	MADE FROM
----------	--------	-----------

SD

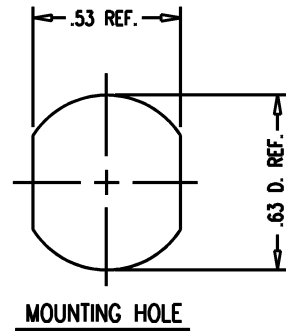
M39012/03-0501

REVISIONS

ISSUE	CHANGES
6	CN 33220 C WJM 08/20/91
7	CN 37427 E JW 03/19/98
8	CN 38046 E DCT 7/10/00
9	CN 38496 E BDH 02/05/02



- NOTES:
- FOR USE WITH RG-9, 9A, 9B, 214, 225 & 393/U CABLES.
  - FOR CABLE TRIMMING SEE KTU-137 & KTD-138.
  - FOR FORMING USE CRIMP DIE KTH-2004.
  - FOR CABLING INSTRUCTIONS SEE CP-480.
  - MATERIALS:  
INSULATOR: TEFLON, ASTM-D-4894  
LOCKWASHER: PHOS. BRONZE, ASTM-B-103  
CENTER CONTAC: BER. COP., ASTM-B-196  
K-GRIP SLEEVE: COM. BRONZE, ASTM-B-140  
GASKET: SILICONE RUBBER, ZZ-R-765  
ALL OTHER METAL PARTS: BRASS, ASTM-B16
  - FINISHES:  
CENTER CONTACT-GOLD PLATE PER MIL-G-45204  
ALL OTHER METAL PARTS-SILVER PLATE PER QQ-S-365
  - ELECTRICAL CHARACTERISTICS:  
NOMINAL IMPEDANCE-50 OHMS  
FREQUENCY RANGE-DC TO 11 GHZ  
WORKING VOLTAGE-1000 VRMS



MOUNTING HOLE

KN191497

SCALE	4:1		
APPROX SURFACE AREA	KN-19-149		
USED ON			
REF:	JACK, BULKHEAD, N		
DRAWN	GINO	DATE	04/30/74
DESIGN	LI	DATE	08/02/74
APPR.		DATE	

**KINGS**  
ELECTRONICS CO., INC.  
ROCK HILL, SOUTH CAROLINA 29730

SD

M39012/03-0501