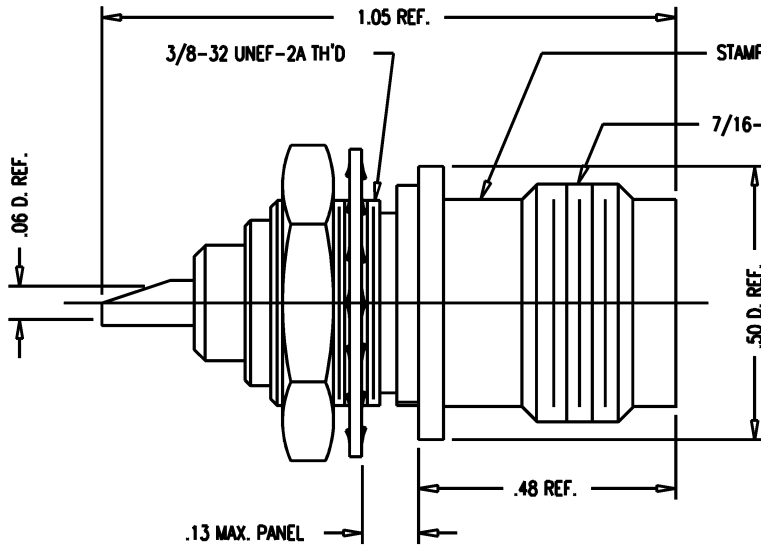


GSD

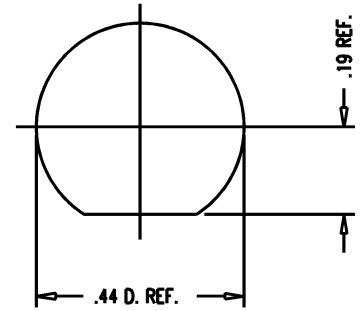
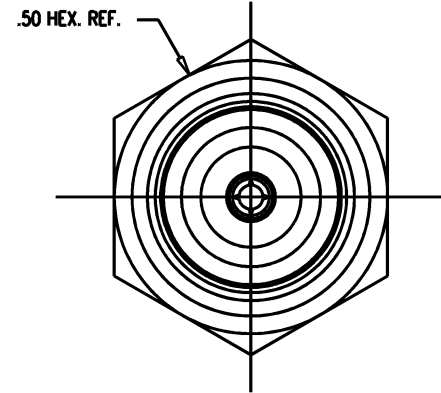
M39012/31-0001

REVISIONS

ISSUE	CHANGES
13	CN 36587 C REDRAWN ME 09/25/95



STAMP: 91836 M39012/31-0001
KA-71-02 XXXX (DATE CODE)



MOUNTING HOLE

NOTES:

1. INTERFACE PER MIL-STD-348, FIG. 313-2.
2. MATERIALS:
INSULATOR: TEFLON, ASTM-D-4894
LOCKWASHER: PHOSPHOR BRONZE, ASTM-B-103
CENTER CONTACT: BER. COPPER, ASTM-B-196
ALL OTHER METAL PARTS: BRASS, ASTM-B16
3. FINISHES:
CENTER CONTACT: GOLD PLATE PER MIL-G-45204
ALL OTHER METAL PARTS: SILVER PLATE, PER QQ-S-365
4. ELECTRICAL CHARACTERISTICS:
NOMINAL IMPEDANCE: 50 Ω
FREQUENCY RANGE: DC TO 11 GHz
WORKING VOLTAGE: 500 VOLTS RMS

KA-71-02 QGS0871

SCALE 4:1

APPROX SURFACE AREA

USED ON

REF:

RECEPTACLE,
TNC, BULKHEAD

DRAWN ME 09/25/95

DESIGN MJB 09/25/95

APPR. DATE

KINGS
ELECTRONICS CO., INC.
TUCKAHOE, NEW YORK 10707

M39012/31-0001

GSD