

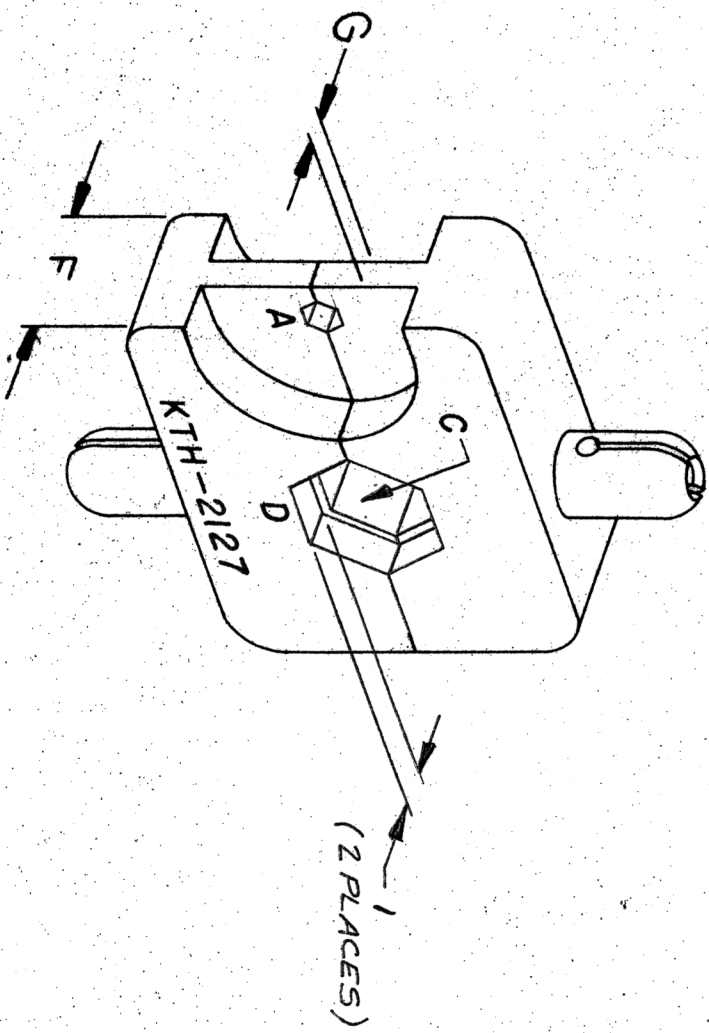
DASH NO. M CODE

MADE FROM

S-D

KTH-2127

REVISIONS	
ISSUE	CHANGES
0	ER 21419 GA 13 DEC 80
1	CN 27545 C SD 6 NOV 85



NOTES:

1. FOR USE WITH RAYCHEM 5012H3012 CABLE.

HEX SIZES (ACROSS FLATS)		DIE WIDTH		DIE WIDTH				
A	B	C	D	F	G	H	I	
.100	—	.334	.365	—	.620	.093	—	.110

- UNLESS OTHERWISE SPECIFIED:
1. TOLERANCES: FRACTIONS & 2 PLACE DECIMALS ± .010
 2. REMOVE ALL BURRS, BREAK SHARP EDGES .005 MAX.
 3. NO FILLETS PERMITTED.
 4. SURFACE ROUGHNESS 63 MICROINCHES RMS MAX.
 5. ALL DIMENSIONS PRIOR TO PLATING.
 6. ALL PLATING IN ACCORDANCE WITH KER 10004.
 - 3 PLACE DECIMALS ± .004
 7. ANGLES ± 0°30'
 - T. I. R. CONCENTRICITY OF ANY 2 DIAMETERS MAY NOT EXCEED HALF THE SUM OF THEIR TOLERANCES.

S-D

SCALE: 2:1

USED ON:

REF: BOEING

CRIMP DIE

DRAWN: MJB DATE: 28 APR 81
 APPR: [Signature] DATE: 28 APR 81

BEKING'S
 ELECTRONICS CO., INC.
 TUCKAHOE, NEW YORK 10781

KTH-2127