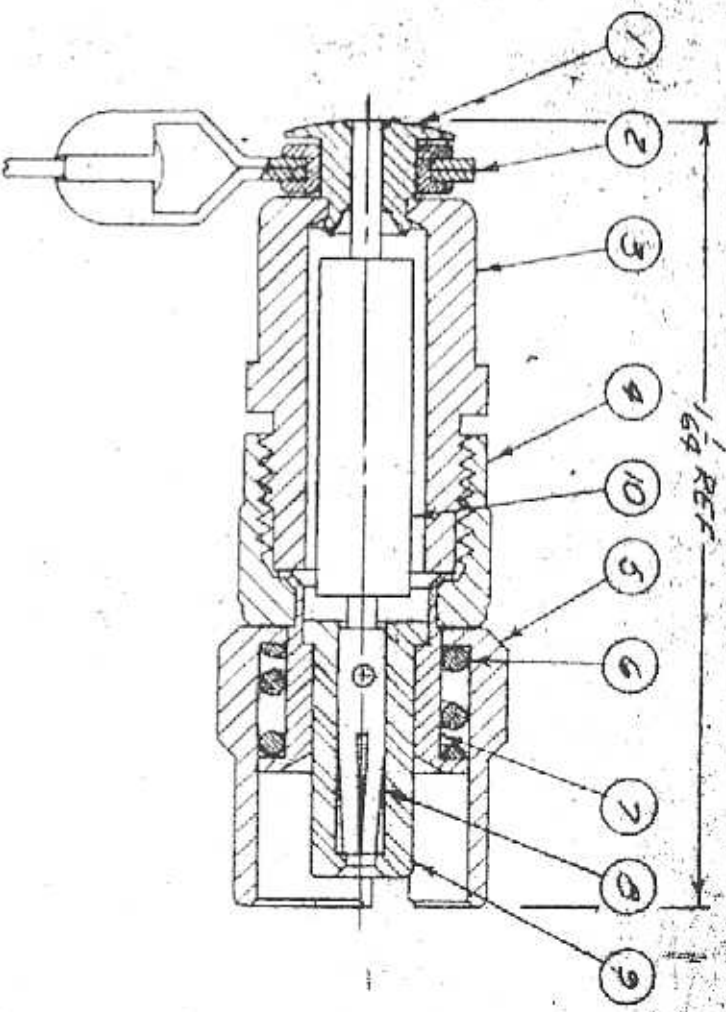
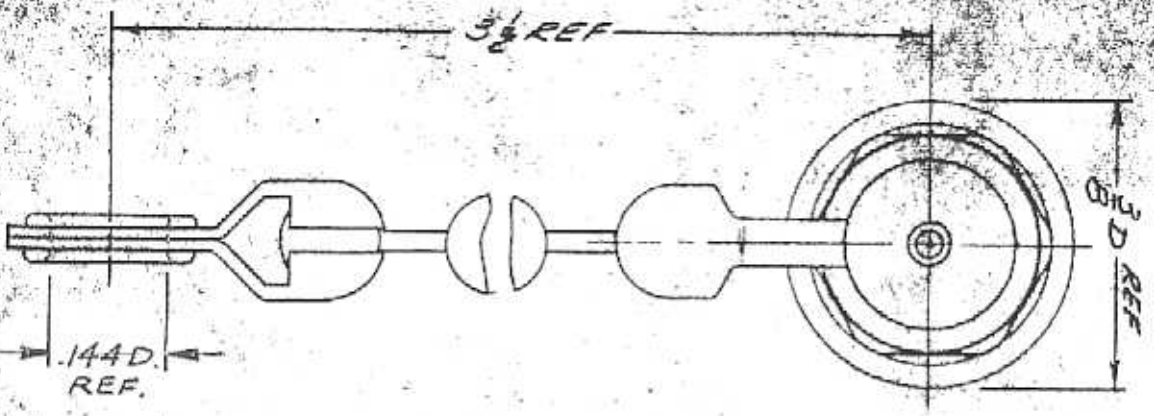


UNLESS OTHERWISE SPECIFIED LIMITS ON DIMENSIONS ARE:  
 FRACTIONS ± 0.10 DECIMALS ± 0.004 ANGLES ± 1°



10	1	RESISTOR 512	
9	1	INSULATOR	
8	1	CONTACT	
7	1	SLEEVE	
6	1	SPRINGS	
5	1	BYONNET SLEEVE	
4	1	SHIELD	
3	1	CAP	
2	1	BEAD CHAIN ASSY	
1	1	STUD	
1/2 IN BEAD		DESCRIPTION	DWG. NO.

ALL DIMENSIONS  
 REFER TO PLATING

REMOVE ALL BURRS. MAINTAIN  
 SHARP CORNERS. UNLESS CALLED  
 OUT ON FILLET'S ARE SPECIFIED.

UNLESS OTHERWISE SPECIFIED,  
 MAXIMUM ACCEPTABLE SURFACE ROUGHNESS IS  
 32 MICROINCHES RMS IN ACCORDANCE WITH NAS-30

REV.	REVISIONS	CHANGES
1	CN 8153A	LR. 3/24/50
2	CN 11090C	JGL. 19 APR 52

RESISTOR  
 CAP 512

DRAWN PTB DATE 8-29-55

APPR. \_\_\_\_\_ DATE \_\_\_\_\_

KINGS ELECTRONICS  
 40 MARLBOROUGH ROAD  
 TUCKAHOE, N. Y.  
 KM-81-02