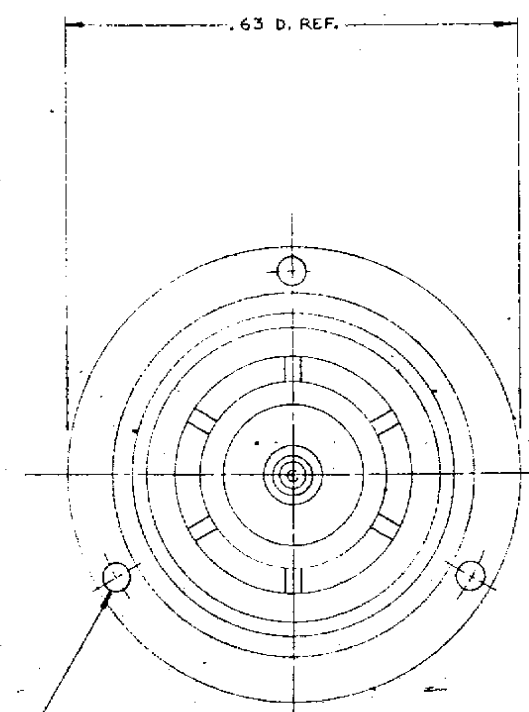
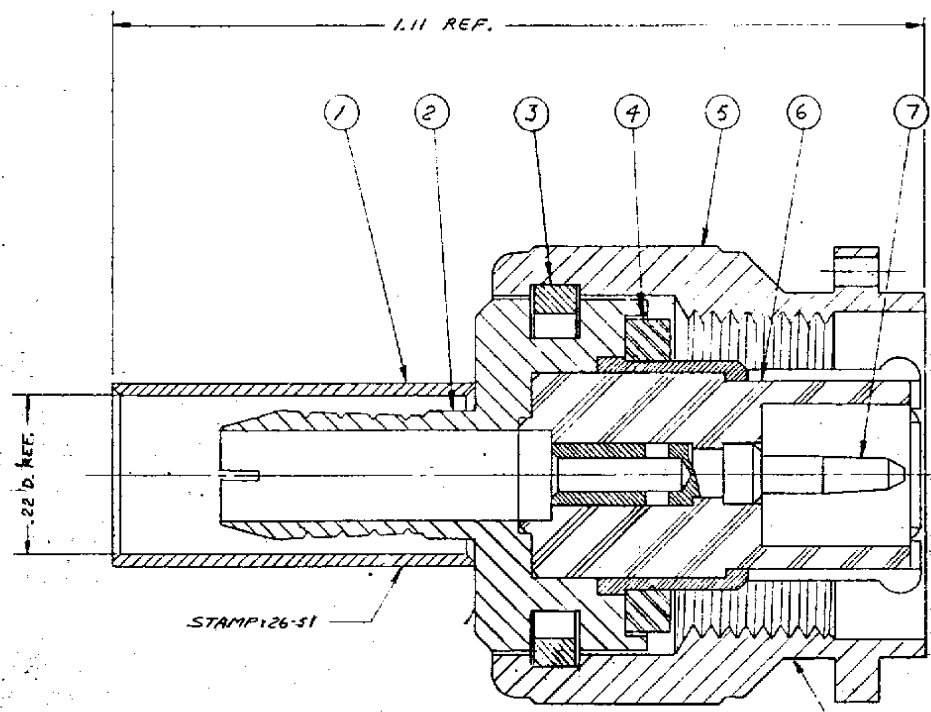


DASH NO.	DESCRIPTION	MADE FROM
----------	-------------	-----------



NOTES:

1. FOR USE WITH RG-142, 223 & 400/U CABLE GROUPS.
2. FOR CABLE TRIMMING USE KTT-113 & KTD-166.
3. FOR FORMING USE CRIMP DIE SIZE 01.
4. FOR CABLING INSTRUCTIONS SEE CP-965.

UNLESS OTHERWISE SPECIFIED:

- | | |
|--|--|
| 1. TOLERANCES: FRACTIONS & 2 PLACE DECIMALS ± .010 | 2. REMOVE ALL BURRS, BREAK SHARP EDGES .005 MAX. |
| 3 PLACE DECIMALS ± .004 | ANGLES ± 0° 30' |
| T. I. R. CONCENTRICITY OF ANY 2 DIAMETERS MAY NOT EXCEED HALF THE SUM OF THEIR TOLERANCES. | 3. NO FILLETS PERMITTED. |
| | 4. SURFACE ROUGHNESS 63 MICROINCHES RMS MAX. |
| | 5. ALL DIMENSIONS PRIOR TO PLATING. |

M39012/26-0503

REVISIONS	
ISSUE	CHANGES
0.	ER 13606 LI 18 JUL 74
1	CN 13841 A M. J. B 11 OCT 74
2	CN 14475 C GA 13 MAY 75
3	CN 15977 A GA 15 JUL 76
4	CN 21657 C HELEN 23 FEB 81
7	CN 32301 A LNM 19 JUN 90

KA-59-292

USED ON:
REP:
FINISH:
SPEC. KER 10004
MATL:
SPEC:

ZNC PLUG

DRAWN W. D.	DATE 2 MAY 74
APPR. LI	DATE 18 JUL 74

KINGS ELECTRONICS
40 MARBLEDALE ROAD
TUCKAHOE, N. Y. 10707

M39012/26-0503

ITEM	REQ'D	DESCRIPTION	PART NO.
8	1	CABLING INSTRUCTIONS	9-102-2M88
7	1	BNC CRIMP CAPTIVE CONTACT M	1-563-19M9D
6	1	INSULATOR	
5	1	COUPLING NUT	
4	1	GASKET	
3	1	C-RING	
2	1	K-GRIP BODY ASS'Y.	
1	1	K-GRIP SLEEVE	5-89-05-2-MC7

SD