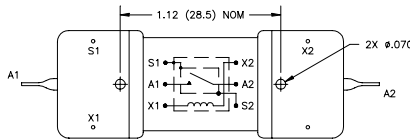
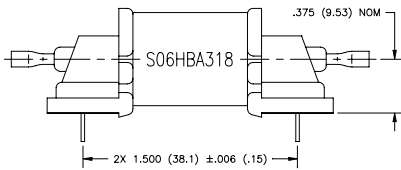
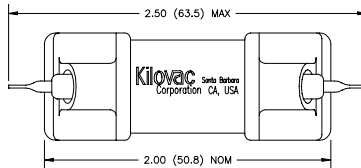
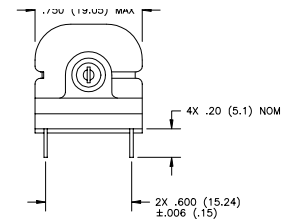


Kilovac S06HBA318 No Load Switching



1. Dimensions in parentheses are in millimeters.
2. Pin dimension are .024 (.61) nom. square.
3. Recommended P.C.B. holes: .043 (1.0)



Features:

- 8 amp continuous carry @ 7 Kvdc
- Vacuum dielectric for power switching low current loads
- 100 million cycle mechanical life
- Carries 10A at DC; 6 amps at 30 MHz

PRODUCT SPECIFICATIONS

Part Number	Units	S06HBA318
Contact Arrangement		SPST-NO
Contact Form		A
Voltage Ratings	kV Peak	
Between Contacts		7
Contacts to Coil		7
Contacts to Screen		7
Coil to Screen5
Carry Current , Maximum	Amps	
@ DC		10
@ 30 MHz		6
Contact Resistance	mohm	50
Contact Capacitance	pF	
Between Open Contacts		0.4
Closed Contacts to Ground		5
Operate Time [4]	ms	2
Release Time [4]	ms	1
Shock, 11 ms 1/2 Sine (Peak)	G's	100
Vibration	G's Peak	20
.....	Hz	10 to 500
Temperature Range	°C	
Operating		-40 to +85
Storage		-55 to +125
Initial Insulation Resistance	GigaOhms	10
Mechanical Life	Cycles	100 Million
Weight, Nominal	oz.	0.85

4. Operate and release times are with external diode suppressions. @ 25°C.

COIL DATA

	S06HBA318	Unit
Volts, Nominal	24	Vdc
Maximum Voltage	31	
Pickup, Maximum	15	
Dropout, Maximum	2	
Coil Resistance	1,000	Ohms
RF Screen, Inner	S1	Pin #
RF Screen, Outer	S2	
EM Shield	N/A	