

PLASTIC LITHIUM CELL HOLDERS

"1/2AA" · "CR2" · "2/3A"

FEATURES

- Snap-In PC contact holds in position for wave soldering
- Tin Nickel Plated contacts for excellent solderability and durability
- Polarity clearly marked for orientation
- Low Profile, space-saving
- Snap-on retainer cover (optional) retains battery securely to withstand shock and vibration. Helps protect against shorting. Tamper-proof.

APPLICATIONS

- Computer memory, power transfer and back-up systems
- Video and telecommunications power back-up requirements
- Preprogrammed video and electronic games
- Microprocessor, microcomputers, minicomputers, notebook, laptop and handheld computer memory hold applications
- Emergency power systems
- Residential, industrial and commercial security and fire alarm systems



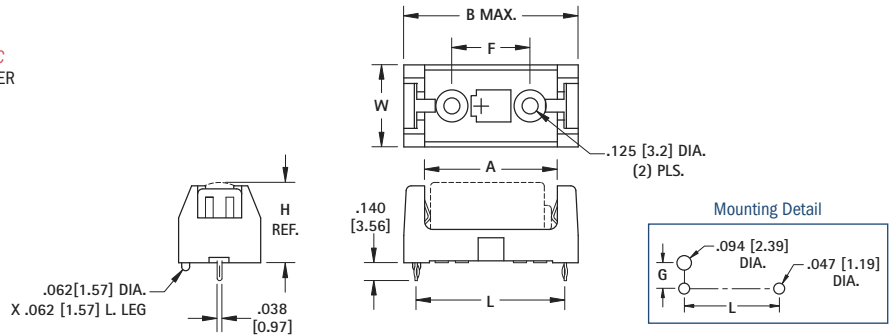
SPECIFICATIONS

Base: PBT, UL Rated 94V-0

Retainer Cover: PBT, UL Rated 94V-0

Contacts: .012 (.30) Stainless Steel, Tin Nickel Plate

Operating Temp Range: -60°F to +290°F (-50°C to +145°C)



CAT. NO.	COVER	L	W	H (Ref)	A	B (MAX)	F	G	CELL SIZE	BATTERY CROSS REFERENCE
108	108C	1.160 (29.5)	.640 (16.3)	.633 (16.1)	1.030 (26.2)	1.360 (34.5)	.610 (15.5)	.279 (7.1)	"1/2 AA" "CR2"	Energizer: 544, CR2, Duracell: PX28L, CR2, Kodak: K28A & KS28, CR2, Panasonic: CR14250, CR2, Sanyo: CR14250SE, CR2, Saft: LCP3, Maxell: 4LR44, CR2
1029	1029C 1029LC	1.500 (38.1)	.720 (18.3)	.712 (18.1)	1.375 (34.9)	1.700 (43.2)	.950 (24.1)	.320 (8.1)	"2/3 A"	Duracell: DL2/3A, Kodak: K123L, Sanyo: CR173335SE, Saft: 450SC & VR0450

RUGGED STEEL & ALUMINUM LITHIUM CELL HOLDERS

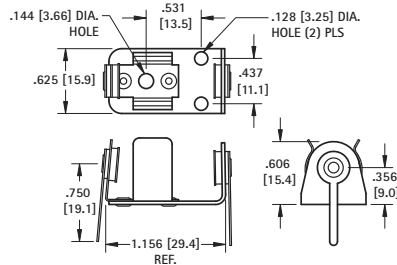
- Sturdily constructed of quality materials
- Contacts made from Brass, Nickel Plate
- Ideal for punishing applications

STEEL HOLDERS "1/2AA"



CAT. NO. 2103

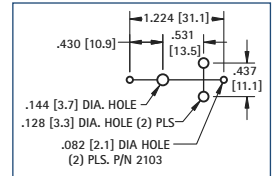
CAT. NO. 1103



BATTERY CROSS REFERENCE

Energizer: 544, Duracell: PX28L, Kodak: K28A & KS28, Panasonic: CR14250, Sanyo: CR14250SE, Saft: LCP3, Maxell: 4LR44

Mounting Detail

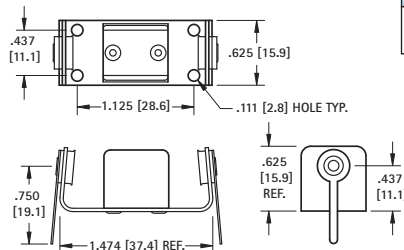


ALUMINUM HOLDERS "2/3A"



CAT. NO. 131

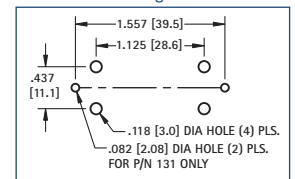
CAT. NO. 132



BATTERY CROSS REFERENCE

Duracell: DL2/3A, Kodak: K123L, Sanyo: CR173335SE, Saft: 450SC & VR0450

Mounting Detail



6 VOLT LITHIUM CELL HOLDERS

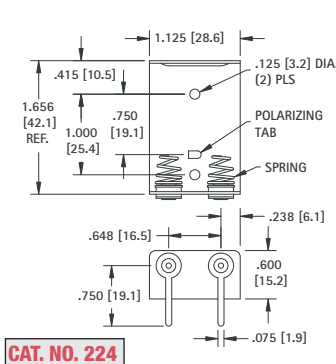


- Polarizing Tab for proper orientation
- Lightweight, ideal for rugged applications
- DL223A or Equivalent Batteries

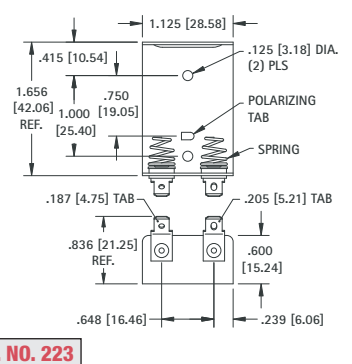
SPECIFICATIONS

Frame: Aluminum 2024-T3 **Terminals:** Brass, Tin Plate

Spring Contacts: .025 (.64) Dia. Spring Steel, Nickel Plate



CAT. NO. 224



CAT. NO. 223

LITHIUM BATTERY HOLDERS