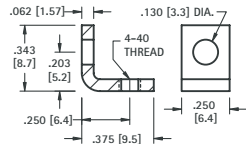


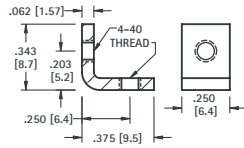
### 4-40 THREAD



**MATERIAL:**  
.062 (1.57) thick Steel,  
Zinc Plate

**CAT. NO. 612**

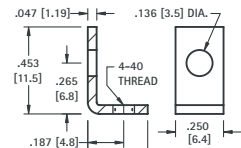
### 4-40 THREAD



**MATERIAL:**  
.062 (1.57) thick Steel,  
Zinc Plate

**CAT. NO. 621**

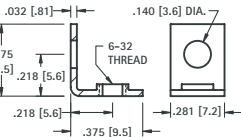
### 4-40 THREAD



**MATERIAL:**  
.047 (1.19) thick Brass,  
Tin Plate

**CAT. NO. 616**

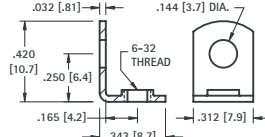
### 6-32 THREAD



**MATERIAL:**  
.032 (.81) thick Brass,  
Nickel Plate

**CAT. NO. 634**

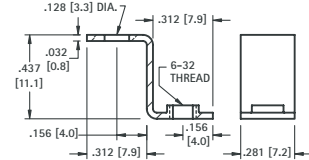
### 6-32 THREAD



**MATERIAL:**  
.032 (.81) thick Brass,  
Tin Plate

**CAT. NO. 614**

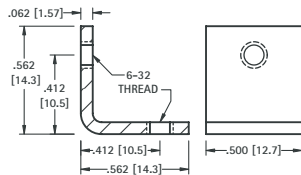
### 6-32 THREAD



**MATERIAL:**  
.032 (.81) thick Brass,  
Tin Plate

**CAT. NO. 630**

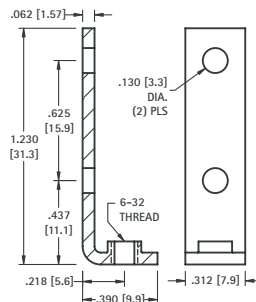
### 6-32 THREAD



**MATERIAL:**  
.062 (1.57) thick Steel,  
Nickel Plate

**CAT. NO. 4334**

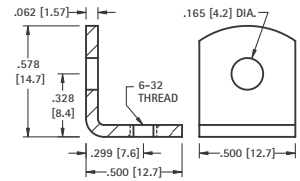
### 6-32 THREAD



**MATERIAL:**  
.062 (1.57) thick Steel,  
Nickel Plate

**CAT. NO. 708**

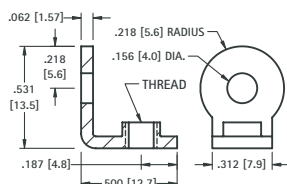
### 6-32 THREAD



**MATERIAL:**  
.062 (1.57) thick Steel,  
Tin Plate

**CAT. NO. 617**

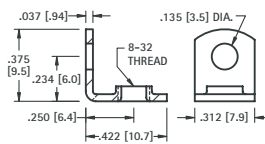
### 6-32 or 8-32 THREAD



**MATERIAL:**  
.062 (1.57) thick Brass,  
Nickel Plate

CAT. NO.	THREAD
4332	6-32
4333	8-32

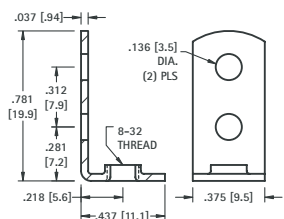
### 8-32 THREAD



**MATERIAL:**  
.037 (.94) thick Brass,  
Tin Plate

**CAT. NO. 611**

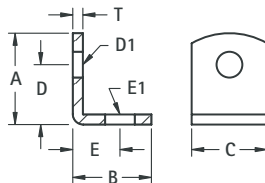
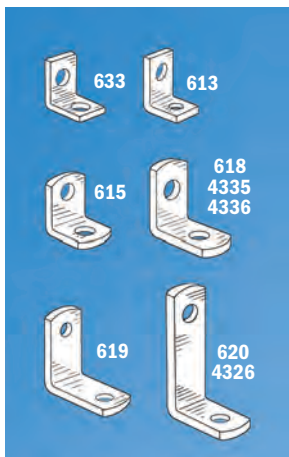
### 8-32 THREAD



**MATERIAL:**  
.037 (.94) thick Steel,  
Tin Plate

**CAT. NO. 631**

# UNIVERSAL CLEAR HOLE BRACKETS



CAT. NO.	A	B	C	D	D HOLE DIAMETER	E	E HOLE DIAMETER	T	MATERIAL	FINISH
633	.375 (9.5)	.375 (9.5)	.281 (7.1)	.218 (5.5)	.140 (3.6)	.218 (5.5)	.140 (3.6)	.032 (.81)	Brass	Nickel
613	.390 (9.9)	.453 (11.5)	.375 (9.5)	.234 (5.9)	.147 (3.7)	.299 (7.6)	.128 (3.3)	.032 (.81)	Brass	Nickel
615	.420 (10.7)	.343 (8.7)	.281 (7.1)	.281 (7.1)	.144 (3.7)	.203 (5.2)	.128 (3.3)	.032 (.81)	Brass	Tin
4335	.562 (14.3)	.562 (14.3)	.500 (12.7)	.412 (10.5)	.120 (3.0)	.411 (10.4)	.120 (3.0)	.062 (1.57)	Steel	Nickel
4336	.562 (14.3)	.562 (14.3)	.500 (12.7)	.412 (10.5)	.144 (3.7)	.412 (10.5)	.144 (3.7)	.062 (1.57)	Steel	Nickel
618	.628 (16.0)	.628 (16.0)	.375 (9.5)	.378 (9.6)	.169 (4.3)	.378 (9.6)	.169 (4.3)	.050 (1.27)	Brass	Tin
619	.687 (17.4)	.687 (17.4)	.375 (9.5)	.500 (12.7)	.144 (3.7)	.500 (12.7)	.144 (3.7)	.032 (.81)	Steel	Tin
4326	1.013 (25.7)	.487 (12.4)	.312 (7.9)	.816 (20.7)	.140 (3.6)	.332 (8.4)	.140 (3.6)	.050 (1.27)	Steel	Nickel
620	1.156 (29.4)	.656 (16.7)	.375 (9.5)	.906 (23.0)	.169 (4.3)	.420 (10.7)	.169 (4.3)	.032 (.81)	Steel	Tin

## BOARD BRACKETS

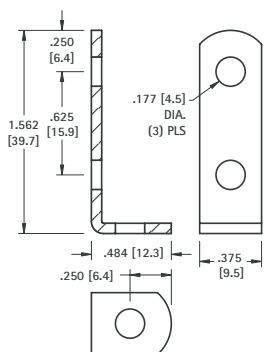
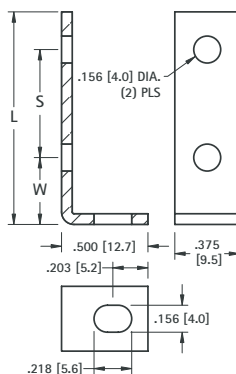
Originally designed for our line of standardized terminal boards; these brackets can also be used in other applications.

### Choice of Steel or Aluminum

#### MATERIALS:

.062 (1.57) thick Steel, Nickel Plate  
.062 (1.57) thick Aluminum

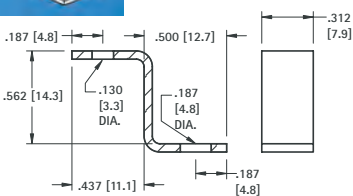
STEEL CAT. NO.	ALUMINUM CAT. NO.	W	L	S	For Use With Board No.'s (Refer to page 130)		
1556	622	.375 (9.5)	1.625 (41.3)	1.000 (25.4)	15032	15072	15092
1567	623	.375 (9.5)	2.125 (54.0)	1.500 (38.1)	15033	15073	15093
1568	624	.375 (9.5)	2.625 (66.7)	2.000 (50.8)	15034	15074	15094
1569	625	.375 (9.5)	3.125 (79.4)	2.500 (63.5)	15035	15075	15095
1570	626	.281 (7.1)	1.187 (30.1)	.750 (19.1)	15022	15024	15030
1571	627	.281 (7.1)	1.625 (41.3)	1.187 (30.1)	15036	15076	15096



CAT. NO. 1564

#### MATERIAL:

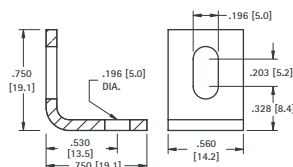
.062 (1.57) thick Steel, Nickel Plate



CAT. NO. 4325

#### MATERIAL:

.050 (1.27) thick Steel, Nickel Plate



CAT. NO. 4337

#### MATERIAL:

.080 (2.03) thick Aluminum

## THREADED PC MOUNT BRACKETS

- Snaps in for wave soldering
- Reduces assembly time
- Easily mount into predrilled or punched holes
- Stable no rock design

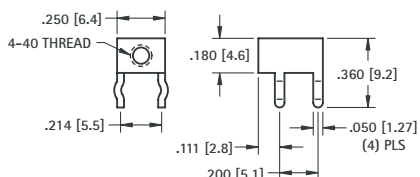


### SNAP-IN PC MOUNT

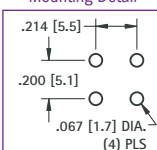


For screw selection refer to pages 79 and 123

#### 4-40 THREAD



#### Mounting Detail

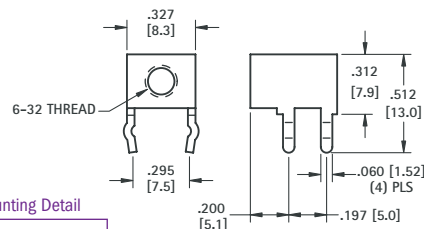


#### MATERIAL:

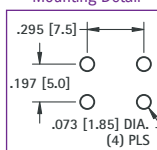
.032 (.81) thick Brass, Tin Plate

CAT. NO. 7774

#### 6-32 THREAD



#### Mounting Detail



#### MATERIAL:

.032 (.81) thick Brass, Tin Plate

CAT. NO. 7779